

**UC Merced**

**Journal of California and Great Basin Anthropology**

**Title**

Front Cover

**Permalink**

<https://escholarship.org/uc/item/79q5k054>

**Journal**

Journal of California and Great Basin Anthropology, 22(1)

**ISSN**

0191-3557

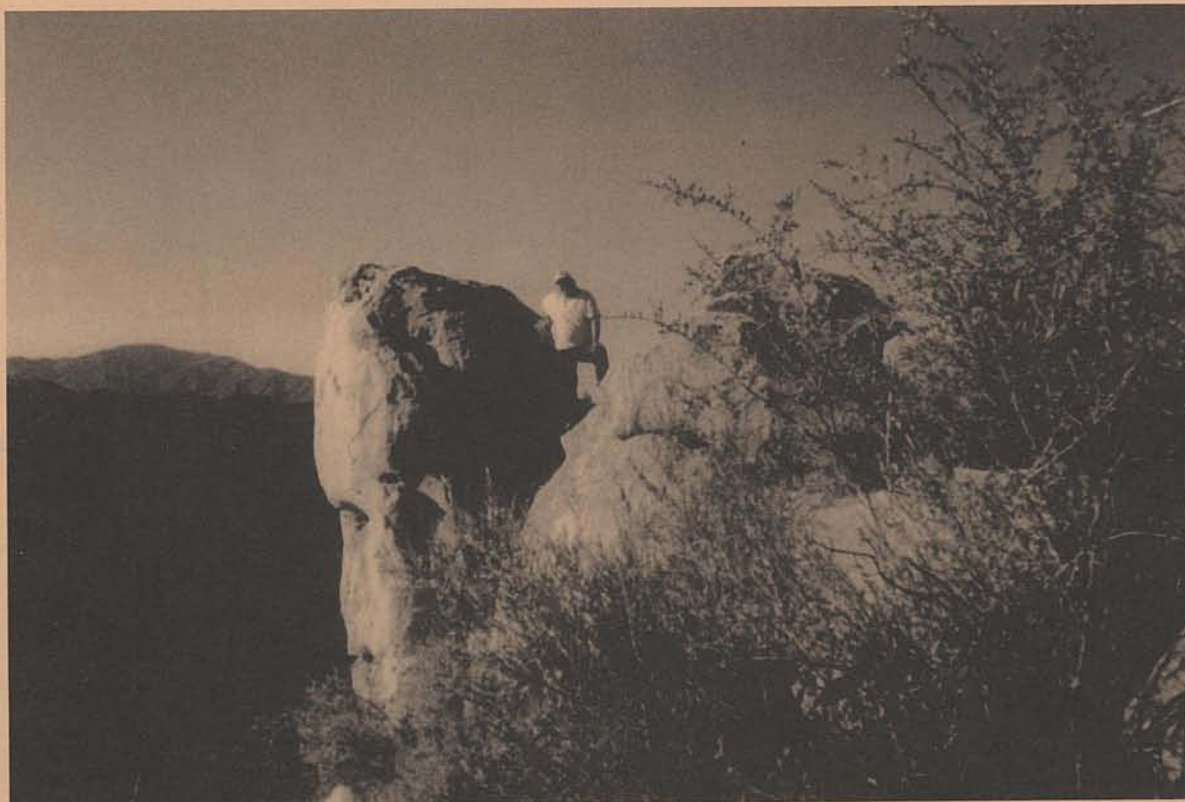
**Publication Date**

2000-07-01

Peer reviewed

**Journal of  
California and Great Basin  
Anthropology**

**Vol. 22, No. 1, 2000**



**ISSN 0191-3557**

# JOURNAL OF CALIFORNIA AND GREAT BASIN ANTHROPOLOGY

ISSN 0191-3557

*Coeditors:*

**MARK Q. SUTTON**, Dept. of Sociology and Anthropology, California State Univ., Bakersfield, CA 93311.  
**JILL K. GARDNER**, Dept. of Anthropology and Ethnic Studies, Univ. of Nevada, Las Vegas, NV 89154.

*Associate Editors:*

**CATHERINE S. FOWLER**, Univ. of Nevada, Reno; **MICHAEL GLASSOW**, Univ. of California, Santa Barbara; and **JOEL JANETSKI**, Brigham Young Univ.

*Board of Editors:*

**C. MELVIN AIKENS**, Univ. of Oregon; **LOWELL JOHN BEAN**, California State Univ., Hayward; **CATHERINE S. FOWLER**, Univ. of Nevada, Reno; **DON D. FOWLER**, Univ. of Nevada, Reno; **DAVID A. FREDRICKSON**, Sonoma State Univ.; **MARGARET LANGDON**, Univ. of California, San Diego; **KATHERINE SIVA SAUBEL**, Malki Museum; **ERNEST H. SIVA**, Banning, CA.

*Reviews Editors:*

*California:* **GLENN J. FARRIS**, 2425 Elendil Lane, Davis, CA 95616.

*Great Basin:* **CHARLOTTE BECK**, Dept. of Anthropology, Hamilton College, Clinton, NY 13323.

*Circulation Manager:*

**JILL K. GARDNER**, Dept. of Anthropology and Ethnic Studies, Univ. of Nevada, Las Vegas, NV 89154.

The *Journal of California and Great Basin Anthropology* (ISSN 0191-3557) is published twice yearly by Malki Museum, Inc., Morongo Indian Reservation, Banning, CA, under auspices of the Malki Museum Press Editorial Board, and in cooperation with the Department of Sociology and Anthropology, California State University, Bakersfield, and the Department of Anthropology and Ethnic Studies, University of Nevada, Las Vegas, where the editorial offices are located. The publisher, Malki Museum, Inc., is a nonprofit educational institution incorporated by the State of California. Opinions expressed herein are those of the authors and not necessarily those of the editors or the Malki Museum Press Editorial Board.

The *Journal of California and Great Basin Anthropology* gratefully acknowledges support from the College of Arts and Sciences and the Department of Sociology and Anthropology, California State University, Bakersfield, and the Department of Anthropology and Ethnic Studies, University of Nevada, Las Vegas.

Copyright © 2000, Malki Museum, Inc.

Printed in the United States of America

*Malki Museum Press Editorial Board:*

Katherine Siva Saubel, Chairman (President of Malki Museum, Inc.); Harry W. Lawton, Editorial and Managing Director; Lowell John Bean; Thomas Blackburn; William Bright; Margaret Langdon; Michael K. Lerch; Robert Levi; Richard Logan; William Mason; Pamela Munro; Ernest H. Siva; and Sylvia Vane.

**Address all correspondence to:**

*Journal of California and Great Basin Anthropology*  
**Department of Sociology and Anthropology**  
**California State University, Bakersfield**  
**9001 Stockdale Highway**  
**Bakersfield, CA 93311**