

# UCSF

## UC San Francisco Previously Published Works

### Title

Exposure to ambient air pollution and early childhood behavior: A longitudinal cohort study

### Permalink

<https://escholarship.org/uc/item/4zt6x56p>

### Authors

Loftus, Christine T

Ni, Yu

Szpiro, Adam A

et al.

### Publication Date

2020-04-01

### DOI

10.1016/j.envres.2019.109075

Peer reviewed



Published in final edited form as:

*Environ Res.* 2020 April ; 183: 109075. doi:10.1016/j.envres.2019.109075.

## Exposure to ambient air pollution and early childhood behavior: A longitudinal cohort study

Christine T. Loftus<sup>a,\*</sup>, Yu Ni<sup>b</sup>, Adam A. Szpiro<sup>c</sup>, Marnie F. Hazlehurst<sup>b</sup>, Frances A. Tylavsky<sup>d</sup>,  
Nicole R. Bush<sup>e,f</sup>, Sheela Sathyanarayana<sup>a,g,i</sup>, Kecia N. Carroll<sup>h</sup>, Michael Young<sup>a</sup>, Catherine  
J. Karr<sup>a,b,i</sup>, Kaja Z. LeWinn<sup>e</sup>

<sup>a</sup>Department of Environmental and Occupational Health Sciences, 4225 Roosevelt Way NE,  
University of Washington (UW), Seattle, WA, 95105, USA

<sup>b</sup>Department of Epidemiology, 1959 NE Pacific Street, Box 357236, UW, Seattle, WA, 98195,  
USA

<sup>c</sup>Department of Biostatistics, UW, Box 357232, Seattle, WA, 98195, USA

<sup>d</sup>Department of Biostatistics and Epidemiology, 462 Doctors Office Building, 66 N Pauline St,  
University of Tennessee Health Science Center, Memphis, TN, 38163, USA

<sup>e</sup>Department of Psychiatry, University of California (UC), 401 Parnassus Ave, San Francisco, CA,  
94143, USA

<sup>f</sup>Department of Pediatrics, 550 16th Street, Box 0110, UC, San Francisco, CA, 94143, USA

<sup>g</sup>Seattle Children's Research Institute, 1900 9th Ave, Seattle, WA, 98101, USA

<sup>h</sup>Division of General Pediatrics, 2200 Children's Way, Vanderbilt University Medical Center,  
Nashville, TN, 27232, USA

<sup>i</sup>Department of Pediatrics, 1959 NE Pacific St, UW, Seattle, WA, 98195, USA

### Abstract

**Background:** Prenatal and early life air pollution exposure may impair healthy neurodevelopment, increasing risk of childhood behavioral disorders, but epidemiological evidence is inconsistent. Little is known about factors that determine susceptibility.

**Methods:** Participants were mother-child dyads from the CANDLE study, an ECHO PATHWAYS Consortium birth cohort set in the mid-South United States, who completed a preschool visit. We estimated prenatal and childhood exposures to nitrogen dioxide (NO<sub>2</sub>) and particulate matter less than 10 μm (PM<sub>10</sub>) at participants' residences using a national annual average universal kriging model (land-use regression with spatial smoothing). Distance to nearest major roadway was used as a proxy for traffic-related pollution. Primary outcomes were

\*Corresponding author. Department of Environmental and Occupational Health Sciences, 4225 Roosevelt Way NE, Seattle, WA, 98105, USA. cloftus@uw.edu (C.T. Loftus).

Declaration of competing interest

The authors report no conflicts of interest relevant to this article.

Appendix A. Supplementary data

Supplementary data to this article can be found online at <https://doi.org/10.1016/j.envres.2019.109075>.

children's internalizing and externalizing behavior problems. Regression models were adjusted for individual- and neighborhood-level socioeconomic measures, maternal IQ, and multiple other potential confounders. We tested for effect modification by select maternal and child characteristics.

**Results:** The analytic sample (N = 975 of 1503 enrolled) was 64% African American and 53% had a household annual income below \$35,000; child mean age was 4.3 years (SD: 0.4). Mean prenatal NO<sub>2</sub> and PM<sub>10</sub> exposures were 12.0 ppb (SD: 2.4) and 20.8 µg/m<sup>3</sup> (SD: 2.0); postnatal exposures were lower. In fully adjusted models, 2 ppb higher prenatal NO<sub>2</sub> was positively associated with externalizing behavior (6%; 95% CI: 1, 11%). Associations with postnatal exposure were stronger (8% per 2 ppb NO<sub>2</sub>; 95%CI: 0, 16%). Prenatal NO<sub>2</sub> exposure was also associated with an increased odds of clinically significant internalizing and externalizing behaviors. We found suggestive evidence that socioeconomic adversity and African American race increases susceptibility. PM<sub>10</sub> and road proximity were not associated with outcomes.

**Conclusions:** Findings showed that air pollution exposure is positively associated with child behavior problems and that African American and low SES children may be more susceptible. Importantly, associations were observed at exposures below current air quality standards.

## Keywords

Air pollution; Neurodevelopment; Pediatric health; Longitudinal cohort; Epidemiology

## 1. Introduction

While outdoor air pollution levels are decreasing in the United States, recent research has described adverse health impacts at low exposures, below current regulatory standards (Di et al., 2017; Schraufnagel et al., 2019). It is uncertain whether low levels of air pollution affect pediatric neurodevelopment, including increasing risk of adverse behavioral outcomes. In large epidemiological cohort studies, parent report is often used to measure child behavior; these measures generally assess two broad domains of behavior: internalizing behaviors (e.g. depression, anxiety, and social withdrawal) and externalizing behaviors (e.g. aggression, attention problems, impulsivity). Children exhibiting early-onset behavior problems are at increased risk for behavior problems in adolescence and delinquency, substance abuse, violent behavior, academic problems, and depression over the life course (Moffitt, 1993; Hofstra et al., 2000; Shaw et al., 2003; Petty et al., 2008; Althoff et al., 2010). Therefore, the identification of modifiable, environmental exposures associated with childhood behavior problems has important implications for public health prevention and intervention efforts.

The collective epidemiological evidence linking prenatal and early-life air pollution exposure to child behavior outcomes is growing, and toxicological research suggests several plausible mechanisms by which prenatal or early-life air pollution exposure could harm the developing brain, including by increased systematic and neuroinflammation, oxidative stress, and microglial activation (Block et al., 2012; Suades-Gonzales et al., 2015). However, there are some inconsistencies in epidemiological studies. Several studies have described adverse associations between prenatal or early childhood air pollution and externalizing behavior problems (Yorifuji et al., 2017; Newman et al., 2013; Perera et al., 2014;

Alemanly et al., 2018), self-regulation (Harris et al., 2016; Margolis et al., 2016), diagnosis of attention deficit/hyperactivity disorder (ADHD)<sup>1</sup> (Siddique et al., 2011), and reduced performance on direct assessments of attention or working memory (Chiu et al., 2013, 2016; Sentís et al., 2017; Wang et al., 2009; Rivas et al., 2019; Forns et al., 2017), which are cognitive skills that underlie externalizing problems and ADHD. At the same time, recent longitudinal cohort studies provide compelling evidence of null associations between air pollution and risk of ADHD (Forns et al., 2018; Gong et al., 2014). Fewer studies have assessed associations between air pollution and pediatric internalizing behaviors or associated disorders such as depression or anxiety (Perera et al., 2012, 2014).

There are several possible explanations for inconsistencies across prior studies. Socioeconomic status (SES) is a strong determinant of pediatric neurodevelopmental outcomes as well as ambient air pollution exposure (Mikati et al., 2018; Clark et al., 2014; Hajat et al., 2015; Temam et al., 2017), and, when not adequately accounted for, may confound associations. There are notable differences with respect to adjustment for SES, with many studies including maternal education as the sole SES covariate. Further, it is difficult to disentangle direct effects of traffic-related air pollutants on neurodevelopment from those attributable to other co-exposures that are correlated with roadway proximity, such as noise, which can impact child sleep quality and, in turn, behavior (Basner and McGuire, 2018; Gregory et al., 2004; Zare Sakhvidi et al., 2018). Exposure measurement error affects all epidemiological studies of air pollution and can be a source of substantial bias. Analyses that utilize area-wide estimates of ambient pollutants or that rely on limited address history data (Yorifuji et al., 2016, 2017; Haynes et al., 2011; Min and Min, 2017; Midouhas et al., 2019) may be more susceptible to such biases. Furthermore, research suggests that certain factors increase susceptibility to neurotoxic effects of air pollution, such as child sex, SES and maternal nutrition, but existing evidence is inconclusive. Previous work has attempted to determine windows of susceptibility as well, but uncertainty persists as to timing of exposure most important for health effects.

In the current study, we examine the association between air pollution and child externalizing and internalizing behaviors in the Conditions Affecting Neurocognitive Development and Learning in Early Childhood (CANDLE) study, a longitudinal study of 1503 mother-child dyads in Shelby County, TN. We leverage CANDLE's prospective design, large sample size, high retention rates, and rich characterization of address histories as well as participant characteristics to help overcome some limitations of some previous studies. We examine effect modification by child characteristics associated with greater vulnerability to chemical exposures in prior studies (child sex, race and SES), as well as by an objective biomarker of prenatal nutrition, maternal plasma folate, which we have found to modify air pollution-neurodevelopment associations in prior studies of this cohort (Loftus

---

<sup>1</sup>ADHD – Attention Deficit Disorder; BSI – Brief Symptom Inventory; CANDLE - Conditions Affecting Neurocognitive Development and Learning in Early Childhood; CBCL – Child Behavior Checklist; CI – Confidence Intervals; COI – Childhood Opportunity Index; CSHQ – Children's Sleep Habits Questionnaire; ECHO – Environmental Influences on Child Health Outcomes; EPA – Environmental Protection Agency; HOME – Home Observation Measurement of the Environment; IQ – Intelligence Quotient; IQR – Interquartile Range; IRB – Institutional Review Board; KIDI – Knowledge of Infant Development Inventory; NO<sub>2</sub> – Nitrogen Dioxide; OR – Odds Ratio; PM – Particulate Matter; PM<sub>10</sub> – Particulate Matter of 10 µm or Less in Aerodynamic Diameter; PM<sub>2.5</sub> – Particulate Matter of 2.5 µm or Less in Aerodynamic Diameter; SD – Standard Deviation; SES – Socioeconomic Status; TN – Tennessee; US – United States; WASI – Weschler Abbreviated Scale of Intelligence.

et al., 2019). We hypothesized that higher exposure to ambient air pollution in the prenatal and/or postnatal period are associated with more behavioral problems in early childhood. We further aimed to determine whether prenatal or postnatal exposures are more strongly associated with neurodevelopmental outcomes.

## 2. Methods

### 2.1. The CANDLE study: cohort and data collection

The CANDLE study is a prospective pregnancy cohort study set in Shelby County, TN. The design, aims and data collection have been described previously (Sontag-Padilla et al., 2015; Loftus et al., 2019). Between 2006 and 2011, CANDLE recruited women based on the following criteria: age 16–40 years old, in the second trimester of a singleton pregnancy, intent to deliver at one of five health care settings in Shelby County, and with no pregnancy complications (e.g. diagnosis of gestational diabetes, high blood pressure or other condition). 5228 women were screened and 3320 were determined to be eligible; of these, 1503 enrolled in CANDLE (Sontag-Padilla et al., 2015). Longitudinal data collection included two prenatal clinic visits, several childhood visits attended by children and mothers, as well as two home visits in early childhood. Mothers were contacted by phone one or more times per year for purposes of cohort engagement and survey-based data. All participants provided informed consent. Research activities were approved by the University of Tennessee Health Sciences Center Institutional Review Board (IRB). The current analyses were conducted as part of the PATHWAYS Consortium, a cohort award of the Environmental Influences on Child Health Outcomes (ECHO) initiative, and were approved by the IRB of the University of Washington, Seattle.

### 2.2. Neurodevelopmental outcomes

Outcomes were assessed at a preschool-age study visit. Mothers completed the Child Behavior Checklist (CBCL; ages 1.5–5 years of age), a well-researched instrument demonstrating high reliability (Achenbach and Rescorla, 2000; Achenbach and Ruffle, 2000; Achenbach, 2009). In brief, the CBCL is a parent reported measure of the frequency (never, sometimes, always) of 99 problem behaviors in the past two weeks. Responses are summed to create eight syndrome and DSM-oriented scales as well as two broadband domains of behavior: externalizing and internalizing, which are the focus of this investigation.

Two primary outcome measures were selected *a priori*: raw scores for both the CBCL externalizing and internalizing broadband scales. Secondary outcomes were externalizing and internalizing scores exceeding clinical thresholds (t-scores of 63 or higher).

### 2.3. Air pollution exposure

CANDLE collected maternal residential addresses at enrollment and updated contact information at every subsequent point of contact, including study visits and phone calls. Addresses were geocoded using Census TIGER line files in ArcGIS, Texas A&M geocoder, or manual matching. When a move date was not available, it was estimated as halfway between the ascertainment dates of the two different addresses.

To estimate ambient NO<sub>2</sub> and PM<sub>10</sub> at every residential location, we applied validated universal kriging models (land-use regression with spatial smoothing) for the contiguous US; details in Sampson et al. (2013) and Young et al. (2016). These models predict annual average pollutant concentrations based on air quality monitoring data from AQS and IMPROVE networks and modeling of over 300 geographic covariates. The NO<sub>2</sub> model was also enhanced with satellite data (Young et al., 2016). The predictive capacity of models were assessed with cross-validation R<sup>2</sup>s, which ranged from 0.79 to 0.89 and 0.40 to 0.63 for NO<sub>2</sub> and PM<sub>10</sub>, respectively. To leverage spatial contrasts in air pollution and avoid temporal confounding or bias due to year-specific modeling errors, we used a “fixed year” of the model to determine participant exposures within each exposure window: specifically, we estimated prenatal exposures using annual averages predicted using the 2006 model, and all postnatal estimates were derived from the 2011 model. We accounted for changes of address during the prenatal and postnatal periods: for participants who moved during an exposure period (i.e., prenatal or postnatal period), we calculated time-weighted exposure averages across all locations during that window.

As a proxy measure of air pollution associated with road traffic, we estimated distance between each residential address and nearest major roadway. We defined “near road” as living within 150 m of an A1, A2 or A3 road (US Census Feature Class Codes) for our primary metric. If a participant lived at multiple addresses during the exposure period, we assigned road proximity based on the single location at which the mother lived the longest.

#### 2.4. Other variables

Covariates included in statistical models as potential confounders, precision variables, and effect modifiers were collected by a variety of methods. Baseline socio-demographics, health behaviors, pre-pregnancy body mass index (BMI), parity and breastfeeding were ascertained by maternal surveys. Reported household income was adjusted by the number of adults and children supported by the income (Hagenaars and de Vos and Zaidi, 1994). Prenatal surveys included the Brief Symptom Inventory (BSI) (Derogatis, 1993) for assessment of maternal mental health and the Knowledge of Infant Development Inventory (KIDI; MacPhee, 1981). Child sleep quality was measured by maternal report on the Children’s Sleep Habits Questionnaire (CSHQ) at the age 4–6 year visit (Owens et al., 2000). Maternal IQ was assessed using the WASI short form (Axelrod, 2002). Maternal blood was collected during the second trimester of pregnancy, and plasma folate concentrations were measured as described previously (Roy et al., 2018). The Home Observation Measurement of the Environment (HOME) inventory, an in-person observational measure of the quality of care-taking environment (Frankenburg and Coons, 1986), was completed during a visit to CANDLE participants’ homes.

Finally, we used two domains of the Childhood Opportunity Index (COI) to approximate neighborhood-level resources and other local factors that influence child development: the *educational opportunity* subscale, calculated using adult educational attainment rate (college and above), school poverty rate, reading proficiency rate, math proficiency rate, preschool/nursery school attendance rate, high school graduation rate, proximity to accredited early

education centers, and proximity to early childhood education centers of any type; and the *social and economic opportunity* subscale, calculated using neighborhood foreclosure rate, poverty rate, unemployment rate, public assistance rate, and proximity to employment. COI indices are estimated at the census tract level. Due to alignment with data collection years for the COI, we estimated the postnatal average COI subscales with time-weighted averaging over all postnatal addresses.

## 2.5. Statistical analyses

We completed descriptive analyses to characterize the study population overall, to compare characteristics between participants with high versus low prenatal air pollution exposures, and to compare characteristics of those included in analyses to all CANDLE live births. We estimated pairwise correlations between pollutant measures and continuous distances to each class of roadway.

Associations between each outcome and air pollution exposure metric were estimated in separate multivariate linear regression models. We assessed associations with prenatal as well as postnatal exposures for each pollutant separately. Because CBCL externalizing and internalizing raw scores are summed counts of behaviors, we used Poisson regression with robust standard errors to account for over-dispersion. Associations with dichotomous outcomes (i.e., externalizing or internalizing scores above a clinical threshold) were estimated using logistic regression. NO<sub>2</sub> and PM<sub>10</sub> risk estimates were scaled to a 2 unit increase in exposure, which approximated the IQR for both pollutants in pre- and postnatal windows in this study population.

We used a staged approach to address potential confounding. We first identified risk factors for pediatric behavioral problems in the research literature and used a directional acyclic diagram (DAG) to inspect possible pathways for confounding (Supplemental Fig. 1). Our primary results are based on the “full” model, which includes all covariates identified *a priori* as likely confounders as well as risk factors for poor behavioral outcomes that may be correlated with exposures in this population. The “minimal” and “minimal plus temporal splines” are included to provide insight into the importance of confounder adjustment in this analysis and to help in assessing whether including all of the covariates in the “full” model results in inflated confidence intervals. The “expanded” model is included to assess whether more robust adjustment for additional covariates might be necessary.

Minimal models were adjusted for child sex, age at assessment, and enrollment site; in “minimal plus temporal splines” models, we added child date of birth as cubic splines with four degrees of freedom per year. The full models included individual-level SES variables (maternal education at baseline [high school degree/GED or less, college degree or technical school, graduate or professional degree], and baseline household income adjusted for number of adults and children in household), neighborhood-level economic and educational opportunity (COI economic and educational subscale scores, as splines with three degrees of freedom), maternal demographics (maternal age [16–18, 19–21, 22–29, and 30 and over years] and maternal race [African American or other]), maternal health during pregnancy (reported smoking [any or none]), maternal prenatal depression (BSI t-score for depression above 60), maternal cognitive ability (full scale IQ score), birth order (first



child or not), and early childhood nutrition and child health behaviors (breastfeeding [never, <6 months, 6 months], and sleep survey score at time of assessment). Sleep health was included as a covariate to block a possible association between air pollution exposure and neurodevelopment that may appear due to the effects of traffic noise on sleep and – in turn – child behavior. Our aims are to estimate associations with exposure to chemical air pollution and child behavior, not the effects of noise or other effects of living near roads. Expanded models included all covariates in the full models, plus additional variables to minimize the possibility of residual confounding: baseline insurance status (Medicaid/no insurance, or other), reported prenatal vitamin use (yes or no), maternal marital status at baseline, paternal education at baseline (same categories as maternal education, plus unknown), maternal pre-pregnancy body mass index (underweight, normal, overweight, obese), and total score on the KIDI survey. As noted above, we estimated effects of prenatal and postnatal separately as well as in mutually-adjusted models. We used the same models to evaluate both prenatal and postnatal exposure for ease of comparing results for different exposure windows.

We assessed evidence of effect modification in associations between air pollution and primary outcome measures (continuous CBCL scores) by child sex, individual-level SES, and maternal race. In separate analyses, we modeled individual SES 1) by adjusted household income, dichotomized at the median as well as a continuous value, and 2) by baseline insurance status: covered by private insurance (relatively high SES) vs. Medicaid/Medicare or no insurance (relatively low SES). We also evaluated effect modification by a biomarker of prenatal nutrition, plasma folate. Prenatal plasma folate was divided into quartiles based on the distribution among CANDLE mothers. We added interaction terms in all models used to assess effect modification, and p-values for interaction were estimated using Wald tests with robust standard errors.

We conducted sensitivity analyses to evaluate potential biases in the main findings: 1) To assess residual confounding by the home environment, we additionally controlled associations with primary outcomes, estimated in full models, for the HOME inventory. On account of substantial nondifferential missingness in this measure, we use multiple imputation to impute missing HOME scores in  $N = 10$  datasets, which were combined in regression analyses using Rubin's rules (Rubin, 2004). 2) To determine whether our findings about road proximity were influenced by the threshold chosen to define "near roadway," we tested additional distance thresholds: 100, 200, 250, 300, 350, and 400 m. 3) As described above, we excluded participants who moved outside the study area during pregnancy in analyses of prenatal exposure and those who moved away between birth and time of assessment in analyses of postnatal exposure. In sensitivity analyses, we further repeated analyses of prenatal exposure with exclusion of the participants who moved out of the area in the postnatal period. 4) We repeated main analyses of each exposure with additional control for the two other exposures in the same time window, in attempt to assess whether associations with each were affected by confounding by another exposure. 5) Finally, we explored whether the exposure-response relationships for main models deviated from linearity by using generalized linear models (GAMs) with adjustment for all covariates in the full models. We inspected exposure-response curves and associated 95% CIs to determine whether there is statistically significant evidence of deviations from linearity.



All analyses were conducted in Stata version 15 (StataCorp LLC, College Station, Texas) or R 3.4.3 (R Foundation for Statistical Computing, Vienna, Austria). We considered 0.05 as a p-value threshold for statistical significance.

### 3. Results

#### 3.1. Study population

The study population included  $N = 975$  mother-child dyads who had prenatal address histories available for air pollution predictions and outcome data from the 4–6 year visit. Fig. 1 illustrates cohort retention from enrollment to the time of outcome assessments and exclusions from the current analysis. Compared to those who enrolled in CANDLE and had a live birth ( $N = 1452$ ), our study population was similar in prenatal exposures as well as participant characteristics (Supplemental Table 1).

64% of mothers identified as African American and 29% as Caucasian. The majority were covered by Medicaid/Medicare or had no insurance (57%) and reported a high school education or less at time of enrollment (60%) (Table 1). 38% of mothers were married at enrollment. Few mothers reported prenatal smoking (9%), and the majority breastfed their children for less than 6 months or not at all (65%). The mean (SD) child age was 4.3 (0.4) years at the time of outcome assessment. Compared to those with lower levels of prenatal pollution exposure, mothers with higher exposure to at least one pollutant measure were more likely African American, were younger during pregnancy, had lower levels of educational attainment, were less likely to be married, were less likely covered by private insurance, had lower reported incomes at enrollment and lived in census tracts with lower COI educational and social and economic opportunity scores (Table 1).

#### 3.2. Behavioral outcomes

Externalizing behavior raw scores ranged from 0 to 43; the mean (SD) was 9.3 (7.6). Internalizing behavior raw scores ranged from 0 to 44; the mean (SD) was 6.3 (6.2). 4.7% and 5.3% of children had t-scores above the clinical threshold of 63 for externalizing and internalizing problem behavior scores, respectively.

#### 3.3. Modeled pollutant exposures and road proximity

Median prenatal exposures to  $PM_{10}$  and  $NO_2$  were  $20.7 \mu\text{g}/\text{m}^3$  (IQR = 2.8) and 11.9 ppb (IQR = 3.8), respectively, and median postnatal exposures were  $17.2 \mu\text{g}/\text{m}^3$  (IQR = 2.1) and 8.6 ppb (IQR = 2.5), respectively (Table 2).  $N = 272$  (27.9%) and 262 (27.1%) of participants lived within 150 m of a busy road for the majority of their pregnancy and during childhood, respectively.  $NO_2$  and  $PM_{10}$  had low correlations in both the prenatal and postnatal windows of exposures (Pearson's  $r = -0.057$  and 0.049, respectively; Supplemental Table 2).  $NO_2$  concentrations and distance to roadways were correlated, as expected, while  $PM_{10}$  estimates were not related to roadway proximity. Postnatal  $NO_2$  and  $PM_{10}$  were strongly correlated with prenatal exposures ( $r = 0.79$  and 0.71 for  $NO_2$  and  $PM_{10}$ , respectively).

Supplemental Fig. 2 displays predicted annual concentrations of NO<sub>2</sub> and PM<sub>10</sub> in the study region. Estimated NO<sub>2</sub> levels were highest around major roadways and concentrated in the Memphis urban center, while regions of high PM<sub>10</sub> were dispersed across the study region.

### 3.4. Air pollution and externalizing behavior

In fully-adjusted models, children exposed to 2 ppb higher prenatal NO<sub>2</sub> on average had 6% higher externalizing behavior scores (95% CI: 1, 11%; Fig. 2). 2 ppb higher postnatal NO<sub>2</sub> was associated with 8% higher externalizing scores (95% CI: 0, 16%). NO<sub>2</sub> was also associated with a higher odds of meeting the threshold for clinically significant externalizing problems (OR<sub>prenatal</sub> = 1.57 [95% CI: 1.02, 2.40]; OR<sub>postnatal</sub> = 1.96 [95% CI: 1.03, 3.71]) (Table 3). With additional control of HOME inventory score in imputed datasets, findings did not change (results not shown). Mutual adjustment of prenatal and postnatal NO<sub>2</sub> in the same model resulted in attenuation and reduced precision of effect estimates associated with both exposure windows (4% increase [95% CI: -3, 11%] and 2% increase [95% CI: -9, 14%] for prenatal and postnatal, respectively, with mutual adjustment). We found no associations between prenatal or postnatal PM<sub>10</sub> or road proximity and any externalizing outcome (Fig. 2; Table 3).

There is some evidence that SES modified the association between air pollution and externalizing behavior (Fig. 3). Associations between postnatal NO<sub>2</sub> and externalizing behavior were stronger for those with Medicaid or no insurance at baseline compared to those with private insurance (12% increase [95% CI: 1, 24%] vs. 1% increase [95% CI: -10, 13%];  $p_{\text{interaction}} = 0.09$ ). Higher PM<sub>10</sub> was associated with more externalizing behavioral problems in children from lower income families but not those with higher incomes (11% increase [95% CI: 0, 25%] vs. 10% decrease [95% CI: -1, 19%] per 2 g/m<sup>3</sup>,  $p_{\text{interaction}} = 0.01$ ), respectively; findings were similar when income was modeled as a continuous interaction term (results not shown). For both pre- and postnatal NO<sub>2</sub> and PM<sub>10</sub>, we observed suggestive trends of stronger associations with lower maternal folate during pregnancy, but tests of interaction did not achieve statistical significance (Fig. 3). There was no evidence of effect modification by child sex or maternal race (Fig. 3).

### 3.5. Air pollution and internalizing behavior

Measures of pre- and postnatal air pollution were not associated with internalizing behaviors in the full population (Fig. 2). However, we did observe evidence of effect modification of postnatal NO<sub>2</sub> exposure by participant characteristics for this outcome (Fig. 3). Children of African American mothers exhibited stronger positive associations between internalizing scores and postnatal NO<sub>2</sub> compared to other races (11% higher [95% CI: 0, 24%] versus a difference of -3.9% [95% CI: -17, 12%] per 2 ppb increase;  $p_{\text{interaction}} = 0.10$ ). For participants on Medicaid or with no insurance at enrollment, 2 ppb higher postnatal NO<sub>2</sub> was associated with 13% higher (95% CI: 1, 27%) internalizing behavior scores, while there was no association among those with private insurance (a difference of -5% [95% CI: -16, 7%] per 2 ppb higher NO<sub>2</sub>;  $p_{\text{interaction}} = 0.027$ ). There was little evidence that maternal race, child sex or prenatal folate status affected associations between air pollution and internalizing behavior.

### 3.6. Sensitivity analyses

In road proximity sensitivity analyses, externalizing scores were significantly higher when larger distance thresholds were used to define proximity to major roadways (300 m and above; Supplemental Table 3). For example, externalizing scores were 13% higher (95% CI: 2, 25%) with prenatal residential locations within 300 m of a busy road; postnatal associations were similar for this threshold (Supplemental Table 3).

Exclusions of participants that moved out of the study region in the postnatal period in the analyses of prenatal exposures did not affect any the findings (results not shown). We explored whether positive associations between NO<sub>2</sub> and externalizing behavior observed in linear regression models exhibited signs of nonlinearity using GAM plots, but we detected no statistically significant deviations from linearity (results not shown). Finally, we repeated main models for each exposure with additional control for the other two exposures, and observed no meaningful difference in the findings (Supplemental Table 4).

## 4. Discussion

We found that prenatal and childhood exposure to higher levels of outdoor air pollution were associated with poorer behavioral outcomes in early childhood in the CANDLE cohort, a large, well-characterized, and diverse birth cohort in the southern US. The most consistent associations were between NO<sub>2</sub>, a marker of traffic-related pollutants, and maternal report of children's externalizing behavior problems. Higher NO<sub>2</sub> exposure was associated with greater levels of externalizing behaviors as well as increased odds of externalizing scores exceeding clinical thresholds. There was suggestive evidence that these associations were stronger for children in lower SES families. We did not observe any effects of air pollution on internalizing behaviors in the overall population but did find that lower SES and African American children may be more susceptible to pre- or postnatal air pollution exposure with respect to internalizing behaviors.

These findings add to a growing body of epidemiological evidence connecting externalizing behaviors or related disorders with pre- and postnatal exposure to air pollutants (Yorifuji et al., 2017; Perera et al., 2014; Newman et al., 2013; Forns et al., 2016; Alemany et al., 2018; Younan et al., 2018; Roberts et al., 2019; Siddique et al., 2011; Min and Min, 2017). Other work suggests that air pollution exposure may impair specific neurological functions underlying behavioral regulation (Chiu et al., 2016; Harris et al., 2016; Wang et al., 2009; Rivas et al., 2019; Sentís et al., 2017). At the same time, others have reported null or protective associations with externalizing behaviors or related disorders (Abid et al., 2014; Forns et al., 2018; Gong et al., 2014). Our study strengthens collective evidence for an effect of air pollution on behavioral development by addressing some limitations in previous work. CANDLE is a large, prospective prenatal cohort study with rich longitudinal data collection on predictors of pediatric neurodevelopment. Our exposure assessment included spatially-resolved air pollution exposures calculated using validated national models. The CANDLE study collected detailed address histories, including precise dates for most changes of address, which allowed us to estimate more accurate exposures than studies that did not track moves. This level of detail increased our ability to characterize pre-versus postnatal exposure and attempt to describe associations specific to different windows of exposure.

Compared to other pregnancy cohorts, the CANDLE cohort has high longitudinal retention and, moreover, we observed little evidence of differential loss-to-follow-up.

Because individual and neighborhood SES are correlated with outdoor air pollution and predictors of child neurodevelopment and behavior, inadequate control for SES could bias associations with air pollution towards or away from the null. In our study and others set in the United States (Harris et al., 2016; Newman et al., 2013) lower SES predicts higher air pollution exposure, while in European studies (Forns et al., 2018; Temam et al., 2017) the opposite was true. Residual confounding by SES could therefore affect observed associations differentially between study regions and contribute to between-study inconsistencies. Many studies of air pollution and pediatric neurodevelopment adjusted for only a single measure of individual-level SES (Chiu et al., 2013, 2016; Perera et al., 2014; Alemany et al., 2018; Rivas et al., 2019; Sentís et al., 2017; Younan et al., 2018; Siddique et al., 2011), and several included individual-level SES variables but not area-level SES (Min and Min, 2017; Perera et al., 2014; Newman et al., 2013; Chiu et al., 2013, 2016; Abid et al., 2014; Midouhas et al., 2019; Sentís et al., 2017; Margolis et al., 2016; Wang et al., 2009), increasing the likelihood of residual confounding (Temam et al., 2017). We controlled for several SES variables at both the individual and neighborhood levels and used staged modeling to explore the robustness of our findings to covariate selection in order to minimize the potential impact of confounding by SES. A related strength of our analysis over some existing work is that missingness of key covariates was very low; we used multiple imputation to additionally control for the HOME score, an observed measure of the home environment and important predictor of child neurodevelopment with differential missingness in this sample.

Our work also expands upon the existing literature by describing associations in a relatively large and diverse cohort that is representative of Shelby County, the most populous county in Tennessee. Previous analyses of cohorts with high proportions of lower SES families and racial/ethnic minorities have been much smaller (Chiu et al., 2013, 2016; Perera et al., 2012, 2014). In addition, our findings are notable in that ambient air pollution exposures are relatively low. Existing studies have described associations in urban regions of Europe and the US with higher air pollution exposures. Median prenatal NO<sub>2</sub> and PM<sub>10</sub> exposures in the CANDLE study population were 11.9 ppb and 20.7 µg/m<sup>3</sup>, respectively. The current US air quality standards for NO<sub>2</sub> annual averages is 53 ppb. There is no PM<sub>10</sub> annual average for comparison, but Memphis has not exceeded the PM<sub>10</sub> 24-h standard for over 20 years. If causal, the associations measured in this study indicate that health effects are occurring below current regulatory standards.

Relatively few studies have explored susceptibility to air pollution exposure across prenatal and early life stages of development. Distinguishing effects associated with specific exposure windows in observational studies is challenged by the high correlation between exposure periods. Some studies assessed both prenatal and postnatal windows of exposure separately and compared the magnitude of associations across exposure windows (Harris et al., 2016; Sentís et al., 2017; Gong et al., 2014). Others modeled both exposures in regression models concurrently (Chiu et al., 2016; Vishnevetsky et al., 2015; Edwards et al., 2010; Rivas et al., 2019) or conducted sensitivity analyses with restriction by move status

(Forns et al., 2018; Porta et al., 2016). In general, evidence from these studies is somewhat stronger for postnatal exposure but overall is inconclusive. We attempted to address this question in our large analytic sample, with excellent detail on participant locations and dates of moves. We found that point estimates for both prenatal and postnatal air pollution with behavior outcomes were similar in magnitude and precision in separate models; with mutual adjustment in the same model, both associations were attenuated and imprecise. Our results therefore are also inconclusive as to whether prenatal or postnatal exposures – or both – drive associations with neurobehavior.

We examined whether associations between prenatal air pollution and child behavior varied by child or maternal characteristics. Sex differences have been evaluated in animal models and epidemiologic studies, with several studies indicating that males are more susceptible to neurotoxic effects of air pollution (Bolton et al., 2017; Costa et al., 2017; Allen et al., 2013, 2014; Chiu et al., 2013; Wang et al., 2017; Rivas et al., 2019). Some epidemiologic studies indicated the opposite (Chiu et al., 2016; Sentís et al., 2017) or found no sex differences (Harris et al., 2016). There was no evidence of effect modification by child sex in this study population. We also assessed whether socio-demographic adversity may increase susceptibility and found that Medicaid insurance status at baseline was associated with significantly stronger associations between pre- or postnatal air pollution exposure and behavioral outcomes. These results were qualitatively similar when SES was modeled using baseline household income. Our findings are consistent with those from diverse cohorts with a large proportion of low-SES families (Vishnevetsky et al., 2015, Wang et al., 2017) and in line with hypotheses that sociodemographic adversity could convey increased susceptibility to air pollution health effects (Hooper and Kaufman, 2018). By contrast, two analyses in study populations with higher SES participants did not observe stronger adverse effects among lower SES participants (Harris et al., 2016; Newman et al., 2013), possibly due to lack of variability in SES.

We did not observe significant effect modification by maternal folate for any air pollution-behavior association, but findings were generally suggestive of a stronger association between both internalizing and externalizing problems with *postnatal* PM<sub>10</sub> and NO<sub>2</sub> exposure among those whose mothers were in the lowest quartile of plasma folate during pregnancy. In a prior study, we observed a stronger, negative association between prenatal PM<sub>10</sub> exposure and child IQ among women in the lowest quartile of folate during pregnancy (Loftus et al., 2019). In this study population, women within the lowest folate quartile had levels defined as possibly deficient by the World Health Organization (WHO, 2012). While results in the current study were inconclusive, collectively these two papers begin to suggest that adequate folate intake may be an important source of resilience to the neurotoxic effects of air pollution exposure in both the pre and post-natal period. These associations need to be tested in other populations and are an important area for future research.

Toxicological research provides evidence of several potential mechanisms by which exposure to air pollution in early life may have a lasting impact on brain development and subsequent behavior. General mechanisms by which prenatal air pollution may interfere with healthy fetal neurodevelopment include by increased placental and fetal inflammation and oxidative stress (Block et al., 2012; Costa et al., 2017) or through altered epigenetic

programming in the placenta or fetus (Peng et al., 2018). Exposure in the postnatal period may lead to deterioration of the blood-brain barrier, oxidative stress, neuroinflammation and microglial activation (Block et al., 2012; Suades-Gonzales et al., 2015). Some lines of evidence suggest that such effects increase risk of externalizing disorders specifically. Pediatric brain imaging suggests that the pre-frontal cortex, a region of the brain believed to be essential for development of behavioral regulation, may be particularly sensitive to the effects of air pollution on the developing central nervous system (Peterson et al., 2015; Pujol et al., 2016; Mortamais et al., 2017).

Our study has several strengths, as described above, but there are important limitations to note as well. The approach to exposure assessment provides limited information as to which components of air pollution drive associations with neurodevelopment, assuming that observed associations reflect a true causal effect. Associations were strongest for NO<sub>2</sub>, a marker for traffic-related air pollution, a complex mixture of numerous chemical species and particle sizes including several linked to neurotoxic effects, such as PAHs, fine and ultrafine particulates, lead, and volatile organic compounds (VOCs). Some of the most robust epidemiological evidence for developmental neurotoxicity of air pollution is linked to PAHs (Block et al., 2012; Costa et al., 2017; Vishnevetsky et al., 2015; Perera et al., 2009, 2014; Mortamais et al., 2017; Peterson et al., 2015; Margolis et al., 2016; Edwards et al., 2010), a combustion-related pollutant generated by traffic, particularly diesel vehicles, and industrial point sources in urban areas (Ravindra, 2008). The Memphis area is a major transportation hub in the mid-Atlantic region of the United States, with the busiest airport for cargo traffic, the third largest rail center, and one of the largest river ports in the country. In addition, several industries in Memphis release combustion by-products, including a coal-fired power plant and a refinery. Our future research activities will include analyses of PAH biomarkers in multiple trimesters of prenatal urine across the CANDLE cohort. We did not test associations with PM<sub>2.5</sub> due to inadequate between-participant variability in this population; this is a key limitation in light of research indicating that small particulates may be drivers of the neurotoxic potential of PM. Another limitation is that noise associated with proximity to busy traffic could be a confounder in our main analyses, and we did not have any data on ambient noise in the study region, which would have allowed us to adjust for this factor. Note that we controlled for child sleep at the time of assessment in all models, which may be sufficient to block this potential pathway of confounding. Finally, we did not account for air quality in the indoor environment, which is a limitation in light of recent studies indicating that indoor exposures may have a substantial impact on short- and long-term neurodevelopment (Forns et al., 2017; Midouhas et al., 2019).

## 5. Conclusion

In a large and diverse cohort representative of an understudied US population, we observed associations between air pollution and children's externalizing and internalizing behavior problems. Some associations were stronger among lower SES and African American families. These findings expand on existing evidence that air pollution impairs pediatric neurodevelopment; importantly, the results suggest that health effects may be occurring at exposures below current standards of the US Environmental Protection Agency (EPA). If



confirmed, national standards should be revised lower to minimize adverse impacts of air pollution on children's health and development.

## Supplementary Material

Refer to Web version on PubMed Central for supplementary material.

## Funding source

Environmental influences on Child Health Outcomes (ECHO) is a nationwide research program supported by the National Institutes of Health (NIH), Office of the Director, to enhance child health; ECHO PATHWAYS is one research center funded by this program (1UG3OD023271-01, 4UH3OD023271-03). The CANDLE study was funded by the Urban Child Institute and NIH (R01 HL109977). The air pollution models were developed under STAR research assistance agreements, No. RD831697 (MESA Air) and RD-83830001 (MESA Air Next Stage), awarded by the U.S. Environmental Protection Agency. This manuscript has not been formally reviewed by the EPA. The views expressed in this document are solely those of the authors and the EPA does not endorse any products or commercial services mentioned in this publication. This project was supported by funding from NIH P30ES007033 (PI: Joel Kaufman).

## References

- Abid Z, Roy A, Herbstman JB, Ettinger AS, 2014. Urinary polycyclic aromatic hydrocarbon metabolites and attention/deficit hyperactivity disorder, learning disability, and special education in U.S. children aged 6 to 15. *J. Environ. Public Health* 2014, 628508. 10.1155/2014/628508. Epub 2014 Jan 30. [PubMed: 24624143]
- Achenbach TM, 2009. The Achenbach System of Empirically Based Assessment (ASEBA): Development, Findings, Theory, and Applications University of Vermont Research Center for Children, Youth, & Families, Burlington, VT.
- Achenbach TM, Rescorla LA, 2000. Manual for the ASEBA Preschool Forms & Profiles University of Vermont, Research Center for Children, Youth, & Families, Burlington, VT.
- Achenbach TM, Ruffle TM, 2000. The Child Behavior Checklist and related forms for assessing behavioral/emotional problems and competencies. *Pediatr. Rev* (8), 265–271 Aug;21. [PubMed: 10922023]
- Aleman S, Vilor-Tejedor N, García-Esteban R, Bustamante M, Dadvand P, Esnaola M, Mortamais M, Forn J, van Drooge BL, Álvarez-Pedrerol M, Grimalt JO, Rivas I, Querol X, Pujol J, Sunyer J, 2018 Aug 2. Traffic-related air pollution, APOEε4 status, and neurodevelopmental outcomes among school children enrolled in the BREATHE project (Catalonia, Spain). *Environ. Health Perspect* 126 (8), 087001. [PubMed: 30073950]
- Allen JL, Conrad K, Oberdörster G, Johnston CJ, Sleezer B, Cory-Slechta DA, 2013 Jan. Developmental exposure to concentrated ambient particles and preference for immediate reward in mice. *Environ. Health Perspect* 121 (1), 32–38. [PubMed: 23063827]
- Allen JL, Liu X, Weston D, et al. , 2014 Jul. Developmental exposure to concentrated ambient ultrafine particulate matter air pollution in mice results in persistent and sex-dependent behavioral neurotoxicity and glial activation. *Toxicol. Sci* 140 (1), 160–178. [PubMed: 24690596]
- Althoff RR, Verhulst FC, Rettew DC, Hudziak JJ, van der Ende J, 2010 Nov. Adult outcomes of childhood dysregulation: a 14-year follow-up study. *J. Am. Acad. Child Adolesc. Psychiatry* 49 (11), 1105–1116. [PubMed: 20970698]
- Axelrod BN, 2002 Mar. Validity of the Wechsler abbreviated scale of intelligence and other very short forms of estimating intellectual functioning. *Assessment* 9 (1), 17–23. [PubMed: 11911230]
- Basner M, McGuire S, 2018 Mar 14. WHO environmental noise guidelines for the European region: a systematic review on environmental noise and effects on sleep. *Int. J. Environ. Res. Public Health* (3), 15 pii: E519. [PubMed: 29538344]
- Block ML, Elder A, Auten RL, Bilbo SD, Chen H, Chen JC, Cory-Slechta DA, Costa D, Diaz-Sanchez D, Dorman DC, Gold DR, Gray K, Jeng HA, Kaufman JD, Kleinman MT, Kirshner A, Lawler C, Miller DS, Nadadur SS, Ritz B, Semmens EO, Tonelli LH, Veronesi B, Wright RO, Wright RJ,

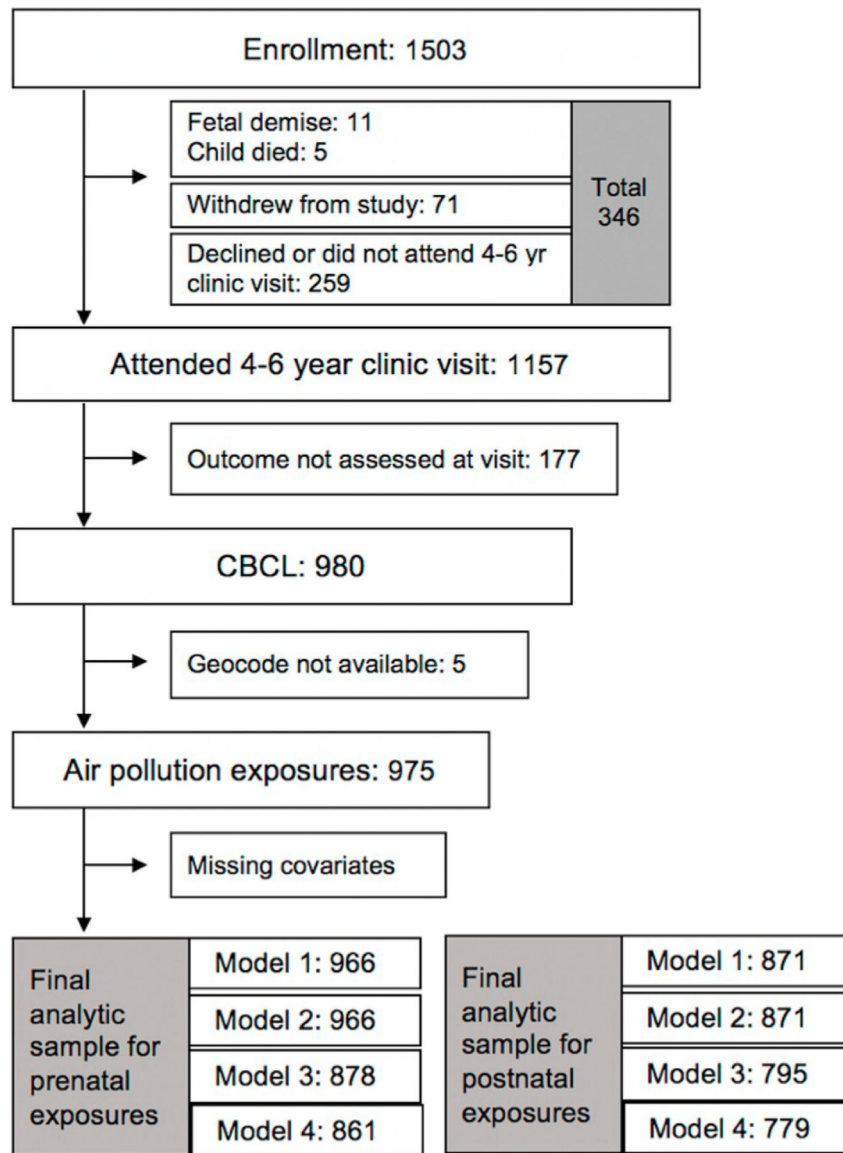


- 2012 Oct. The outdoor air pollution and brain health workshop. *Neurotoxicology* 33 (5), 972–984. [PubMed: 22981845]
- Bolton JL, Marinero S, Hassanzadeh T, Natesan D, Le D, Belliveau C, Mason SN, Auten RL, Bilbo SD, 2017 May 31. Gestational exposure to air pollution alters cortical volume, microglial morphology, and microglia-neuron interactions in a sex-specific manner. *Front. Synaptic Neurosci* 9, 10. [PubMed: 28620294]
- Chiu YH, Bellinger DC, Coull BA, Anderson S, Barber R, Wright RO, Wright RJ, 2013 Jul. Associations between traffic-related black carbon exposure and attention in a prospective birth cohort of urban children. *Environ. Health Perspect* 121 (7), 859–864. 10.1289/ehp.1205940. [PubMed: 23665743]
- Chiu YH, Hsu HH, Coull BA, Bellinger DC, Kloog I, Schwartz J, Wright RO, Wright RJ, 2016 Feb. Prenatal particulate air pollution and neurodevelopment in urban children: examining sensitive windows and sex-specific associations. *Environ. Int* 87, 56–65. 10.1016/j.envint.2015.11.010. [PubMed: 26641520]
- Clark LP, Millet DB, Marshall JD, 2014. National patterns in environmental injustice and inequity: outdoor NO<sub>2</sub> air pollution in the United States. *PLoS One* 9, 8.
- Costa LG, Cole TB, Coburn J, Chang YC, Dao K, Roqué PJ, 2017 Mar. Neurotoxicity of traffic-related air pollution. *Neurotoxicology* 59, 133–139. [PubMed: 26610921]
- Derogatis LR, 1993. BSI Brief Symptom Inventory: Administration, Scoring, and Procedure Manual, fourth ed. National Computer Systems, Minneapolis, MN.
- Di Q, Dai L, Wang Y, Zanobetti A, Choirat C, Schwartz JD, Dominici F, 2017 Dec 26. Association of short-term exposure to air pollution with mortality in older adults. *J. Am. Med. Assoc* 318 (24), 2446–2456.
- Edwards SC, Jedrychowski W, Butscher M, Camann D, Kieltyka A, Mroz E, Flak E, Li Z, Wang S, Rauh V, Perera F, 2010 Sep. Prenatal exposure to airborne polycyclic aromatic hydrocarbons and children's intelligence at 5 years of age in a prospective cohort study in Poland. *Environ. Health Perspect* 118 (9), 1326–1331. 10.1289/ehp.0901070. [PubMed: 20406721]
- Forns J, Dadvand P, Esnaola M, Alvarez-Pedrerol M, López-Vicente M, Garcia-Esteban R, Cirach M, Basagaña X, Guxens M, Sunyer J, 2017 Nov. Longitudinal association between air pollution exposure at school and cognitive development in school children over a period of 3.5 years. *Environ. Res* 159, 416–421. [PubMed: 28858754]
- Forns J, Dadvand P, Foraster M, Alvarez-Pedrerol M, Rivas I, López-Vicente M, Suades-Gonzalez E, Garcia-Esteban R, Esnaola M, Cirach M, Grellier J, Basagaña X, Querol X, Guxens M, Nieuwenhuijsen MJ, Sunyer J, 2016 Apr. Traffic-related air pollution, noise at school, and behavioral problems in Barcelona schoolchildren: a cross-sectional study. *Environ. Health Perspect* 124 (4), 529–535. 10.1289/ehp.1409449. [PubMed: 26241036]
- Forns J, Sunyer J, Garcia-Esteban R, Porta D, Ghassabian A, Giorgis-Allemand L, Gong T, Gehring U, Sørensen M, Standl M, Sugiri D, Almqvist C, Andiarena A, Badaloni C, Beelen R, Berdel D, Cesaroni G, Charles MA, Eriksen KT, Estarlich M, Fernandez MF, Forhan A, Jaddoe VWV, Korek M, Lichtenstein P, Lertxundi A, Lopez-Espinosa MJ, Markevych I, de Nazelle A, Raaschou-Nielsen O, Nieuwenhuijsen M, Pérez-Lobato R, Philippat C, Slama R, Tiesler CMT, Verhulst FC, von Berg A, Vrijkotte T, Nybo Andersen AM, Heude B, Krämer U, Heinrich J, Tiemeier H, Forastiere F, Pershagen G, Brunekreef B, Guxens M, 2018 Sep. Air pollution exposure during pregnancy and symptoms of attention deficit and hyperactivity disorder in children in Europe. *Epidemiology* 29 (5), 618–626. 10.1097/EDE.0000000000000874. [PubMed: 29923866]
- Frankenburg WK, Coons CE, 1986 Apr. Home Screening Questionnaire: its validity in assessing home environment. *J. Pediatr* 108 (4), 624–626 [PubMed: 3958839]
- Gong T, Almqvist C, Bölte S, Lichtenstein P, Anckarsäter H, Lind T, Lundholm C, Pershagen G, 2014 Dec. Exposure to air pollution from traffic and neurodevelopmental disorders in Swedish twins. *Twin Res. Hum. Genet* 17 (6), 553–562. 10.1017/thg.2014.58.
- Gregory AM, Eley TC, O'Connor TG, Plomin R, 2004 Jun. Etiologies of associations between childhood sleep and behavioral problems in a large twin sample. *J. Am. Acad. Child Adolesc. Psychiatry* 43 (6), 744–751. [PubMed: 15167091]
- Hagenaars A, de Vos and Zaidi KMA, 1994. Poverty Statistics in the Late 1980s. Research Based on Micro-data, Office for Official Publications of the European Communities. Luxembourg.

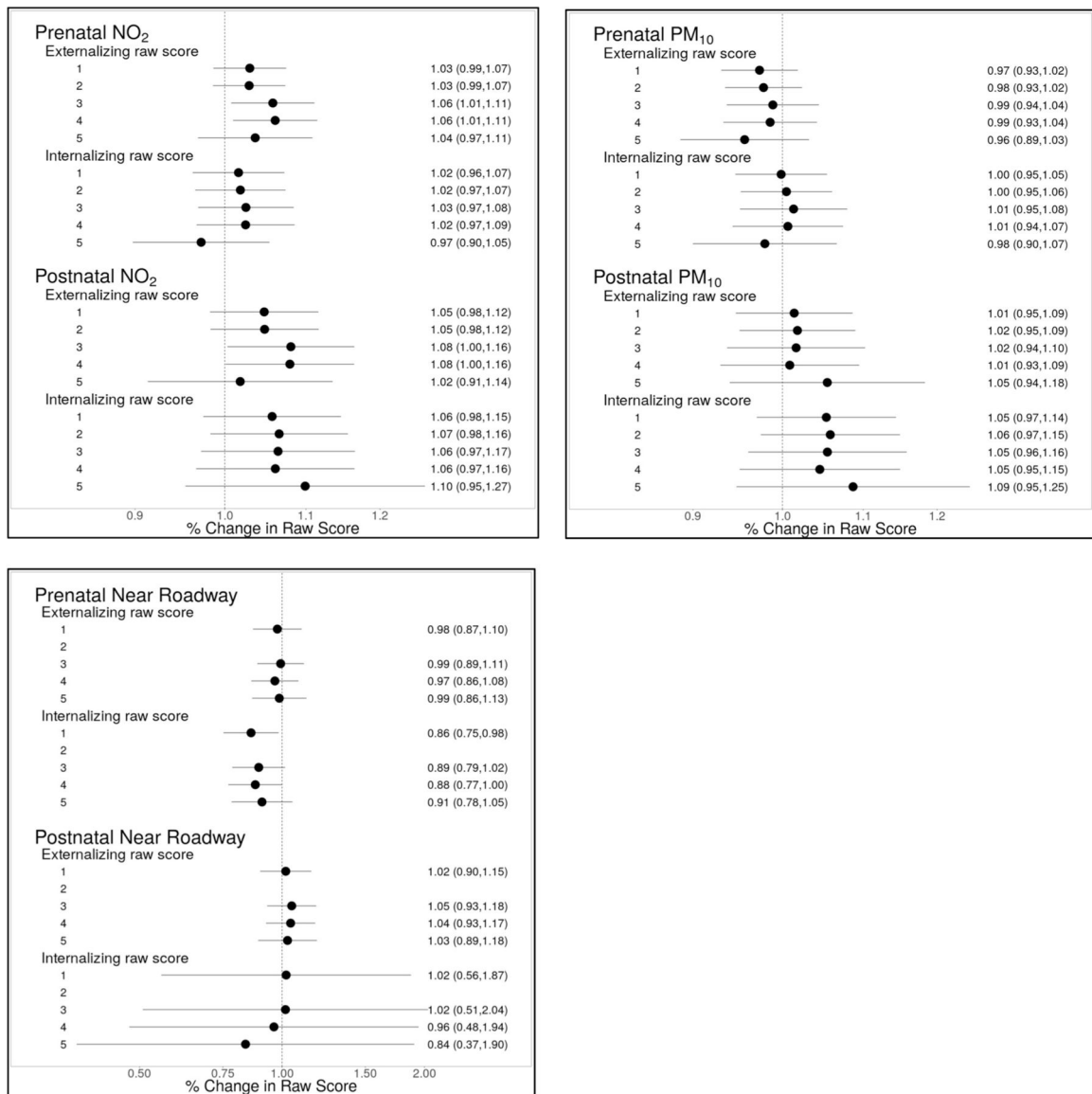
- Hajat A, Hsia C, O'Neill MS, 2015 Dec. Socioeconomic disparities and air pollution exposure: a global review. *Curr. Environ. Health Rep* 2 (4), 440–450. 10.1007/s40572-015-0069-5. [PubMed: 26381684]
- Harris MH, Gold DR, Rifas-Shiman SL, Melly SJ, Zanobetti A, Coull BA, Schwartz JD, Gryparis A, Kloog I, Koutrakis P, Bellinger DC, Belfort MB, Webster TF, White RF, Sagiv SK, Oken E, 2016 Sep - Oct. Prenatal and childhood traffic-related air pollution exposure and childhood executive function and behavior. *Neurotoxicol. Teratol* 57, 60–70. 10.1016/j.ntt.2016.06.008. [PubMed: 27350569]
- Haynes EN, Chen A, Ryan P, Succop P, Wright J, Dietrich KN, 2011 Nov. Exposure to airborne metals and particulate matter and risk for youth adjudicated for criminal activity. *Environ. Res* 111 (8), 1243–1248. 10.1016/j.envres.2011.08.008. [PubMed: 21864838]
- Hofstra MB, Van der Ende J, Verhulst FC, 2000 Jul. Continuity and change of psychopathology from childhood into adulthood: a 14-year follow-up study. *J. Am. Acad. Child Adolesc. Psychiatry* 39 (7), 850–858 [PubMed: 10892226]
- Hooper LG, Kaufman JD, 2018 Apr. Ambient air pollution and clinical implications for susceptible populations. *Ann. Am. Thorac. Soc* 15 (Suppl. 2), S64–S68. [PubMed: 29676646]
- Loftus CT, Hazlehurst MF, Szpiro AA, Ni Y, Tylavsky FA, Bush NR, Sathyanarayana S, Carroll KN, Karr CJ, LeWinn KZ, 2019 Sep. Prenatal air pollution and childhood IQ: preliminary evidence of effect modification by folate. *Environ. Res* 176, 108505. [PubMed: 31229778]
- MacPhee David, 1981. "Knowledge of Infant Development Inventory (KIDI)," Chapel Hill University of North Carolina, Department of Psychology, N.C.
- Margolis AE, Herbstman JB, Davis KS, Thomas VK, Tang D, Wang Y, Wang S, Perera FP, Peterson BS, Rauh VA, 2016 Jul. Longitudinal effects of prenatal exposure to air pollutants on self-regulatory capacities and social competence. *JCPP (J. Child Psychol. Psychiatry)* 57 (7), 851–860. 10.1111/jcpp.12548. [PubMed: 26989990]
- Midouhas E, Kokosi T, Flouri E, 2019 Apr 15. The quality of air outside and inside the home: associations with emotional and behavioural problem scores in early childhood. *BMC Public Health* 19 (1), 406. 10.1186/s12889-019-6733-1. [PubMed: 30987624]
- Mikati I, Benson AF, Luben TJ, Sacks JD, Richmond-Bryant J, 2018 Apr. Disparities in distribution of particulate matter emission sources by race and poverty status. *Am. J. Public Health* 108 (4), 480–485. 10.2105/AJPH.2017.304297. [PubMed: 29470121]
- Min JY, Min KB, 2017 Feb. Exposure to ambient PM(10) and NO(2) and the incidence of attention-deficit hyperactivity disorder in childhood. *Environ. Int* 99, 221–227. 10.1016/j.envint.2016.11.022. Epub 2016 Dec 7. [PubMed: 27939018]
- Moffitt TE, 1993 Oct. Adolescence-limited and life-course-persistent antisocial behavior: a developmental taxonomy. *Psychol. Rev* 100 (4), 674–701 Review. [PubMed: 8255953]
- Mortamais M, Pujol J, van Drooge BL, Macià D, Martínez-Vilavella G, Reynes C, Sabatier R, Rivas I, Grimalt J, Forns J, Alvarez-Pedrerol M, Querol X, Sunyer J, 2017 Aug. Effect of exposure to polycyclic aromatic hydrocarbons on basal ganglia and attention-deficit hyperactivity disorder symptoms in primary school children. *Environ. Int* 105, 12–19. [PubMed: 28482185]
- Newman NC, Ryan P, Lemasters G, Levin L, Bernstein D, Hershey GK, Lockey JE, Villareal M, Reponen T, Grinshpun S, Sucharew H, Dietrich KN, 2013 Jun. Traffic-related air pollution exposure in the first year of life and behavioral scores at 7 years of age. *Environ. Health Perspect* 121 (6), 731–736. [PubMed: 23694812]
- Owens JA, Spirito A, McGuinn M, 2000 Dec 15. The Children's Sleep Habits Questionnaire (CSHQ): psychometric properties of a survey instrument for school-aged children. *Sleep* 23 (8), 1043–1051 [PubMed: 11145319]
- Peng C, den Dekker M, Cardenas A, et al. , 2018 Sep. Residential proximity to major roadways at birth, DNA methylation at birth and midchildhood, and childhood cognitive test scores: Project viva(Massachusetts, USA). *Environ. Health Perspect* 126 (9), 97006. [PubMed: 30226399]
- Perera FP, Chang HW, Tang D, et al. , 2014 Nov 5. Early-life exposure to polycyclic aromatic hydrocarbons and ADHD behavior problems. *PLoS One* 9 (11), e111670. [PubMed: 25372862]
- Perera FP, Li Z, Whyatt R, et al. , 2009 Aug. Prenatal airborne polycyclic aromatic hydrocarbon exposure and child IQ at age 5 years. *Pediatrics* 124 (2), e195–202. [PubMed: 19620194]

- Perera FP, Tang D, Wang S, Vishnevetsky J, Zhang B, Diaz D, Camann D, Rauh V, 2012 Jun. Prenatal polycyclic aromatic hydrocarbon (PAH) exposure and child behavior at age 6–7 years. *Environ. Health Perspect* 120 (6), 921–926. [PubMed: 22440811]
- Peterson BS, Rauh VA, Bansal R, et al. . 2015. Effects of prenatal exposure to air pollutants (polycyclic aromatic hydrocarbons) on the development of brain white matter, cognition, and behavior in later childhood. *JAMA Psychiatry* 72 (6), 531–540. 10.1001/jamapsychiatry.2015.57. [PubMed: 25807066]
- Petty CR, Rosenbaum JF, Hirshfeld-Becker DR, Henin A, Hubley S, LaCasse S, Faraone SV, Biederman J, 2008. The child behavior checklist broad-band scales predict subsequent psychopathology: a 5-year follow-up. *J. Anxiety Disord* 22 (3), 532–539. 10.1016/j.janxdis.2007.04.003. Epub 2007 Apr 21. [PubMed: 17521868]
- Porta D, Narduzzi S, Badaloni C, et al. . 2016 Mar. Air pollution and cognitive development at age 7 in a prospective Italian birth cohort. *Epidemiology* 27 (2), 228–236. [PubMed: 26426942]
- Pujol J, Fenoll R, Macià D, Martínez-Vilavella G, Alvarez-Pedrerol M, Rivas I, Fornis J, Deus J, Blanco-Hinojo L, Querol X, Sunyer J, 2016 Apr 22. Airborne copper exposure in school environments associated with poorer motor performance and altered basal ganglia. *Brain Behav* 6 (6), e00467. [PubMed: 27134768]
- Ravindra, 2008. Atmospheric polycyclic aromatic hydrocarbons: Source attribution, emission factors and regulation. *Atmos. Environ*
- Rivas I, Basagaña X, Cirach M, López-Vicente M, Suades-González E, Garcia-Esteban R, Álvarez-Pedrerol M, Davvand P, Sunyer J, 2019 May. Association between early life exposure to air pollution and working memory and attention. *Environ. Health Perspect* 127 (5), 57002. 10.1289/EHP3169. [PubMed: 31070940]
- Roberts S, Arseneault L, Barratt B, Beevers S, Danese A, Odgers CL, Moffitt TE, Reuben A, Kelly FJ, Fisher HL, 2019 Feb. Exploration of NO<sub>2</sub> and PM<sub>2.5</sub> air pollution and mental health problems using high-resolution data in London-based children from a UK longitudinal cohort study. *Psychiatry Res* 272, 8–17. 10.1016/j.psychres.2018.12.050. [PubMed: 30576995]
- Roy A, Kocak M, Hartman TJ, Vereen S, Adgent M, Piyathilake C, Tylavsky FA, Carroll KN, 2018 Mar. Association of prenatal folate status with early childhood wheeze and atopic dermatitis. *Pediatr. Allergy Immunol* 29 (2), 144–150. 10.1111/pai.12834. Epub 2017 Dec 19. [PubMed: 29168294]
- Rubin DB, 2004. Multiple Imputation for Nonresponse in Surveys John Wiley and Sons, New York.
- Sampson PD, Richards M, Szpiro AA, et al. . 2013 Aug 1. A regionalized national universal kriging model using Partial Least Squares regression for estimating annual PM<sub>2.5</sub> concentrations in epidemiology. *Atmos. Environ* 75, 383–392.
- Schraufnagel DE, Balmes JR, Cowl CT, De Matteis S, Jung SH, Mortimer K, Perez-Padilla R, Rice MB, Riojas-Rodriguez H, Sood A, Thurston GD, To T, Vanker A, Wuebbles DJ, 2019 Feb. Air pollution and noncommunicable diseases: a review by the forum of international respiratory societies' environmental committee, Part 1: the damaging effects of air pollution. *Chest* 155 (2), 409–416. [PubMed: 30419235]
- Sentís A, Sunyer J, Dalmau-Bueno A, Andiarrena A, Ballester F, Cirach M, Estarlich M, Fernández-Somoano A, Ibarluzea J, Íñiguez C, Lertxundi A, Tardón A, Nieuwenhuijsen M, Vrijheid M, Guxens M, INMA Project, 2017 Sep. Prenatal and postnatal exposure to NO<sub>2</sub> and child attentional function at 4–5years of age. *Environ. Int* 106, 170–177. 10.1016/j.envint.2017.05.021. Epub 2017 Jul 6. [PubMed: 28689118]
- Shaw DS, Gilliom M, Ingoldsby EM, Nagin DS, 2003 Mar. Trajectories leading to school-age conduct problems. *Dev. Psychol* 39 (2), 189–200 [PubMed: 12661881]
- Siddique S, Banerjee M, Ray MR, Lahiri T, 2011 Jul. Attention-deficit hyperactivity disorder in children chronically exposed to high level of vehicular pollution. *Eur. J. Pediatr* 170 (7), 923–929. 10.1007/s00431-010-1379-0. [PubMed: 21191614]
- Sontag-Padilla LM, Burns RM, Shih RA, et al., 2015. The Urban Child Institute CANDLE Study: Methodological Overview and Baseline Sample Description RAND Corporation, Santa Monica, CA.

- Suades-González E, Gascon M, Guxens M, Sunyer J, 2015 Oct. Air pollution and neuropsychological development: a review of the latest evidence. *Endocrinology* 156 (10), 3473–3482. 10.1210/en.2015-1403. Epub 2015 Aug 4. [PubMed: 26241071]
- Temam S, Burte E, Adam M, Antó JM, Basagaña X, Bousquet J, Carsin AE, Galobardes B, Keidel D, Künzli N, Le Moual N, Sanchez M, Sunyer J, Bono R, Brunekreef B, Heinrich J, de Hoogh K, Jarvis D, Marcon A, Modig L, Nadif R, Nieuwenhuijsen M, Pin I, Siroux V, Stempfelet M, Tsai MY, Probst-Hensch N, Jacquemin B, 2017 Apr. Socioeconomic position and outdoor nitrogen dioxide (NO<sub>2</sub>) exposure in Western Europe: a multi-city analysis. *Environ. Int* 101, 117–124. [PubMed: 28159394]
- Vishnevetsky J, Tang D, Chang HW, Roen EL, Wang Y, Rauh V, Wang S, Miller RL, Herbstman J, Perera FP, 2015 May-Jun. Combined effects of prenatal polycyclic aromatic hydrocarbons and material hardship on child IQ. *Neurotoxicol. Teratol* 49, 74–80. 10.1016/j.ntt.2015.04.002. Epub 2015 Apr 23.
- Wang, et al. , 2017. Socioeconomic disparities and sexual dimorphism in neurotoxic effects of ambient fine particles on youth IQ: A longitudinal analysis. *PLoS One*
- Wang S, Zhang J, Zeng X, Zeng Y, Wang S, Chen S, 2009 Oct. Association of traffic-related air pollution with children's neurobehavioral functions in Quanzhou, China. *Environ. Health Perspect* 117 (10), 1612–1618. 10.1289/ehp.0800023. Epub 2009 May 11. [PubMed: 20019914]
- WHO, 2012. Serum and Red Blood Cell Folate Concentrations for Assessing Folate Status in Populations. Vitamin and Mineral Nutrition Information System World Health Organization, Geneva. [http://apps.who.int/iris/bitstream/10665/75584/1/WHO\\_NMH\\_NHD\\_EPG\\_12.1\\_eng.pdf](http://apps.who.int/iris/bitstream/10665/75584/1/WHO_NMH_NHD_EPG_12.1_eng.pdf), Accessed date: 9 September 2019.
- Yorifuji T, Kashima S, Diez MH, Kado Y, Sanada S, Doi H, 2017 Feb. Prenatal exposure to outdoor air pollution and child behavioral problems at school age in Japan. *Environ. Int* 99, 192–198. 10.1016/j.envint.2016.11.016. Epub 2016 Nov 24. [PubMed: 27890345]
- Yorifuji T, Kashima S, Higa Diez M, Kado Y, Sanada S, Doi H, 2016 Jan. Prenatal exposure to traffic-related air pollution and child behavioral development milestone delays in Japan. *Epidemiology* 27 (1), 57–65. 10.1097/EDE.0000000000000361. [PubMed: 26247490]
- Younan D, Tuvblad C, Franklin M, Lurmann F, Li L, Wu J, Berhane K, Baker LA, Chen JC, 2018 Aug. Longitudinal analysis of particulate air pollutants and adolescent delinquent behavior in southern California. *J. Abnorm. Child Psychol* 46 (6), 1283–1293. 10.1007/s10802-017-0367-5. [PubMed: 29234991]
- Young MT, Bechle MJ, Sampson PD, Szpiro AA, Marshall JD, Sheppard L, Kaufman JD, 2016 Apr 5. Satellite-based NO<sub>2</sub> and model validation in a national prediction model based on universal kriging and land-use regression. *Environ. Sci. Technol* 50 (7), 3686–3694. 10.1021/acs.est.5b05099. Epub 2016 Mar 21. [PubMed: 26927327]
- Zare Sakhvidi F, Zare Sakhvidi MJ, Mehrparvar AH, Dzhambov AM, 2018 Sep. Environmental noise exposure and neurodevelopmental and mental health problems in children: a systematic review. *Curr. Environ. Health Rep* 5 (3), 365–374. [PubMed: 30014228]

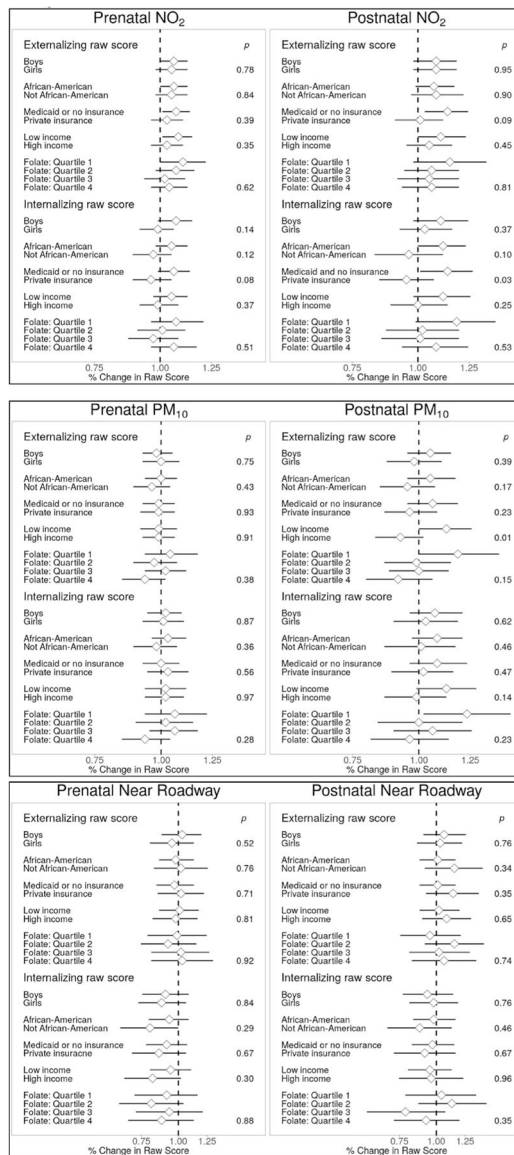


**Fig. 1.** Enrollment in the CANDLE cohort and inclusion in analytic samples.



**Fig. 2. Associations between prenatal and postnatal air pollution exposure and child behavior.** Effect sizes are scaled to a 2 unit increase in NO<sub>2</sub> and PM<sub>10</sub>. For road proximity, effect size represents difference in outcome for women living within 150 m of a busy road compared to those living more than 150 m. Adjustment models for NO<sub>2</sub> and PM<sub>10</sub>: Model 1: adjusted for child age, child sex and recruitment site. Model 2: Model 1 + temporal splines. Model 3: Model 2 + maternal characteristics (age, race, education, prenatal smoking, prenatal depression, IQ), breastfeeding, neighborhood COI (postnatal economics score & educational score), insurance status, adjusted household income, child sleep score at assessment and birth order. Model 4: Model 3 + paternal education, maternal BMI, prenatal vitamin use, marital status and KIDI score. Model 5: Model 3, with pre- and postnatal exposures mutually adjusted. Models for road proximity: Same as above, except Model 2 is not applicable, as distance to roadway is not modeled with time-varying covariates.





**Fig. 3. Analysis of effect modification by participant characteristics.** P-values are for interaction terms. All associations estimated using the “full” adjustment models, which include adjustment for child age and sex, temporal splines (for NO<sub>2</sub> and PM<sub>10</sub> models) maternal characteristics (age, race, education, prenatal smoking, prenatal depression, IQ), breastfeeding, neighborhood COI (postnatal economics score & educational score), insurance status, adjusted household income, child sleep score at assessment and birth order. Models assessing folate were additionally adjusted for folate quartile. Effect sizes for NO<sub>2</sub> and PM<sub>10</sub> are scaled to a 2 unit increase in pollutants.



**Table 1**

Characteristics of study participants, overall and by exposure category.

	Total Population		Proximity to the nearest major roadway during pregnancy						Prenatal NO2 exposure			Prenatal PM10 exposure					
	Mean/ N	SD/%	150 m (N = 703)	Mean/ N	SD/%	<150 m (N = 272)	p- value	11.9 ppb (N = 487)	Mean/ N	SD/%	20.7 µg/m3 (N = 487)	Mean/ N	SD/%	>20.7 µg/m3 (N = 488)	Mean/ N	SD/%	p- value
<b>Child age (yrs)</b>	4.3	0.4	4.3	4.4	0.4	4.4	0.02	4.3	4.3	0.3	4.3	4.3	0.4	4.3	4.3	0.4	0.45
<b>Child sex</b>																	
Male	489	50.2%	346	143	52.6%	143		240	49.3%	249	51.0%	247	50.7%	242	49.6%		
Female	486	49.9%	357	129	47.4%	129	0.35	247	50.7%	239	49.0%	240	49.3%	246	50.4%	0.73	
<b>Maternal age at birth (years)</b>	26.6	5.5	26.7	26.3	5.6	26.3	0.28	27.1	5.7	26.2	5.4	26.6	5.5	26.7	5.6	0.71	
<b>Maternal race</b>																	
African American	626	64.2%	432	194	71.3%	194		274	56.3%	352	72.1%	299	61.4%	327	67.0%		
White	286	29.3%	222	64	23.5%	64		182	37.4%	104	21.3%	150	30.8%	136	27.9%		
Asian	9	0.9%	7	2	0.7%	2		6	1.2%	3	0.6%	6	1.2%	3	0.6%		
Others	3	0.3%	2	1	0.4%	1		3	0.6%	0	0.0%	0	0.0%	3	0.6%		
Multiple	51	5.2%	40	11	4.0%	11	0.07	22	4.5%	29	5.9%	32	6.6%	19	3.9%	0.06	
<b>Maternal education<sup>a</sup></b>																	
<HS	110	11.3%	80	30	11.0%	30		44	9.0%	66	13.5%	67	13.8%	43	8.8%		
HS/GED	471	48.3%	319	152	55.9%	152		211	43.3%	260	53.3%	228	46.8%	243	49.8%		
Technical school	93	9.5%	70	23	8.5%	23		51	10.5%	42	8.6%	43	8.8%	50	10.3%		
College degree	193	19.8%	154	39	14.3%	39		115	23.6%	78	16.0%	90	18.5%	103	21.1%		
Grad/Prof degree	107	11.0%	79	28	10.3%	28		66	13.6%	41	8.4%	59	12.1%	48	9.8%		
missing	1	0.1%	1	0	0.0%	0	0.03	0	0.0%	1	0.2%	0	0.0%	1	0.2%	0.08	
<b>Maternal IQ score</b>	94.8	16.3	95.2	93.6	15.6	93.6	0.16	97.5	16.1	92.0	16.1	94.6	16.9	95.0	15.7	0.69	
<b>Maternal marital status<sup>a</sup></b>																	
Married	369	37.9%	288	81	29.8%	81		231	47.4%	138	28.3%	185	38.0%	184	37.7%		

	Proximity to the nearest major roadway during pregnancy																				
	Total Population				150 m (N = 703)				<150 m (N = 272)				p-value								
	Mean/ N	SD/ %	Mean/ N	SD/ %	Mean/ N	SD/ %	Mean/ N	SD/ %	Mean/ N	SD/ %	Mean/ N	SD/ %	Mean/ N	SD/ %	Mean/ N	SD/ %	Mean/ N	SD/ %	Mean/ N	SD/ %	p-value
Widowed	1	0.1%	1	0.1%	0	0.0%	0	0.0%	1	0.2%	0	0.0%	1	0.2%	0	0.0%	1	0.2%	0	0.0%	
Divorced	19	2.0%	12	1.7%	7	2.6%	7	2.1%	9	1.9%	10	2.1%	8	1.6%	11	2.3%	8	1.6%	11	2.3%	
Separated	8	0.8%	4	0.6%	4	1.5%	4	1.0%	3	0.6%	5	1.0%	3	0.6%	5	1.0%	3	0.6%	5	1.0%	
Never Married	402	41.2%	274	39.0%	128	47.1%	128	46.5%	175	35.9%	227	46.5%	203	41.7%	199	40.8%	203	41.7%	199	40.8%	
Living with partner	175	18.0%	123	17.5%	52	19.1%	52	19.1%	68	14.0%	107	21.9%	87	17.9%	88	18.0%	87	17.9%	88	18.0%	
Missing	1	0.1%	1	0.1%	0	0.0%	0	0.0%	0	0.0%	0	0.0%	0	0.0%	1	0.2%	0	0.0%	1	0.2%	0.85
<b>Prenatal smoking</b>																					
No	888	91.1%	647	92.0%	241	88.6%	241	88.6%	449	92.2%	439	90.0%	436	89.5%	452	92.6%	436	89.5%	452	92.6%	
Yes	86	8.8%	56	8.0%	30	11.0%	30	11.0%	38	7.8%	48	9.8%	51	10.5%	35	7.2%	51	10.5%	35	7.2%	
Missing	1	0.1%	0	0.0%	1	0.4%	1	0.4%	0	0.0%	1	0.2%	0	0.0%	1	0.2%	0	0.0%	1	0.2%	0.07
<b>Health insurance status<sup>a</sup></b>																					
No insurance	2	0.2%	1	0.1%	1	0.4%	1	0.4%	1	0.2%	1	0.2%	1	0.2%	1	0.2%	1	0.2%	1	0.2%	
Medicaid or Medicare only	550	56.4%	382	54.3%	168	61.8%	168	61.8%	230	47.2%	320	65.6%	286	58.7%	264	54.1%	286	58.7%	264	54.1%	
Medicaid/ Medicare and private insurance	35	3.6%	28	4.0%	7	2.6%	7	2.6%	17	3.5%	18	3.7%	20	4.1%	15	3.1%	20	4.1%	15	3.1%	
Private insurance only	388	39.8%	292	41.5%	96	35.3%	96	35.3%	239	49.1%	149	30.5%	180	37.0%	208	42.6%	180	37.0%	208	42.6%	0.31
<b>Prenatal depression (BSI Sub-scale T-score)</b>	48.3	7.8	48.1	7.6	48.8	8.3	48.8	8.3	48.0	7.8	48.6	7.9	48.2	7.7	48.3	8.0	48.2	7.7	48.3	8.0	0.98
<b>Breastfeeding</b>																					
Never	347	35.6%	243	34.6%	104	38.2%	104	38.2%	150	30.8%	197	40.4%	159	32.7%	188	38.5%	159	32.7%	188	38.5%	
<6 months	289	29.6%	218	31.0%	71	26.1%	71	26.1%	152	31.2%	137	28.1%	153	31.4%	136	27.9%	153	31.4%	136	27.9%	
6 months	331	34.0%	236	33.6%	95	34.9%	95	34.9%	179	36.8%	152	31.2%	169	34.7%	162	33.2%	169	34.7%	162	33.2%	
Missing	8	0.8%	6	0.9%	2	0.7%	2	0.7%	6	1.2%	2	0.4%	6	1.2%	2	0.4%	6	1.2%	2	0.4%	0.17



	Total Population (N = 975)				Proximity to the nearest major roadway during pregnancy				Prenatal NO2 exposure				Prenatal PM10 exposure				
	Mean/ N	SD/ %	Mean/ N	SD/ %	150 m (N = 703)	<150 m (N = 272)	p- value	11.9 ppb (N = 487)	>11.9 ppb (N = 488)	p- value	20.7 µg/m3 (N = 487)	>20.7 µg/m3 (N = 488)	Mean/ N	SD/ %	Mean/ N	SD/ %	p- value
missing	5	0.5%	3	0.4%	2	0.7%	0.06	2	0.4%	3	0.6%	0.002	3	0.6%	2	0.4%	0.12
Childhood opportunity index: educational index	0.01	0.54	0.04	0.57	-0.06	0.47	0.06	0.21	-0.19	<0.001	-0.05	0.51	0.06	0.57	<0.001		
Childhood opportunity index: economic index	-0.06	0.60	-0.07	0.59	-0.06	0.62	0.37	0.01	-0.14	<0.001	-0.09	0.65	-0.03	0.55	<0.001		
Knowledge of infant development (KIDI) score, total	0.65	0.15	0.66	0.15	0.65	0.13	0.39	0.67	0.14	<0.001	0.65	0.15	0.66	0.14	0.20		

<sup>a</sup>Reported at enrollment.

Table 2

Air pollution exposures.

Air pollutants	N	Mean	SD	25th percentile	Median	75th percentile	IQR <sub>w</sub>
Prenatal NO <sub>2</sub> (ppb) <sup>a</sup>	975	12.0	2.4	10.3	11.9	14.1	3.8
Prenatal PM <sub>10</sub> (ug/m <sup>3</sup> ) <sup>a</sup>	975	20.8	2.0	19.4	20.7	22.1	2.8
Postnatal NO <sub>2</sub> (ppb) <sup>b</sup>	975	8.6	1.8	8.1	8.6	10.7	2.5
Postnatal PM <sub>10</sub> (ug/m <sup>3</sup> ) <sup>b</sup>	975	17.2	1.5	16.3	17.2	18.3	2.1
Distance to A1 roadway (m)	975	2556	1865	916	2095	3275	2359
Distance to A2 roadway (m)	975	2005	1656	286	1517	2749	2463
Distance to A3 roadway (m)	975	451	537	105	304	504	399

<sup>a</sup>Prenatal NO<sub>2</sub> and PM<sub>10</sub> estimated using the 2006 model predictions, time-weighted by across all reported addresses during the prenatal period.<sup>b</sup>Postnatal NO<sub>2</sub> and PM<sub>10</sub> estimated using 2011 model predictions, time-weighted across all reported addresses between birth and Age 4.

**Table 3**

Analysis of behavior scores relative to clinical thresholds.

Adjustment model <sup>d</sup>	Odds of externalizing t-score >63 with prenatal higher exposure						Odds of externalizing t-score >63 with higher postnatal exposure										
	Prenatal NO2		Prenatal PM10		Prenatal Proximity to road		Postnatal NO2		Postnatal PM10		Postnatal proximity to road						
	OR <sup>b</sup>	95% CI	OR <sup>b</sup>	95% CI	OR	95% CI	OR <sup>b</sup>	95% CI	OR <sup>b</sup>	95% CI	OR	95% CI					
Model 1	1.35	1.06	1.72	1.09	1.24	0.65	2.35	1.55	1.03	2.32	1.04	0.74	1.48	0.90	0.78	1.04	
Model 2	1.40	1.09	1.80	0.71	1.11	NA	NA	1.63	1.07	2.49	1.08	0.75	1.56	NA	NA	NA	
Model 3	1.57	1.02	2.40	0.76	1.17	1.31	0.62	1.96	1.03	3.71	0.87	0.46	1.64	0.96	0.84	1.10	
Model 4	1.67	1.02	2.74	0.79	1.26	1.14	0.52	1.55	0.82	2.96	0.70	0.33	1.50	0.94	0.82	1.08	
Model 5 (with adjustment for postnatal exposure)	1.07	0.67	1.71	0.77	1.25	1.21	0.54	1.67	0.82	3.40	1.00	0.46	2.19	0.99	0.84	1.16	
Adjustment model <sup>d</sup>	Odds of internalizing t-score >63 with prenatal higher exposure						Odds of internalizing t-score >63 with higher postnatal exposure										
	Prenatal NO2		Prenatal PM10		Prenatal Proximity to road		Postnatal NO2		Postnatal PM10		Postnatal proximity to road						
	OR <sup>b</sup>	95% CI	OR <sup>b</sup>	95% CI	OR	95% CI	OR <sup>b</sup>	95% CI	OR <sup>b</sup>	95% CI	OR	95% CI					
Model 1	1.02	0.96	1.07	1.00	0.95	1.05	0.86	0.75	0.98	1.06	0.70	1.59	0.65	1.39	0.61	0.30	1.22
Model 2	1.02	0.97	1.07	1.00	0.95	1.06	NA	NA	NA	1.15	0.75	1.77	0.65	1.42	NA	NA	NA
Model 3	1.03	0.97	1.08	1.01	0.95	1.08	0.89	0.79	1.02	1.21	0.66	2.22	0.39	1.27	0.74	0.35	1.57
Model 4	1.02	0.97	1.09	1.01	0.94	1.07	0.88	0.77	1.00	1.04	0.58	1.88	0.35	1.19	0.66	0.29	1.46
Model 5 (with adjustment for postnatal exposure)	0.97	0.90	1.05	0.98	0.90	1.07	0.91	0.78	1.05	1.14	0.45	2.93	0.34	2.36	0.92	0.38	2.23

<sup>a</sup>Model 1 is adjusted for child age and sex. Model 2 includes covariates in Model 1 plus temporal splines (NO2 and PM10 only). Model 3 includes covariates in Model 2 plus maternal characteristics (age, race, education, prenatal smoking, prenatal depression, IQ), breastfeeding, neighbourhood COI (postnatal economics score & educational score), insurance status, adjusted household income, child sleep score at assessment and birth order. Model 4 includes covariates in Model 3 plus paternal education, maternal BMI, prenatal vitamin use, marital status and KIDI score. Model 5 is adjusted for all covariates in Model 3 plus postnatal exposure for analyses of prenatal exposure and vice versa.

<sup>b</sup>Odds ratios are scaled to a 2 unit increase in NO2 or PM10.