

UC Davis

UC Davis Previously Published Works

Title

On QSAR-based cardiotoxicity modeling with the expressiveness-enhanced graph learning model and dual-threshold scheme

Permalink

<https://escholarship.org/uc/item/6d9395xn>

Authors

Wang, Huijia
Zhu, Guangxian
Izu, Leighton T
[et al.](#)

Publication Date

2023

DOI

10.3389/fphys.2023.1156286

Peer reviewed



OPEN ACCESS

EDITED BY

Henggui Zhang,
The University of Manchester, United Kingdom

REVIEWED BY

Peter M. Kekenos-Huskey,
Loyola University Chicago, United States
Giuseppe Felice Mangiatordi,
National Research Council (CNR), Italy

*CORRESPONDENCE

Ming Huang,
✉ alex-mhuang@is.naist.jp

RECEIVED 01 February 2023

ACCEPTED 05 April 2023

PUBLISHED 09 May 2023

CITATION

Wang H, Zhu G, Izu LT, Chen-Izu Y, Ono N, Altaf-Ul-Amin M, Kanaya S and Huang M (2023), On QSAR-based cardiotoxicity modeling with the expressiveness-enhanced graph learning model and dual-threshold scheme. *Front. Physiol.* 14:1156286. doi: 10.3389/fphys.2023.1156286

COPYRIGHT

© 2023 Wang, Zhu, Izu, Chen-Izu, Ono, Altaf-Ul-Amin, Kanaya and Huang. This is an open-access article distributed under the terms of the [Creative Commons Attribution License \(CC BY\)](https://creativecommons.org/licenses/by/4.0/). The use, distribution or reproduction in other forums is permitted, provided the original author(s) and the copyright owner(s) are credited and that the original publication in this journal is cited, in accordance with accepted academic practice. No use, distribution or reproduction is permitted which does not comply with these terms.

On QSAR-based cardiotoxicity modeling with the expressiveness-enhanced graph learning model and dual-threshold scheme

Huijia Wang¹, Guangxian Zhu¹, Leighton T. Izu², Ye Chen-Izu³, Naoaki Ono⁴, MD Altaf-Ul-Amin¹, Shigehiko Kanaya¹ and Ming Huang^{1*}

¹Graduate School of Science and Technology, Nara Institute of Science and Technology, Ikoma, Japan, ²Department of Pharmacology, University of California, Davis, CA, United States, ³Department of Biomedical Engineering, University of California, Davis, CA, United States, ⁴Data Science Center, Nara Institute of Science and Technology, Ikoma, Japan

Introduction: Given the direct association with malignant ventricular arrhythmias, cardiotoxicity is a major concern in drug design. In the past decades, computational models based on the quantitative structure–activity relationship have been proposed to screen out cardiotoxic compounds and have shown promising results. The combination of molecular fingerprint and the machine learning model shows stable performance for a wide spectrum of problems; however, not long after the advent of the graph neural network (GNN) deep learning model and its variant (e.g., graph transformer), it has become the principal way of quantitative structure–activity relationship-based modeling for its high flexibility in feature extraction and decision rule generation. Despite all these progresses, the expressiveness (the ability of a program to identify non-isomorphic graph structures) of the GNN model is bounded by the WL isomorphism test, and a suitable thresholding scheme that relates directly to the sensitivity and credibility of a model is still an open question.

Methods: In this research, we further improved the expressiveness of the GNN model by introducing the substructure-aware bias by the graph subgraph transformer network model. Moreover, to propose the most appropriate thresholding scheme, a comprehensive comparison of the thresholding schemes was conducted.

Results: Based on these improvements, the best model attains performance with 90.4% precision, 90.4% recall, and 90.5% F1-score with a dual-threshold scheme (active: $<1 \mu M$; non-active: $>30 \mu M$). The improved pipeline (graph subgraph transformer network model and thresholding scheme) also shows its advantages in terms of the activity cliff problem and model interpretability.

KEYWORDS

hERG, cardiotoxicity, graph transformer neural network, meta-path, dual-threshold

1 Introduction

It is known that cardiotoxicity is a staple step for healthcare in the cardiovascular drug design because cardiotoxicity leads to electrophysiological dysfunction of the heart or muscle damage (Hayat (2017); Albini et al. (2010)). Therefore, cardiotoxicity is the main reason for the failure of clinical candidates or post-market withdrawal (Klon, 2010). Genetically pharmacological studies evidence the causalities to cardiotoxicity is the human ether-à-go-go-related gene (hERG) ion channel protein expressed in the cardiomyocyte (Comollo et al. (2022); Warmke and Ganetzky (1994)). The hERG gene encodes a voltage-gated potassium channel, which is a key component in the formation of the cardiac action potential by activating the delayed rectifier potassium current rapidly (Cavalluzzi et al., 2020). The extended pockets of the hERG channel are sensitive to a wide range of drugs (Wang and MacKinnon, 2017): the binding to the hERG may result in blockage of the potassium ion channel, which delays the repolarization of the action potential across the cell membrane, potentially leading to prolongation of the QT interval in the electrocardiogram (ECG) (Kratz et al. (2017); Curran et al. (1995)). QT prolongation leads to a potentially lethal form of ventricular tachycardia associated with decreased blood pressure and fainting (Viskin (1999); Aerssens and Paulussen (2005)). Despite the strictly controlled process that has been taken for drug development, it has been confirmed that many types of drugs, including antibiotics, antimalarials, gastroprokinetics, antiarrhythmics, and antipsychotics, bind with the hERG (Ma et al., 2022). Therefore, the assessment of hERG-related cardiotoxicity now is recognized as a common practice in the preclinical stage of drug discovery (Sanguinetti and Tristani-Firouzi, 2006).

Determining hERG-related cardiotoxicity in a medical manner has two approaches: non-electrophysiological and electrophysiological methodologies (Yu et al., 2016a). Considering that the effectiveness of non-electrophysiological metrics is still an open question (e.g., radioligand binding assays and rubidium efflux assays), electrophysiological methods predominate (e.g., the well-known patch clamp) (Villoutreix and Taboureau, 2015). Electrophysiological methods involve measurements of voltage changes, and voltage states can significantly alter hERG IC_{50} values, which may not be reflected in non-electrophysiology assays (Jing et al. (2015); Scanziani and Häusser (2009); Park et al. (2013)). However, electrophysiological experiments are time consuming with low throughput, and the procedure usually relies on highly trained practitioners (Yu et al. (2016b); Kornreich (2007)). Albeit with the rapid progress in instrumental automation, the advanced throughput is far from satisfactory given tens of thousands of candidates (Wang and MacKinnon, 2017).

Quantitative structure–activity relationship (QSAR) is a general concept for computational models, which is proposed based on the presumption that similar chemical structures give birth to similar bioactivities (Harkati et al., 2016). Conventionally, the computational model can be divided into two consecutive but independent steps: chemical representation and structure–bioactivity association (Butler et al., 2018). Regarding chemical representation, molecular fingerprint, which is a predefined way to characterize molecular structures by annotating the chemical substructures, is pervasively used. Amongst a variety

of fingerprints, the extended connectivity fingerprint (ECFP) is an efficient way for characterization (Morgan, 1965). The ECFP extracts substructures iteratively as the inclusion radius increases and assigns an identifier to each unique substructure. Of note, in the final fingerprint, the order of identifiers is rearranged, and the connectivity between substructures is not included (Rogers and Hahn, 2010). In the second step, machine learning algorithms, such as support vector machine and partial least squares regression, are used to associate the representation and the targeted properties (Rathman et al., 2018).

The utilization of graph neural networks (GNNs) in molecular representation generation has been gaining increasing attention in the field of computational chemistry as a promising approach. Unlike traditional, modular computational models, GNNs offer a more flexible and problem-oriented end-to-end framework (Reiser et al., 2022). This flexibility is a result of the GNNs' ability to effectively incorporate the interdependencies between the various steps involved in molecular representation generation, as opposed to the mutually independent steps of conventional models (Zhou et al., 2020). The adoption of GNNs as a framework for molecular representation generation can, thus, provide a more holistic and efficient approach to the analysis of chemical systems (Reiser et al., 2022). In GNN models, graphs, as a fundamental data structure, model a set of entities (nodes) and their interconnections (edges). In this context, molecules can be conceptualized as graphs, with atoms serving as the nodes and chemical bonds serving as the edges. The application of GNNs to molecular graphs has the potential to generate more robust molecular fingerprints, thus enhancing the prediction of molecular properties (Duvenaud et al., 2015). The capability of the GNN and its variant has been validated in the studies by Koge et al. (2021) and Miyazaki et al. (2020).

Even though the molecular structure of the hERG channel has been resolved recently, the binding of chemical compounds to the hERG molecule is still difficult to predict due to the high flexibility in the structure. Hence, ligand-based in-silico modeling is still a highly attractive approach in cardiotoxicity prediction (Chen et al., 2018). Doddareddy et al. (2010) collected a dataset of 2,644 compounds and used them to build an SVM classification model based on ECFP for hERG blockers. Chavan et al. (2016) tried to use a consensus model based on the k-nearest neighbor model (KNN) input with eight types of fingerprints to predict the cardiotoxicity for a dataset of 172 compounds, and a careful comparison of different models, including random forest and SVM, was conducted by Delre et al. (2022) to extract the best pipeline of cardiotoxicity modeling. Cai et al. (2019) constructed a multi-task deep neural network input with Mol2vec feature vectors and MOE descriptors to predict the cardiotoxicity for a total of 7,889 compounds.

Before devising a computational model of cardiotoxicity, insight into this problem, i.e., domain knowledge, should be indicated and addressed in the modeling process. Molecular activity cliff (AC) refers to pairs of molecules with similar structures but greatly different bioactivity potency (Ayed, 2022). It is a common phenomenon that could be misleading for machine learning models based on the QSAR principle (Van Tilborg et al., 2022). Consequently, the problem of “*how to build a model to find the key feature from massive redundant data in active cliff molecules?*”

is actually problem oriented. Based on this idea, the match molecular pair (MMP) dataset (Park et al., 2022) and the subsequent MMP fingerprint (Tamura et al., 2021) are erected to facilitate AC identification. The MMP fingerprint represents a molecule by taking in its activity cliff counterpart, that is, to encode the shared core (scaffold), as well as the distinction and resemblance of the two substituents in a binary vector of a variable length (Tamura et al., 2021). In a study that focuses on the detection of AC detection, this relative distance is plausible and efficient. However, in a more comprehensive problem where the AC is only one of the influential factors of a model, a self-context-aware encoding of the core and the branches is desirable. Self-context-aware means that the relations between the core and the branches of a molecule are embedded in some way. It is different from global-structure-aware, where only the relation between the core and a specific branch is considered.

Another issue is the unambiguous labeling, which is a non-trivial step in the process of computational modeling (Villoutreix and Taboureau, 2015). Esposito et al. and Cai et al. tried to use automated procedures to select the optimal threshold (Esposito et al., 2021; Cai et al., 2019). However, given that the optimal threshold should be biomedically sound as well, there is no gold standard for the threshold of cardiotoxicity as of now, although 1, 10, and 30 μM are the most commonly used for thresholding (Konda et al., 2019; Zhang et al., 2016; Kim and Nam (2020); Ryu et al. (2020); Zhang et al. (2022)). Recently, some studies have used a dual-threshold approach in modeling (Creanza et al., 2021). A multi-task DNN model was constructed by Cai et al. to investigate different inactive thresholds (10, 20, 40, 60, 80, and 100 μM); the accuracy was 0.81, 0.82, 0.89, 0.90, 0.93, and 0.91, respectively (Cai et al., 2019). Even though Cai's model obtained an accuracy of 0.93 with the 80 μM threshold, the resultant dataset was unbalanced (3,485 positives vs. 469 negatives), and the class-wise performances for the blocker and non-blocker differed greatly (0.99 vs. 0.62).

Stemming from the aforementioned considerations, the presented work tries to introduce a subgraph bias for message passing and aggregation based on domain knowledge about cardiotoxicity. By passing the message from the neighboring nodes with the same and different kinds of subgraphs (predefined meta-paths), the new framework is expected to improve the expressiveness of the conventional GNN model. In this manner, heterogeneity that has been abolished by the simplification of homogeneity of the GNN model can also be partially recovered. The domain knowledge-inspired method uses the predefined subgraphs to express the heterogeneity of chemical structure and implicitly injects the structural information into the nodes by introducing the learnable weights for the subgraphs. By introducing the problem-wise subgraph bias into the model, it is believed that the framework could be applied to a broad spectrum of problems that need to incorporate heterogeneity into the model. The contribution of this study is summarized as follows:

- We proposed a new graph neural model whose expressiveness is lifted by introducing the cardiotoxicity-specific subgraph aware bias.
- We determined a dual-threshold mechanism for computational modeling based on a comprehensive validation (a dedicated hERG database and 50 FDA-approved drugs).

The aforementioned improved pipeline is expected to be more robust against the activity cliff and to further improve the performance of the model.

2 Materials and methods

2.1 Data collection

The dataset *hERG-DB* is extracted from the hEMBL bioactivity database (Creanza et al., 2021) and used as the main training and testing datasets. The supplementary material provides details regarding the selection method. For sparsity consideration of adjacency matrices, we selected molecules with less than 45 non-hydrogen atoms from the *hERG-DB* for training and testing, which covers 99.0% of the molecules in the entire dataset. As a result, the dataset in our study contains 8,253 molecules. Furthermore, 50 FDA-approved drugs compiled by Zhang et al. (2022) were used to examine the proposed method's performance and finalize the optimized thresholding scheme.

As explained in *Introduction*, the setting of a threshold for computational modeling is still controversial. Therefore, single- and dual-threshold schemes with different values (Table 1) are applied to the dataset for a comprehensive comparison. Regarding the single-threshold scheme, in addition to the commonly used 1 and 10 μM , we consider using 20 μM . In the case of the dual-threshold scheme, the values that define the blockers (active threshold) and the decoys (inactive threshold) are different. For example, the dual threshold " $\leq 1 \mu\text{M}, > 10 \mu\text{M}$ " means that molecules with IC_{50} values less than 1 μM are viewed as blockers, while those with IC_{50} values higher than 10 μM are viewed as non-blockers. The ones with IC_{50} values between 1 and 10 μM are removed from the dataset. The dual threshold is also denoted as [XX, YY] μM hereafter, where XX represents the blocker threshold and YY represents the non-blocker threshold. In determining the dual threshold, the active threshold is relatively well defined at 1 μM and, thus, fixed throughout the study. A comparison is made between the inactive thresholds of 10, 20, 30, and 40 μM , as indicated in Table 1. Additionally, the balanced version is created by randomly selecting non-blockers and maintaining the same sample number as the dual-threshold datasets.

2.2 Graph subgraph transformer network model

2.2.1 Molecular graph representation

To represent the properties of molecules in a computational format, that is, to define a molecule with N atoms as two main components, the adjacency matrix and feature matrix, the adjacency matrix A , which is defined by $A \in \mathbb{R}^{N \times N}$, represents the topological information of the molecule, such as the connectivity of atoms. The D -dimension feature matrix X , which is defined by $X \in \mathbb{R}^{N \times D}$, stores information about the atomic features of the molecule, such as atomic properties and location in relation to the topological information represented in the adjacency matrix. This information can then be used for computational analysis and simulations of molecular systems.

TABLE 1 Datasets of different thresholds.

Usage	Range	Class	Sample no.	All		
One threshold	$\leq 1 \mu M, > 1 \mu M$	$> 1 \mu M$	Non-blocker	6,958	8,253	
		$\leq 1 \mu M$	Blocker	1,295		
	$\leq 10 \mu M, > 10 \mu M$	$> 10 \mu M$	Non-blocker	3,722	8,253	
		$\leq 10 \mu M$	Blocker	4,531		
	$\leq 20 \mu M, > 20 \mu M$	$> 20 \mu M$	Non-blocker	2,871	8,253	
		$\leq 20 \mu M$	Blocker	5,283		
Dual threshold/imbalanced	$\leq 1 \mu M, > 1 \mu M$	$> 1 \mu M$	Non-blocker	6,958	8,253	
		$\leq 1 \mu M$	Blocker	1,295		
	$\leq 1 \mu M, > 10 \mu M$	$> 10 \mu M$	Non-blocker	3,722	5,017	
		$\leq 1 \mu M$	Blocker	1,295		
	$\leq 1 \mu M, > 20 \mu M$	$> 20 \mu M$	Non-blocker	2,871	4,166	
		$\leq 1 \mu M$	Blocker	1,295		
	$\leq 1 \mu M, > 30 \mu M$	$> 30 \mu M$	Non-blocker	2,052	3,347	
		$\leq 1 \mu M$	Blocker	1,295		
	$\leq 1 \mu M, > 40 \mu M$	$> 40 \mu M$	Non-blocker	1,358	2,653	
		$\leq 1 \mu M$	Blocker	1,295		
	Balanced	$\leq 1 \mu M, > 1 \mu M$	$> 1 \mu M$	Non-blocker	1,295	2,590
			$\leq 1 \mu M$	Blocker	1,295	
$\leq 1 \mu M, > 10 \mu M$		$> 10 \mu M$	Non-blocker	1,295	2,590	
		$\leq 1 \mu M$	Blocker	1,295		
$\leq 1 \mu M, > 20 \mu M$		$> 20 \mu M$	Non-blocker	1,295	2,590	
		$\leq 1 \mu M$	Blocker	1,295		
$\leq 1 \mu M, > 30 \mu M$		$> 30 \mu M$	Non-blocker	1,295	2,590	
		$\leq 1 \mu M$	Blocker	1,295		
$\leq 1 \mu M, > 40 \mu M$		$> 40 \mu M$	Non-blocker	1,295	2,590	
		$\leq 1 \mu M$	Blocker	1,295		

2.2.2 Subgraph bias expressiveness enhancement

It has been shown that the graph neural networks based on the message passing and aggregation scheme are the neural approaches of the 1st-order Weisfeiler–Leman algorithm (1-WL) (Morris et al., 2021). Given that the 1-WL fails at distinguishing some basic non-isomorphic graph structures, improvements/amendments, such as the GNN for higher-order WL or additional structure-aware information, have been tried to make the GNN universal (refer to the universal approximation theorem of neural network) (Bouritsas et al., 2020).

On the other hand, it is well known that the simplification from a heterogeneous graph into the homogeneous one, which is the underlying requirement of the conventional GNN model, abolishes the relational information that is important for chemical structure. In this paper, we propose a domain knowledge-inspired technique that uses the predefined substructure (subgraph) to 1) express the heterogeneity of chemical structure and 2) implicitly inject the structural information into the nodes by introducing the learnable weights for the predefined subgraphs.

Specifically, subgraph bias to enhance the expressiveness of a GNN model is introduced based on the domain knowledge in cardiotoxicity screening. The chemical core, the Murcko scaffold, is extracted as a special subgraph. Alongside the whole molecule being another subgraph, context-aware information can be encoded. In addition, the aromatic rings and the heteroatoms (nitrogen, oxygen, and sulfur atoms) are also extracted as independent subgraphs because their interactions with residues are reported responsible for hERG blockage (Creanza et al. (2021); Moorthy et al. (2021); Kim and Nam (2020)).

2.2.3 Heterogeneous decomposition mapping

In order to integrate the heterogeneous information presented by the subgraphs defined above, we propose a mapping function that decomposes the adjacency matrix A into T sub-adjacency matrices (subgraphs) denoted by $G_i, i \in \{1, \dots, T\}$. Here, i represents the index of the subgraphs, ranging from 1 to T , and T is the number of subgraphs. To facilitate this integration of subgraphs, adjacency matrix A is transformed into a T -dimensional tensor $M \in \mathbb{R}^{T \times N \times N}$.

The tensor M can be constructed as follows:

$$M = G_1 \oplus G_2 \oplus \dots \oplus G_T, \quad i \in 1, \dots, T. \quad (1)$$

Here, \oplus represents the concatenation function that combines matrices into tensors along the specified dimension; in this case, $\text{dim} = 0$, which is particularly useful for scientific computing applications.

2.2.4 Graph transformer process

The graph transformer (GT) process is inspired by the self-attention mechanism in the transformer framework (Vaswani et al., 2017). Similarly, the GT process incorporates learnable weight vectors W that associate and weigh the subgraphs to capture and learn more expressive and powerful node embeddings, which can be used for various graph-based learning tasks.

To associate the subgraphs and apply subgraph weighting, we introduce learnable vectors W represented by $W = \{w_1, w_2, \dots, w_T\}$. These learnable vectors are used to perform tensor-scalar multiplication along the first dimension of M , which corresponds to the adjacency matrix of a subgraph $M = \{G_1, G_2, \dots, G_T\}$. The multiplication of the learnable vectors W with the tensor M and subsequent dimensional accumulation results in the generation of a meta-path, denoted by Q :

$$Q = W \cdot M = \sum_{i \in T} (w_i \cdot G_i). \quad (2)$$

The elements of w_i are aligned with the subgraphs' type dimension and are optimized during the training process. This approach can be considered as the core mechanism that introduces subgraph bias tailored to a specific problem. Consequently, the GT process essentially constitutes an attention-based message passing at the substructure level.

Similar to the multi-head attention mechanism in transformers, the multi-head graph transformer (MGT) process is introduced to capture and integrate diverse higher-order relationships among nodes by computing multiple meta-paths in parallel. Specifically, MGT defines a set $W^{(n)}$, which contains n weight vectors W , where n is the number of heads. During the inference process, the elements of $W^{(n)}$ will be calculated in parallel to generate multiple meta-paths $Q_1 \dots Q_n$. We first define the terms of individual Q as Q_k :

$$Q_k = W^{(k)} \cdot M = \sum_{i \in T} (w_i^{(k)} \cdot G_i), \quad k \in 1, \dots, n. \quad (3)$$

At the end of the MGT process, the Q_p that integrates multiple meta-paths is calculated as the product of the Q_k terms:

$$Q_p = \prod_{k=1}^L Q_k = Q_1 \dots Q_n, \quad (4)$$

where n also represents the n -hop connections that associate Q_1 with Q_n . Each $Q_k k \in \{1, \dots, n\}$ ($n = 2$ in this study) captures different aspects of node relationships, and by combining them through multiplication, as shown in Eq. 4, the resulting Q_p effectively encodes essential and comprehensive information of the graph. In other words, the representation of the graph in the pipeline above contains more relevant information about the specific task, while the expressiveness of the model is enhanced by the introduction of the weighted subgraphs. The major steps of the GT process are shown in **Figure 1**.

2.2.5 Graph convolution

After establishing the meta-path Q_p , the graph convolution process is performed, and atomic information is passed as

$$f(X^{(l)}, Q_p) = \sigma(\hat{D}^{-\frac{1}{2}} \hat{Q}_p \hat{D}^{-\frac{1}{2}} X^{(l)} W^{(l)}), \quad (5)$$

where f is the function of graph convolution. $X \in \mathbb{R}^{N \times F}$ is defined as an atomic feature matrix, where N is the total number of nodes in the graph and F is the dimensionality of the node features. l is the iteration counter for f , with $l \in \{1 \dots L\}$ representing the depth of the convolutional layers, \hat{Q}_p is self-attended meta-path matrix, with $\hat{Q}_p = Q_p + I$, where I is the identity matrix, and \hat{D} is the diagonal node degree matrix of \hat{Q}_p . The L -iteration message passing is designed with

$$X^{(l+1)} = f(X^{(l)}, Q_p). \quad (6)$$

In the graph convolution process, each iteration l captures the local neighborhood information up to an l -hop distance through the meta-path Q_p , aggregating and transforming features $X^{(l)}$ at each step to learn more complex and higher-order representations $X^{(l+1)}$ of the graph structure.

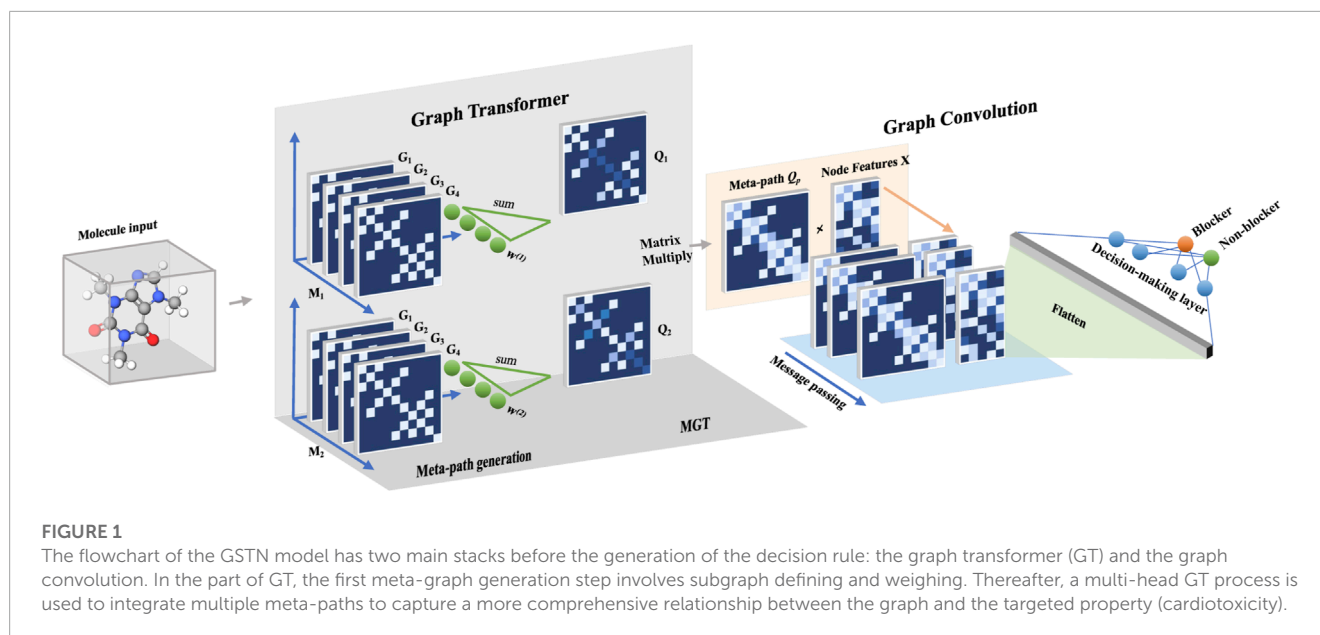
2.2.5.1 Decision making

The two-dimensional matrix X is expanded into a one-dimensional vector V by flattening it according to the row-prime reshaping scheme. The resulting vector V with the shape of $V \in \mathbb{R}^{1 \times N \times D}$, where N is the number of rows and d is the number of columns in matrix X . The flattened vector V is used for further computations. We designed a neural network NN, with weight matrices that are shaped as $\{\mathbb{R}^{(N \times D, h_1)}, \dots, \mathbb{R}^{(h_n, 2)}\}$, h_n is a hidden dimension of NN, and $n + 1$ is the number of neurons layers.

2.3 Baseline models

To validate the improvement of the proposed model, several baseline models have been constructed. Since the GSTN model is built on the graph transformer network (GTN) model, a GTN model (Yun et al., 2019), which is actually the GSTN model without the predefined substructures, is directly compared with it. As the original graph neural network model, the molecular graph convolutional neural network (MGCNN) is used as another baseline model. In this study, an MGCNN model with two graph convolution layers and the accompanying batch normalization layers for feature extraction and fully connected layers for decision rule generation (Wu et al., 2018) was constructed. Another pervasively used molecular coding method in QSAR is the extended connectivity fingerprint (ECFP). For comparison, the ECFP (1,024 bits, diameter = 4) is input to the support vector machine (SVM) to construct a conventional QSAR model.

All of the baseline models were developed in the Python programming language by using the machine learning library Scikit-learn and the open-source cheminformatics toolkit RDKit (<http://www.rdkit.org>). All datasets and model implementations are available in our GitHub repository (https://github.com/huijia-wang/hERG_CHEMBL240). The preprocessed ChEMBL data and scripts for building models are also provided.



Trained with the same *hERG-DB*, a structure-based prediction with a LASSO regularized SVM model proposed by Creanza et al. (2021) is used as an additional reference outside of the QSAR modeling. The pipeline proposed by Creanza et al. differs in the input, which integrates docking scores and protein–ligand interaction fingerprints, while the SVM model was used to project the features to generate the classifying boundary.

2.4 Validation and evaluation

In this study, each model was trained with 10-fold cross validation and summarized with the following statistics: accuracy, precision, F1-score, recall, and area under the receiver operating characteristic curve (AUC-ROC).

$$\text{Accuracy} = \frac{TP + TN}{TP + TN + FP + FN}, \quad (7)$$

$$\text{Precision} = \frac{TP}{TP + FP}, \quad (8)$$

$$\text{Recall (TPR)} = \frac{TP}{TP + FN}, \quad (9)$$

$$\text{F1 - score} = \frac{2\text{RecallPrecision}}{\text{Recall} + \text{Precision}}. \quad (10)$$

Here, *TP*, *TN*, *FP*, and *FN* are true positive, false positive, false negative, and true negative, respectively.

3 Results

3.1 Comprehensive evaluation of thresholding schemes

3.1.1 Single threshold

GSTN was trained with three single thresholds: $IC_{50} = 1, 10, \text{ and } 20 \mu\text{M}$. The performance is shown in Figure 2.

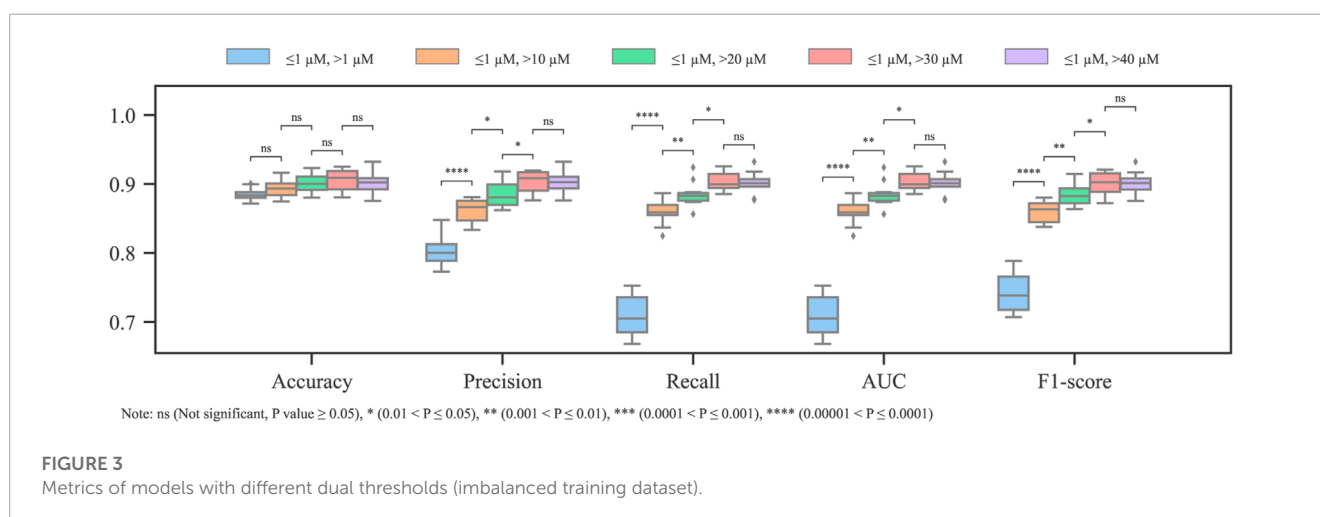
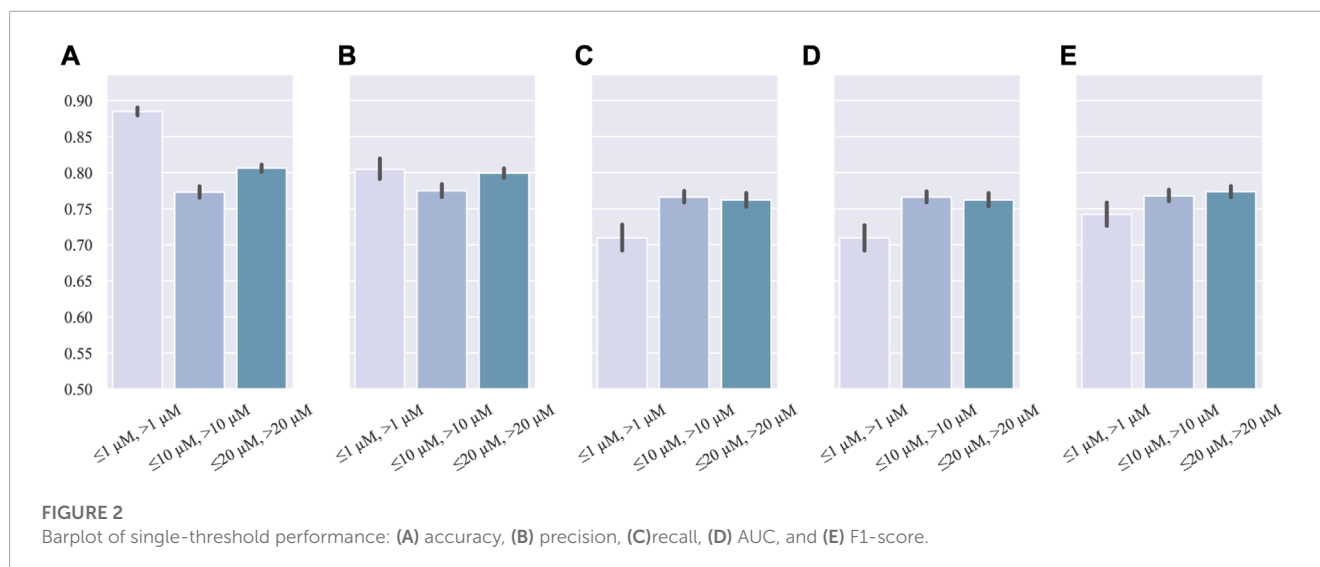
Even though the $1 \mu\text{M}$ threshold had the highest accuracy, its recall is lower than those of other thresholds. Additionally, in the metric of F1-score, which is suitable for assessing the performance of a model in an imbalanced dataset, $IC_{50} = 1 \mu\text{M}$ has the lowest performance. In addition, all the single-threshold F1-score values are lower than 0.80. Given the discrepancy in the precision and recall, it can be inferred that the single-threshold scheme hinders the model from learning the essential features of cardiotoxicity, which is exactly the property pursued in modeling.

3.1.2 Dual threshold

The molecules with IC_{50} values in between the active and inactive thresholds can still be regarded as weak blockers and cause ambiguity in cardiotoxicity prediction, which can be generally mitigated by introducing a dual-threshold scheme. In this part, the dual thresholds will be discussed concerning 1) the effect of the different combinations of the active and inactive thresholds on removing the ambiguity of the original dataset and 2) the influence of data imbalance on the model.

For the first term, after fixing the activity threshold ($IC_{50} = 1 \mu\text{M}$), different inactive thresholds ($IC_{50} = 10, 20, 30, \text{ and } 40 \mu\text{M}$) were investigated. According to the Tanimoto similarity coefficient, the diversity values of all the datasets (including the original one) range between 0.768 and 0.783. Hence, it is unlikely that the removal of ambiguous molecules has a significant impact on the diversity of the dataset. As shown in Figure 3, except for the accuracy, which is substantially biased by the data imbalance, the other metrics have significant improvement after replacing the single threshold with the dual threshold. The combinations $[1, 30] \mu\text{M}$ and $[1, 40] \mu\text{M}$ have significantly better outcomes than the others according to the *t-test*, while no significant difference exists between them.

As the inactive threshold increases, fewer molecules can be attributed as non-blockers. Consequently, the resultant dataset in



use becomes more balanced (Table 1). These results confirm that the weak blockers introduce ambiguity in the cardiotoxicity model, and the ambiguity can be greatly mitigated by weak blocker removal. In addition, the recall has the largest improvement from single threshold to dual threshold (refer to the step change of recall from single to dual threshold of $[1, 10] \mu\text{M}$ in Figure 3), it can be inferred that the ambiguity is more impeditive for the model to generate representative features for the blockers.

By balancing the number of blocker and non-blocker samples according to different dual thresholds, the influence of data imbalance was further investigated. In detail, for every inactive threshold, 1,295 non-blockers were selected randomly from the non-blocker class, and the number of the blockers class was constant at 1,295 (refer to Table 1 for the details). Regarding the model performance with the balanced datasets, similarly, the improvement in performance by introducing a dual threshold and enlarging the gap between the inactive and the active ones can be seen. However, the performance reaches the plateau earlier than the imbalanced one at $[1, 20] \mu\text{M}$ (Figure 4). Combining the observations in both the balanced and imbalanced datasets, the effect of the mitigation

of ambiguity from the training dataset is a positive factor and is independent of the data balancing problem.

Metric-wise cross comparisons between the imbalanced and balanced datasets are shown in Supplementary Figure S2 in the Supplementary Material, from which it can be confirmed that the adverse impact of the data imbalance is trivial. Intriguingly, the performance of the model generated with the balanced datasets is generally more stable than those generated with the imbalanced datasets in terms of the lengths of the bars and whiskers. Therefore, it is safe to conclude that the removed decoys (non-blockers) are informative for the generalizability of the model. Due to the insignificant differences between the $[1, 30] \mu\text{M}$ and the $[1, 40] \mu\text{M}$ in model performances, the question that which dual threshold is the most appropriate remains open at this point.

3.1.3 Validation with FDA-approved drugs

The FDA-approved drugs contain 45 compounds that appear in the *hERG-DB*, while the other five compounds are outside of

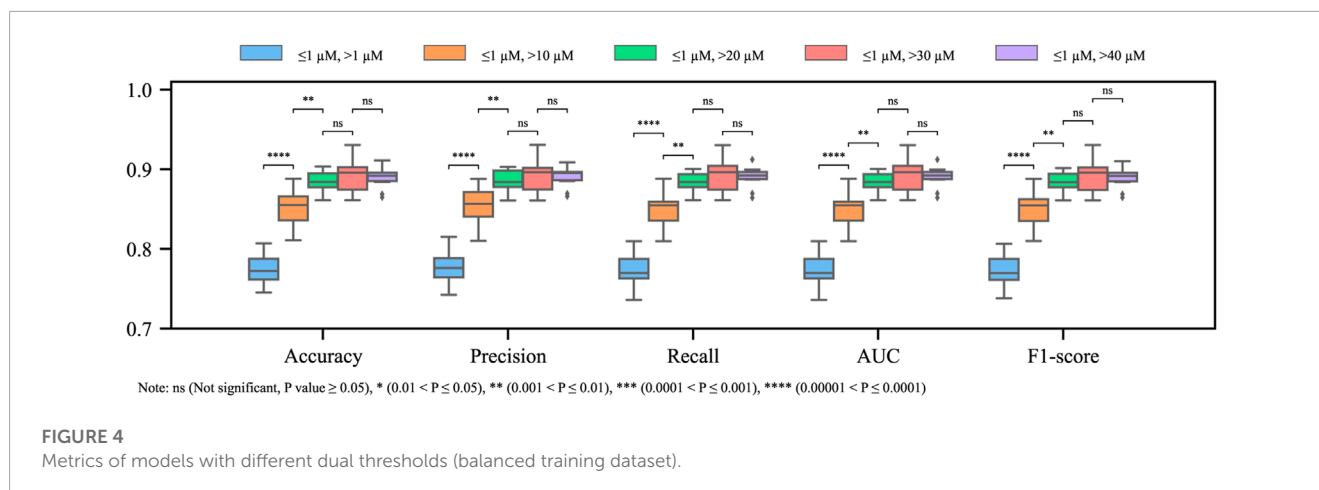


FIGURE 4
Metrics of models with different dual thresholds (balanced training dataset).

the database. Noteworthy, as the non-active threshold increases, the number of undefined drugs, which are outside of the training set, increases (Table 2). These 50 FDA-approved drugs serve as an additional evaluation of the different thresholding schemes for the proposed method. Table 2 summarizes the results of GSTN models with different thresholds. Each colored block corresponds to the results with a thresholding scheme, and the first and second columns in each block show the reference with the corresponding threshold and the prediction of the GSTN model. Results in red font indicate false predictions. In addition to the five compounds which are outside of the *hERG-DB*, another four compounds are outside of the training set in the 10th-fold validation, the trained model of which is used to test the 50 drugs. These nine drugs are marked in **bold** and *italic* in Table 2. For the undefined ones due to the dual thresholds (marked as “-”), predictions of the corresponding models are supplied for further confirmation.

First, since the over-fitting has been abolished by the bias introduced by the subgraphs, data leakage does not cause a nearly perfect prediction in most cases except the [1,30] μM scheme. After changing the single-threshold scheme to the dual one, there is a substantial improvement. As the signal threshold is not capable of identifying some blockers (cisapride, sertindole, etc.), by using the [1,10] μM scheme, most of the undetected blockers can be picked up correctly. This observation suggests that by removing the weak blockers, the model becomes more sensitive to the blockers. Combined with the similar observation in the dual threshold that the ambiguity is more impeditive for the model to generate representative features for the blockers, it is safe to conclude that the dual-threshold scheme is necessary for a sensitive blocker predictor.

The model performance peaks at the [1, 30] μM scheme, with which all classifiable drugs can be recognized correctly. Regarding the nine external drugs, none of the thresholding schemes except for the [1, 30] μM can predict the blocker *quinidine* correctly. On the other hand, the adverse effect of the excessive removal of the non-active molecules can be seen in the results of the [1, 40] μM threshold. False prediction happens in both the blocker (*quinidine*) and the decoy classes (*epinastine* and *ofloxacin*), suggesting that the generalizability of the model is impaired by the removal. Focusing on the undefined drugs that did not appear in the training dataset, we notice that the mean IC_{50} values of the blocker and non-blocker

prediction with the [1, 30] μM scheme are 4.17 and 10.14 μM (t -test $p = 0.05$), respectively. On the other side, those with the [1, 40] μM scheme are 9.16 and 11.04 (t -test $p = 0.57$), respectively. It suggests that the model with the [1, 30] μM scheme tends to draw a cleaner boundary for the two classes. Piecing up the results of the *hERG-DB* and this partially external dataset with FDA-approved drugs, a dual threshold of [1, 30] μM is the most appropriate for cardiotoxicity modeling.

For the nine external drugs in this dataset, the applicability domain (AD) is used to visualize and identify the molecules that need substantial extrapolation of the model. The latent features ($\mathbb{R}^D, D = 64$) generated by the Graph convolution are used as the molecular fingerprint to visualize the uniformity of the training data and the external drugs (Figure 5) by using the t -distributed stochastic neighbor embedding (t -SNE). Since the AD is used to ensure confident model prediction, chemical leverage is defined by the following equation:

$$h_i = x_i(X^T X)^{-1} x_i^T. \quad (11)$$

The $x_i \in \mathbb{D}$ represents the latent features of an external molecule, and the $X \in \mathbb{R}^{M \times D}$ represents the fingerprints (row vector) of the training dataset (M the number of the molecules in the training dataset, $M = 3347$). Based on the corresponding criterion, a molecule with an h value that is larger than $3D/M$ is considered chemically different from the training dataset. Based on this idea, none of the nine drugs is identified and deemed far apart from the training dataset.

3.2 Predefined domain subgraphs

The effect of predefined subgraphs is investigated by looking into the learnable weights $W^{(1)}$ and $W^{(2)}$. Figure 6 shows a direct comparison of different predefined subgraph combinations; Figure 7 shows the performance of the models with a different subgraph bias. 2T-GSTN is the model with all-atoms and Murcko subgraphs; 3T-GSTN is with all-atoms, Murcko, and aromatic ring subgraphs; and 4T-GSTN is with all predefined subgraphs. Although no significant improvement, a slight improvement over the graph

TABLE 2 Results of FDA-approved drugs on different thresholds.

No.	FDA drug name	hERG IC50 (M)	Label ($\leq 1, > 1 \mu$ M threshold)	GSTN prediction	Label ($\leq 1, > 10 \mu$ M threshold)	GSTN prediction	Label ($\leq 1, > 20 \mu$ M threshold)	GSTN prediction	Label ($\leq 1, > 30 \mu$ M threshold)	GSTN prediction	Label ($\leq 1, > 40 \mu$ M threshold)	GSTN prediction
1	Desmethylnastemizole	0.001	Blocker	Blocker	Blocker	Blocker	Blocker	Blocker	Blocker	Blocker	Blocker	Blocker
2	Cisapride	0.0094	Blocker	Non-blocker	Blocker	Blocker	Blocker	Blocker	Blocker	Blocker	Blocker	Blocker
3	Astemizole	0.01	Blocker	Blocker	Blocker	Blocker	Blocker	Blocker	Blocker	Blocker	Blocker	Blocker
4	Dofetilide	0.01	Blocker	Blocker	Blocker	Blocker	Blocker	Blocker	Blocker	Blocker	Blocker	Blocker
5	Sertindole	0.01	Blocker	Non-blocker	Blocker	Blocker	Blocker	Blocker	Blocker	Blocker	Blocker	Blocker
6	Haloperidol	0.0302	Blocker	Blocker	Blocker	Blocker	Blocker	Blocker	Blocker	Blocker	Blocker	Blocker
7	Droperidol	0.0324	Blocker	Blocker	Blocker	Blocker	Blocker	Blocker	Blocker	Blocker	Blocker	Blocker
8	Verapamil	0.141	Blocker	Blocker	Blocker	Blocker	Blocker	Blocker	Blocker	Blocker	Blocker	Blocker
9	Risperidone	0.151	Blocker	Non-blocker	Blocker	Blocker	Blocker	Blocker	Blocker	Blocker	Blocker	Blocker
10	Halofantrine	0.2	Blocker	Non-blocker	Blocker	Blocker	Blocker	Blocker	Blocker	Blocker	Blocker	Blocker
11	Terfenadine	0.2	Blocker	Blocker	Blocker	Blocker	Blocker	Blocker	Blocker	Blocker	Blocker	Blocker
12	Clozapine	0.324	Blocker	Non-blocker	Blocker	Blocker	Blocker	Blocker	Blocker	Blocker	Blocker	Blocker
13	Quinidine	0.324	Blocker	Non-blocker	Blocker	Non-blocker	Blocker	Non-blocker	Blocker	Blocker	Blocker	Non-blocker
14	Thioridazine	0.363	Blocker	Non-blocker	Blocker	Blocker	Blocker	Blocker	Blocker	Blocker	Blocker	Blocker
15	Bepridil	0.55	Blocker	Non-blocker	Blocker	Blocker	Blocker	Blocker	Blocker	Blocker	Blocker	Blocker
16	Vesnarinone	1.1	Non-blocker	Non-blocker	-	Non-blocker	-	Non-blocker	-	Non-blocker	-	Non-blocker
17	Azimilide	1.41	Non-blocker	Non-blocker	-	Non-blocker	-	Blocker	-	Blocker	-	Blocker
18	Mibefradil	1.45	Non-blocker	Non-blocker	-	Non-blocker	-	Blocker	-	Blocker	-	Blocker
19	Fluoxetine	1.51	Non-blocker	Non-blocker	-	Non-blocker	-	Blocker	-	Blocker	-	Non-blocker
20	Ketoconazole	1.91	Non-blocker	Non-blocker	-	Non-blocker	-	Non-blocker	-	Non-blocker	-	Blocker
21	Alosetron	3.24	Non-blocker	Non-blocker	-	Non-blocker	-	Non-blocker	-	Non-blocker	-	Non-blocker
22	Sildenafil	3.31	Non-blocker	Non-blocker	-	Non-blocker	-	Non-blocker	-	Non-blocker	-	Blocker
23	Imipramine	3.39	Non-blocker	Non-blocker	-	Blocker	-	Non-blocker	-	Non-blocker	-	Non-blocker
24	Flecainide	3.89	Non-blocker	Non-blocker	-	Non-blocker	-	Non-blocker	-	Non-blocker	-	Blocker
25	Citalopram	3.98	Non-blocker	Non-blocker	-	Blocker	-	Blocker	-	Non-blocker	-	Blocker
26	Nortriptyline	4.47	Non-blocker	Non-blocker	-	Non-blocker	-	Non-blocker	-	Blocker	-	Non-blocker
27	Mosapride	4.8	Non-blocker	Non-blocker	-	Non-blocker	-	Non-blocker	-	Blocker	-	Blocker
28	Mefloquine	5.62	Non-blocker	Non-blocker	-	Non-blocker	-	Non-blocker	-	Blocker	-	Blocker

(Continued on the following page)

TABLE 2 (Continued) Results of FDA-approved drugs on different thresholds.

29	Cocaine	7.24	Non-blocker	Non-blocker	-	Non-blocker	-	Non-blocker	-	Blocker	-	Blocker
30	Perhexiline	7.76	Non-blocker	Non-blocker	-	Non-blocker	-	Non-blocker	-	Non-blocker	-	Non-blocker
31	Ranolazine	8.03	Non-blocker	Non-blocker	-	Non-blocker	-	Non-blocker	-	Non-blocker	-	Blocker
32	Amitriptyline	10	Non-blocker	Non-blocker	-	Non-blocker	-	Non-blocker	-	Non-blocker	-	Non-blocker
33	Nitrendipine	10	Non-blocker	Non-blocker	-	Blocker	-	Non-blocker	-	Non-blocker	-	Non-blocker
34	Carvedilol	10.5	Non-blocker	Non-blocker	Non-blocker	Non-blocker	-	Blocker	-	Blocker	-	Blocker
35	Dolasetron	12	Non-blocker	Non-blocker	Non-blocker	Non-blocker	-	Non-blocker	-	Non-blocker	-	Non-blocker
36	Diltiazem	17.4	Non-blocker	Non-blocker	Non-blocker	Non-blocker	-	Non-blocker	-	Non-blocker	-	Blocker
37	Sparfloxacin	18.2	Non-blocker	Non-blocker	Non-blocker	Non-blocker	-	Non-blocker	-	Non-blocker	-	Non-blocker
38	Pilsicainide	20.4	Non-blocker	Non-blocker	Non-blocker	Non-blocker	Non-blocker	Non-blocker	-	Non-blocker	-	Non-blocker
39	Chlorpheniramine	20.9	Non-blocker	Non-blocker	Non-blocker	Blocker	-	Non-blocker	-	Non-blocker	-	Non-blocker
40	Diphenhydramine	26.9	Non-blocker	Non-blocker	Non-blocker	Non-blocker	-	Blocker	-	Non-blocker	-	Blocker
41	Cetirizine	30.2	Non-blocker	Non-blocker	Non-blocker	Non-blocker	-	Non-blocker	-	Non-blocker	-	Blocker
42	Nifedipine	51	Non-blocker	Non-blocker	Non-blocker	Non-blocker	Non-blocker	Non-blocker	Non-blocker	Non-blocker	Non-blocker	Non-blocker
43	<i>Disopyramide</i>	91.2	Non-blocker	Non-blocker	Non-blocker	Non-blocker	Non-blocker	Non-blocker	Non-blocker	Non-blocker	Non-blocker	Non-blocker
44	<i>Epinastine</i>	100	Non-blocker	Non-blocker	Non-blocker	Non-blocker	Non-blocker	Non-blocker	Non-blocker	Non-blocker	Non-blocker	Blocker
45	Moxifloxacin	129	Non-blocker	Non-blocker	Non-blocker	Non-blocker	Non-blocker	Non-blocker	Non-blocker	Non-blocker	Non-blocker	Non-blocker
46	<i>Lidocaine</i>	142	Non-blocker	Non-blocker	Non-blocker	Non-blocker	Non-blocker	Non-blocker	Non-blocker	Non-blocker	Non-blocker	Non-blocker
47	<i>Mepivacaine</i>	156	Non-blocker	Non-blocker	Non-blocker	Non-blocker	Non-blocker	Non-blocker	Non-blocker	Non-blocker	Non-blocker	Non-blocker
48	<i>Trimethoprim</i>	240	Non-blocker	Non-blocker	Non-blocker	Non-blocker	Non-blocker	Non-blocker	Non-blocker	Non-blocker	Non-blocker	Blocker
49	<i>Nicotine</i>	245	Non-blocker	Non-blocker	Non-blocker	Non-blocker	Non-blocker	Non-blocker	Non-blocker	Non-blocker	Non-blocker	Non-blocker
50	<i>Ofloxacin</i>	1,410	Non-blocker	Non-blocker	Non-blocker	Non-blocker	Non-blocker	Non-blocker	Non-blocker	Non-blocker	Non-blocker	Non-blocker
Accuracy			86.0%	93.8%	89.3%	100.0%	87.5%					

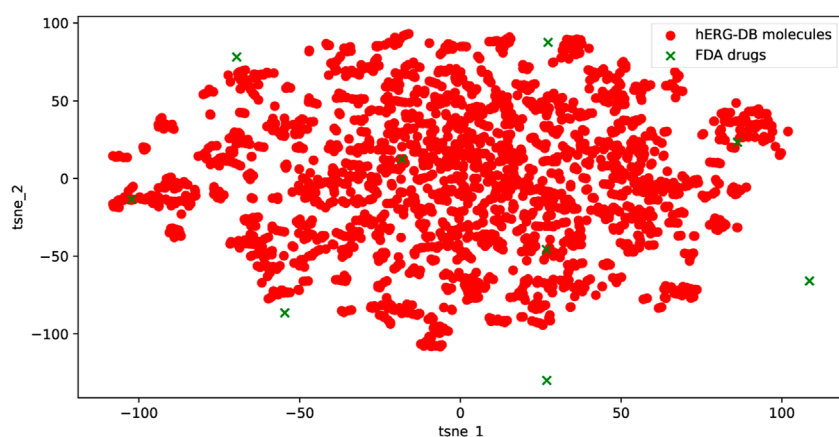


FIGURE 5

Chemical space of the training and the nine external drugs using t-SNE based on the latent features of the proposed model. The uniformity of the training and the external drugs can be seen.

transformer (1T-GSTN) in the accuracy and F1-score can be seen in the 4T-GSTN model. In **Figure 6**, the learnable weights of different subgraphs combinations are averaged over the 10-fold cross validation, which suggests the necessity of importing the predefined substructures.

Noteworthy, 2T-GSTN shows an inferior performance when compared to others. It may be caused by the high similarity between the scaffold and the molecule. On the other hand, the necessity of the ring and heteroatom can be seen in **Figure 6**. The importance of the heteroatom is consistent with the findings of previous studies (Creanza et al. (2021); Moorthy et al. (2021); Kim and Nam (2020)).

3.3 Performance comparison

By applying the 10-fold cross validation to both the GSTN model and the baseline models, a comparison with the baseline models is summarized in **Figure 8**. Comparing the GSTN model with the one based on MGCNN, the manipulation of the meta-path show its superiority in representing the molecular graph as a heterogeneous graph. The superiority of the GSTN model can be also seen in the time duration of training. Because of the parallel processing in the GT process, the training time is 40 s (100 epochs) in our model, while that in the MGCNN model is 640 s using a MacBook Pro with a 12-core CPU and an 18-core GPU.

With respect to the other baseline model, the SVM model input with the ECFP, its inferior performance compared to that of the GSTN model suggests that the global context of the substructures, which is neglected by the ECFP, is beneficial for the cardiotoxicity modeling.

Albeit with the same training dataset, the input of the model proposed by Creanza et al. is more microscopic and deterministic. Docking scores of the *hERG* central cavity and the protein–ligand interaction fingerprint are integrated as the input. Although the validation scheme is not clear in Creanza's study, given that similar dual-threshold schemes are used and the 10-fold cross validation in our study is a standard way for model evaluation, it is plausible to say

that the GSTN model has a better performance in terms of accuracy and AUC values.

4 Discussion

4.1 On the activity cliff corner

The efficacy of the GSTN model in harnessing the activity cliff problem, which is a nuisance in QSAR modeling, was investigated in this section by comparing the proposed model with the baseline models. The comparison centered on the common/unique Murcko scaffold is conducted. The Murcko scaffold represents the union of the rings and liners in a molecule (Bemis and Murcko, 1996). Although it may be insufficient in highlighting all the important features, the Murcko scaffold is generally used to find the structure similarity of molecules. Therefore, the investigation is discussed in the following three different directions.

4.1.1 Common Murcko scaffold with different properties

Common Murcko scaffold with different properties means that, albeit with the same Murcko scaffold, molecules can be either blockers or non-blockers. We summarized six major groups in **Table 3**, from which it can be confirmed that the GSTN model handles the activity cliff better than the baseline models. For example, albeit with balanced numbers of blockers and non-blockers in group 1, the MGCNN and ECFP with SVM models fail at recognizing the blocker in the test dataset. Intriguingly, although being trained with the non-blockers only, the GSTN model is able to pick up the subtle difference between blockers and non-blocker, for which reason the GSTN model can recognize the blocker in group 2 while the other two models fail to do so.

Given that ECFP with the SVM model showed no high sensitivity in predicting the molecules with the same Murcko but different properties, it is safe to conclude that the GSTN model

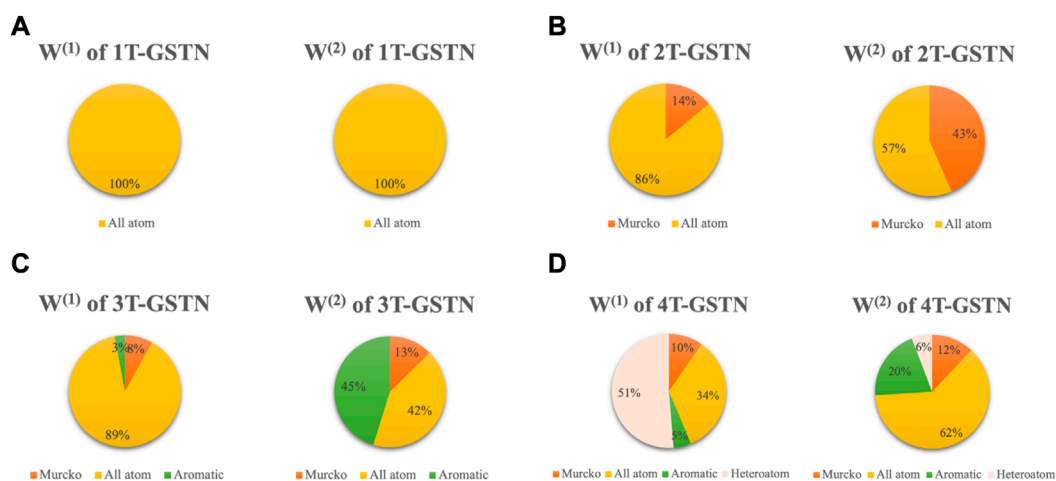


FIGURE 6

Pie plot of different combinations of subgraphs. Areas of the sectors correspond to the values of the weight of the predefined subgraphs. (A): 1T-GSTN with all atoms predefined domain subgraph; (B): 2T-GSTN with all-atoms and Murcko subgraphs; (C): 3T-GSTN with all-atoms, Murcko, and aromatic ring subgraphs; and (D): 4T-GSTN with all predefined subgraphs.

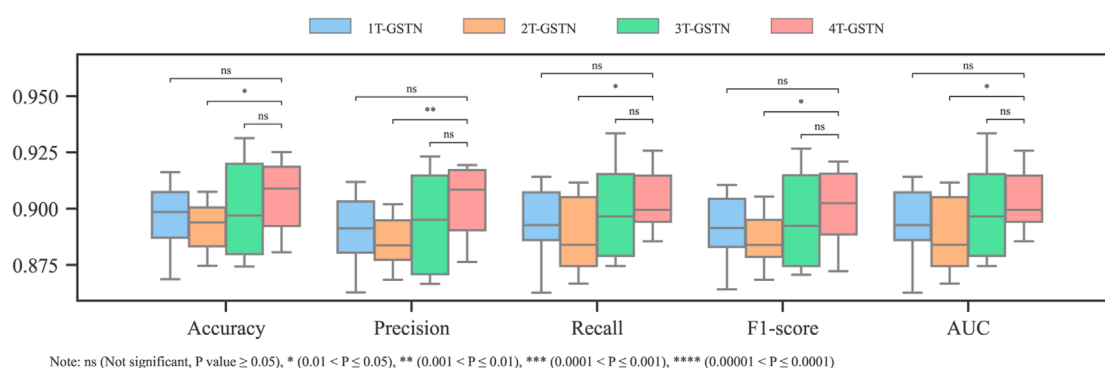


FIGURE 7

Performance of different combinations of subgraphs.

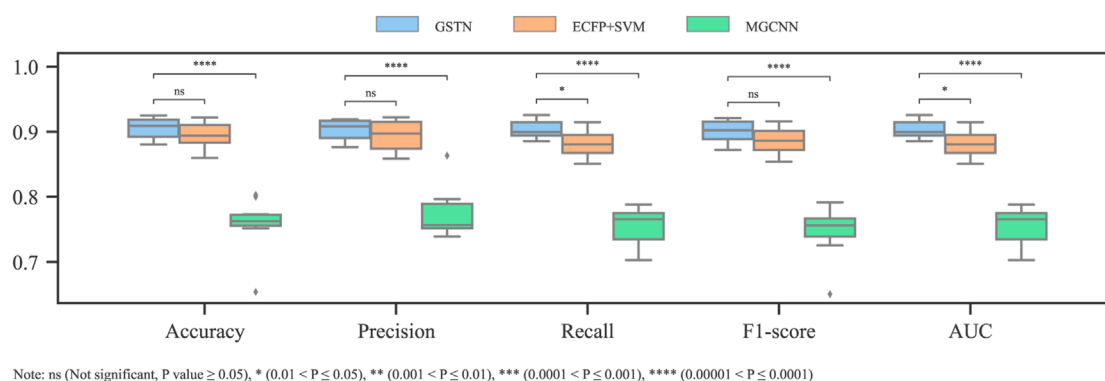


FIGURE 8

Comparison performance with baseline models.

TABLE 3 Common Murcko scaffold molecules with different properties.

Group	No.	Canonical_smiles	Murcko	Class	GSTN	MGCNN	ECFP + SVM	Test/training
	1	OC(=O)c1cccc(cc1)C2 = CC3(CCNCC3)Oe4cccc24	C1 = C(c2cccc2)c2cccc2OC12CCNCCC2	Non-blocker				Training
	2	C1C2(CCN1)Oe3cccc3C(=C2)e4cccc4	C1 = C(c2cccc2)c2cccc2OC12CCNCCC2	Blocker				Training
	3	Oc1ccc(cc1)C2 = CC3(CCNCC3)Oe4cccc24	C1 = C(c2cccc2)c2cccc2OC12CCNCCC2	Blocker				Training
	4	CCN(CC)C(=O)c1cccc(cc1)C2 = CC3(CCNCC3)Oe4cccc24)c(O)c1	C1 = C(c2cccc2)c2cccc2OC12CCNCCC2	Non-blocker				Training
	5	CCN(CC)C(=O)c1cccc(cc1)C2 = CC3(CCN(CC3)C(=O)O)Oe4cccc24	C1 = C(c2cccc2)c2cccc2OC12CCNCCC2	Non-blocker				Training
	6	Cc1ccc(cc1)C2 = CC3(CCNCC3)Oe4cccc24	C1 = C(c2cccc2)c2cccc2OC12CCNCCC2	Blocker				Training
	7	CCN(CC)C(=O)c1cccc(cc1)C2 = CC3(CCNCC3)Oe4ccc(O)ccc24	C1 = C(c2cccc2)c2cccc2OC12CCNCCC2	Non-blocker				Training
	8	COc1ccc(cc1)C2 = CC3(CCNCC3)Oe4cccc24	C1 = C(c2cccc2)c2cccc2OC12CCNCCC2	Blocker				Training
	9	CCN(CC)C(=O)c1cccc(cc1)C2 = CC3(CCN(C)CC3)Oe4cccc24	C1 = C(c2cccc2)c2cccc2OC12CCNCCC2	Blocker				Training
	10	CNC(=O)c1cccc(cc1)C2 = CC3(CCNCC3)Oe4cccc24	C1 = C(c2cccc2)c2cccc2OC12CCNCCC2	Non-blocker				Training
	11	CCN(CC)C(=O)c1cccc(cc1)C2 = CC3(CCNCC3)Oe4cccc24)c(F)c1	C1 = C(c2cccc2)c2cccc2OC12CCNCCC2	Blocker				Training
	12	CCN(CC)C(=O)c1cccc(cc1)C2 = CC3(CCNCC3)Oe4ccc(O)c24	C1 = C(c2cccc2)c2cccc2OC12CCNCCC2	Non-blocker				Training
	13	FC(F)F)c1cccc(cc1)C2 = CC3(CCNCC3)Oe4cccc24	C1 = C(c2cccc2)c2cccc2OC12CCNCCC2	Blocker				Training
	14	COC(=O)c1cccc(cc1)C2 = CC3(CCNCC3)Oe4cccc24	C1 = C(c2cccc2)c2cccc2OC12CCNCCC2	Blocker				Training
	15	N#Cc1ccc(cc1)C2 = CC3(CCNCC3)Oe4cccc24	C1 = C(c2cccc2)c2cccc2OC12CCNCCC2	Blocker				Training
	16	CCN(CC)C(=O)c1cccc(cc1)C2 = CC3(CCNCC3)Oe4cccc24	C1 = C(c2cccc2)c2cccc2OC12CCNCCC2	Blocker	Pass	Fail	Fail	Test
Group	No.	Canonical_smiles	Murcko	Class	GSTN	MGCNN	ECFP + SVM	Test/training
	1	CC(C)S(=O)(=O)N[C@H]1CN(C)C[C@@H]1c2ccc(cc2)c3cccc(c3)S(=O)(=O)C	c1ccc(-c2ccc(C3CCNC3)cc2)cc1	Non-blocker				Training
	2	CC(C)S(=O)(=O)N[C@H]1CN(C)C[C@@H]1c2ccc(cc2)c3cccc(cc3)NS(=O)(=O)C#N	c1ccc(-c2ccc(C3CCNC3)cc2)cc1	Non-blocker				Training
	3	CCN1C[C@H](NS(=O)(=O)C(C)C)[C@H](C1)c2ccc(cc2)c3ccc(cc3)C#N	c1ccc(-c2ccc(C3CCNC3)cc2)cc1	Blocker	Pass	Fail	Fail	Test
Group	No.	Canonical_smiles	Murcko	Class	GSTN	MGCNN	ECFP + SVM	Test/training
	1	CC#CC(CCC(=O)O)c1ccc(Oc2ccc(cc2OC(F)C(F)F)c1	c1ccc(Oc2cccc2)cc1	Non-blocker				Training
	2	CS(=O)(=O)Nc1ccc(cc1O)c2cccc2 N+ [O-]	c1ccc(Oc2cccc2)cc1	Non-blocker				Training
	3	CC(C(=O)O)c1cccc(Oc2cccc2)c1	c1ccc(Oc2cccc2)cc1	Non-blocker				Training
	4	CNCc1ccc(O)c1ccc(Oc2ccc(cc1)c(Cl)c2	c1ccc(Oc2cccc2)cc1	Blocker				Training
	5	CNC(C)c1cccc(OC)cc1Oc2ccc(Cl)c(Cl)c2	c1ccc(Oc2cccc2)cc1	Blocker				Training
	6	CC(N)(C)c1cccc(Oc2ccc(Cl)c(Cl)c2	c1ccc(Oc2cccc2)cc1	Blocker				Training
	7	CNCc1ccc(Br)cc1Oc2ccc(Cl)c(Cl)c2	c1ccc(Oc2cccc2)cc1	Blocker				Training

(Continued on the following page)

TABLE 3 (Continued) Results of FDA-approved drugs on different thresholds. Common Murcko scaffold molecules with different properties.

Group	No.	Canonical_smiles	Murcko	Class	GSTN	MGCNN	ECFP + SVM	Test/training
	8	<chem>COc1ccc(CN(C)C)c(Oc2ccc(C)C)c1</chem>	<chem>c1ccc(Oc2ccc(C)C)c1</chem>	Blocker				Training
	9	<chem>CNCc1ccc(C)cc1Oc2ccc(C)cc2</chem>	<chem>c1ccc(Oc2ccc(C)C)c1</chem>	Blocker	Pass	Fail	Pass	Test
3	10	<chem>CNCc1ccc(C)cc1Oc2ccc(F)C(F)F</chem>	<chem>c1ccc(Oc2ccc(C)C)c1</chem>	Blocker	Pass	Pass	Pass	Test
Group	No.	Canonical_smiles	Murcko	Class	GSTN	MGCNN	ECFP + SVM	Test/training
	1	<chem>CC(C)S(=O)(=O)N[C@@H]1CN(C)C[C@@H]1c2ccc(cc2)c3ccc(F)nc3</chem>	<chem>c1cncc(-c2ccc(C3CCNC3)cc2)c1</chem>	Blocker				Training
	2	<chem>CC(C)S(=O)(=O)N[C@@H]1CN(C)C[C@@H]1c2ccc(cc2)c3ccnc3</chem>	<chem>c1cncc(-c2ccc(C3CCNC3)cc2)c1</chem>	Non-blocker	Pass	Fail	Pass	Test
	3	<chem>CC(C)S(=O)(=O)N[C@@H]1COC[C@@H]1c2ccc(cc2)c3ncc(F)c3</chem>	<chem>c1cncc(-c2ccc(C3CCOC3)cc2)c1</chem>	Non-blocker				Training
Group	No.	Canonical_smiles	Murcko	Class	GSTN	MGCNN	ECFP + SVM	Test/training
	1	<chem>CN(C)C(=O)c1ccc(c(F)c1)c2ccc3C(=O)N(CCN4CCCC4)CCc3c2</chem>	<chem>O=C1c2ccc(-c3cccc3)cc2CCN1CCN1CCCC1</chem>	Non-blocker				Training
	2	<chem>C[C@@H]1CCCN1CCN2CCc3cc(c3c2 = O)c4ccc(cc4)C#N</chem>	<chem>O=C1c2ccc(-c3cccc3)cc2CCN1CCN1CCCC1</chem>	Blocker				Training
	3	<chem>C[C@@H]1CCCN1CCN2CCc3cc(c3c2 = O)c4ccc(F)cc4</chem>	<chem>O=C1c2ccc(-c3cccc3)cc2CCN1CCN1CCCC1</chem>	Blocker	Pass	Fail	Pass	Test
Group	No.	Canonical_smiles	Murcko	Class	GSTN	MGCNN	ECFP + SVM	Test/training
	1	<chem>FC(F)F)c1ccc(cc1)S(=O)(=O)Nc2ccc(cc2)[C@]34CNC[C@@H]3C4</chem>	<chem>O=S(=O)(Nc1ccc(C23CNC2C3)cc1)c1cccc1</chem>	Blocker				Training
	2	<chem>CN(c1ccc(cc1)[C@]23CNC[C@@H]2C3)S(=O)(=O)c4ccc(cc4)</chem>	<chem>O=S(=O)(Nc1ccc(C23CNC2C3)cc1)c1cccc1</chem>	Non-blocker				Training
	3	<chem>CC(C)c1ccc(cc1)S(=O)(=O)Nc2ccc(cc2)[C@]34CNC[C@@H]3C4</chem>	<chem>O=S(=O)(Nc1ccc(C23CNC2C3)cc1)c1cccc1</chem>	Blocker				Training
	4	<chem>CC(C)c1ccc(cc1)S(=O)(=O)Nc2ccc(cc2)[C@@]34C[C@@H]3CN(CC = C)C4</chem>	<chem>O=S(=O)(Nc1ccc(C23CNC2C3)cc1)c1cccc1</chem>	Blocker	Pass	Pass	Fail	Test

proposed in this work is more capable of picking up the decisive structural features for the cardiotoxicity problem.

4.1.2 Common Murcko scaffold with the same property

Contrarily, a model putting too much weight on the side chains may lead to an over-fitting problem. In this regard, the molecules with the same scaffold and the same cardiotoxicity properties are extracted, as shown in **Table 4**. For the eight major groups shown in **Table 4**, the GSTN recognizes the properties of the test molecules in each group.

4.1.3 Unique Murcko scaffold

It is not unusual that some bioactivity can be largely decided by the chemical scaffold. There is also a portion of molecules in our dataset, whose cardiotoxicity properties can be decided by their scaffolds. Hence, the question “does the local structure-based algorithms (both ECFP and MGCNN) grasp the scaffold information concretely or not?” has a direct impact on their performance in this regard. We, therefore, further investigate the models' performances on the unique Murcko scaffold, which means that no molecule with the same scaffold as the one of interest is used in the training dataset.

From **Table 5**, it can be confirmed that the GSTN model outperforms the two baseline models by a large margin. Of note, the GSTN model also uses a GCN layer to extract and summarize the features of the local structures of the final meta-graph. The superior performance may come from the weighted attention manipulation introduced by the predefined substructures.

4.2 Model interpretability

By visualization of the subgraphs and the resultant Q_p , the GSTN model provides additional information for the compound design. Alongside the four subgraphs, the resultant Q_1 , Q_2 , and the final Q_p were extracted. As a newly generated weighted graph for the subsequent graph convolution, the Q_p is used for model interpretation. Given the differences in the cardiotoxicity property, the molecules of group 2 in **Table 3** are used as an example, and the no. 1, 2, and 3 molecules in **Figure 9** correspond to the molecules with the same group number, respectively.

In each predefined subgraph, different bonds are unified (see the grids for each substructure in **Figure 9**), and the attention of substructure-level heterogeneity is introduced by the multiplication with weights, as can be seen in the Q_1 , Q_2 , and the resultant Q_p . Moreover, the no. 3 molecule (blocker) clearly shows a distinct Q_p from the other two non-blockers. Specifically, albeit with the same scaffold, the resultant connectivity shows different patterns in attention (especially in the connection marked with yellow color).

The grid diagram in **Figure 9** provides a more intuitive view of the model, where the scaffold is indicated by the light blue shadow. Generally, the three molecules have highly similar structures. For example, the sulfonamide functional group is connected to the 7th position of the carbon atoms in the no. 1 and no. 2 molecules, as well as to the 4th carbon atom of the no. 3 molecule. For all this, the model is able to recognize the subtle difference, which is the difference in the substituents of the 23rd carbon atoms, by devoting

sufficient attention to that carbon. In particular, the no. 3 molecule features an alkynyl group located in the paraposition of the benzene ring, while the other two are in the metaposition.

4.3 On the thresholding scheme

The necessity of the dual threshold is reconfirmed in our study. Although a portion of the samples will become undefined, the performance of the prediction is improved significantly. Specifically, the sensitivity to the blocker (recall) is lifted from 0.71 to 0.86 by introducing the [1, 10] μM dual-thresholding scheme and peaks at 0.90 with [1, 30] μM threshold. This improvement is desired in the pre-screen step.

Another concern about the dataset is the data balance. Generally, data balancing is beneficial to minor classes (the class with a smaller number of samples) in deep learning. However, the results of this study show that adverse influence from the mild data imbalance is trivial, and excessive removal of the samples in the decoy classes will impair the generalizability of the model. Based on the aforesaid discussion, the imbalanced dataset with the [1, 30] μM is recommended. This thresholding scheme is consistent with the previous study. In Carvalho's study, it is suggested for a safety margin, the IC_{50} of the non-toxic threshold should be at least 30-fold of the toxic one (Carvalho et al., 2013). Given that the 1 μM is usually used as the threshold of hERG blockers, 30 μM is appropriate to be set as the safety threshold (Li et al., 2017).

The introduction of the predefined substructures shows its advantage over the original graph transformer. Without significant improvement, the GSTN model returns the results with slightly higher median values and smaller variations for all metrics. Given that the bias of the substructures is introduced by the learnable weights, the model is with good scalability, based on which new biochemical insight can be integrated into the model easily.

4.4 On the models

The insufficiency of the ECFP-based model in coping with the unique Murcko scaffold (**Table 5**) can be understood according to the theory of ECFP. By embedding the radius-wise substructure into fixed-length bit strings, the order of the strings is rearranged according to the order of the original identifiers for substructures (Morgan, 1965), for which the long scaffold may not be preserved appropriately, and the connection information between substructures cannot be considered properly in its one-hot vector (Rogers and Hahn, 2010).

The inferior performance of the MGCNN model suggests the necessity of heterogeneity at a certain level. Noteworthy, the heterogeneity is not expressed in the level of chemical bond but in the level of predefined substructure, as explained above, which may be more effective in the biochemical domain.

A computation model that is based on docking scores is regarded as a highly efficient way to assess the hERG–drug interaction (Kouligi et al., 2021). In the reference study, the docking score is further integrated with the protein–ligand interaction fingerprints to characterize the behavior of small molecules in the binding site of target proteins and to elucidate fundamental biochemical processes.

TABLE 4 Common Murcko scaffold molecule with the same properties.

Group	No.	Canonical_smiles	Murcko	Class	GSTN	MGCNN	ECFP + SVM	Test/training
1	1	CCOC(=O)N1CCN(Cc2oc(mm2)c3cc(Cl)ccc3F)/CC1	c1ccc(-c2mnc(CN3CCNCC3)o2)cc1	Non-blocker				Training
	2	CCOC(=O)N1CCN(Cc2oc(mm2)c3cccc(Cl)c3)CC1	c1ccc(-c2mnc(CN3CCNCC3)o2)cc1	Non-blocker	Pass	Fail	Fail	Test
2	1	CN(C)Clcnc1c2ccc(F)cc2)c3ccc(Cl)cc13	c1ccc(-n2cccc3cccc32)cc1	Blocker				Training
	2	CN(C)C(Cl)cnc1c2ccc(F)cc2)c3ccc(Cl)cc13	c1ccc(-n2ccc3cccc32)cc1	Blocker	Pass	Fail	Pass	Test
3	1	CS1ccc2Sc3cccc3N(CCC4CCCCN4O)c2c1	c1ccc2c(c1)Sc1cccc1N2CCC1CCCCN1	Blocker				Training
	2	CN1CCCCC1CCN2c3cccc3Sc4ccc(Cl)c24)[S+](C)[O-]	c1ccc2c(c1)Sc1cccc1N2CCC1CCCCN1	Blocker	Pass	Fail	Fail	Test
4	1	COC(=O)N1CCN(CC1)c2ccc(Nc3ncc(Cl)c(n3)c4ncc5ccccm45)c(OC)c2	c1cm2c(-c3cnc(Nc4ccc(N5CCNCC5)cc4)n3)cn2c1	Non-blocker				Training
	2	COc1cc(ccc1Nc2ncc(Cl)c(n2)c3ncc4ccccn34)N5CCN(Cc5)C(=O)N	c1cm2c(-c3cnc(Nc4ccc(N5CCNCC5)cc4)n3)cn2c1	Non-blocker				Training
3	COc1cc(ccc1Nc2ncc(Cl)c(n2)c3ncc4ccccn34)N5CCN(Cc5)S(=O)(=O)C	c1cm2c(-c3cnc(Nc4ccc(N5CCNCC5)cc4)n3)cn2c1	Non-blocker	Pass	Fail	Pass	Test	
5	1	FC(F)(F)c1cccc1C(=O)N2CCCC(Cc3cccc3)CC2	O=C(c1cccc1)N1CCC(Cc2cccc2)CC1	Non-blocker				Training
	2	Cc1cccc1C(=O)N2CCCC(Cc3cccc3)CC2	O=C(c1cccc1)N1CCC(Cc2cccc2)CC1	Non-blocker				Training
3	Clc1cccc1C(=O)N2CCCC(Cc3cccc3)CC2	O=C(c1cccc1)N1CCC(Cc2cccc2)CC1	Non-blocker				Training	
4	Fc1cccc1C(=O)N2CCCC(Cc3cccc3)CC2	O=C(c1cccc1)N1CCC(Cc2cccc2)CC1	Non-blocker				Training	
5	COc1cccc1C(=O)N2CCCC(Cc3cccc3)CC2	O=C(c1cccc1)N1CCC(Cc2cccc2)CC1	Non-blocker	Pass	Fail	Pass	Test	
6	1	CC1(C)C2cccc(CN3CCC4(Cc3)CCN(Cc4)C(=O)c5ccc(N)cn5)c2O1	O=C(c1cccc1)N1CCC2(CCN(Cc3cccc3OCC4)CC2)CC1	Non-blocker	Pass	Fail	Pass	Training
	2	CC1(C)Oc2c(CN3CCC4(Cc3)CCN(Cc4)C(=O)c5ccc(N)cn5)cccc2C1(F)F	O=C(c1cccc1)N1CCC2(CCN(Cc3cccc3OCC4)CC2)CC1	Non-blocker	Pass	Fail	Pass	Test
7	1	COc1ccc2C=CC(=O)N(CCN3CCC(Cc3)NCCc4cc5OCCOc5cn4)c2c1	O = c1ccc2cccc2n1CCN1CCCC(NC2cc3c(cn2)OCCO3)CC1	Non-blocker				Training
	2	O=C1C=Cc2ccc(cc2N1CCN3CCC(Cc3)NCCc4cc5OCCOo5cn4)C#N	O = c1ccc2cccc2n1CCN1CCCC(NC2cc3c(cn2)OCCO3)CC1	Non-blocker				Training

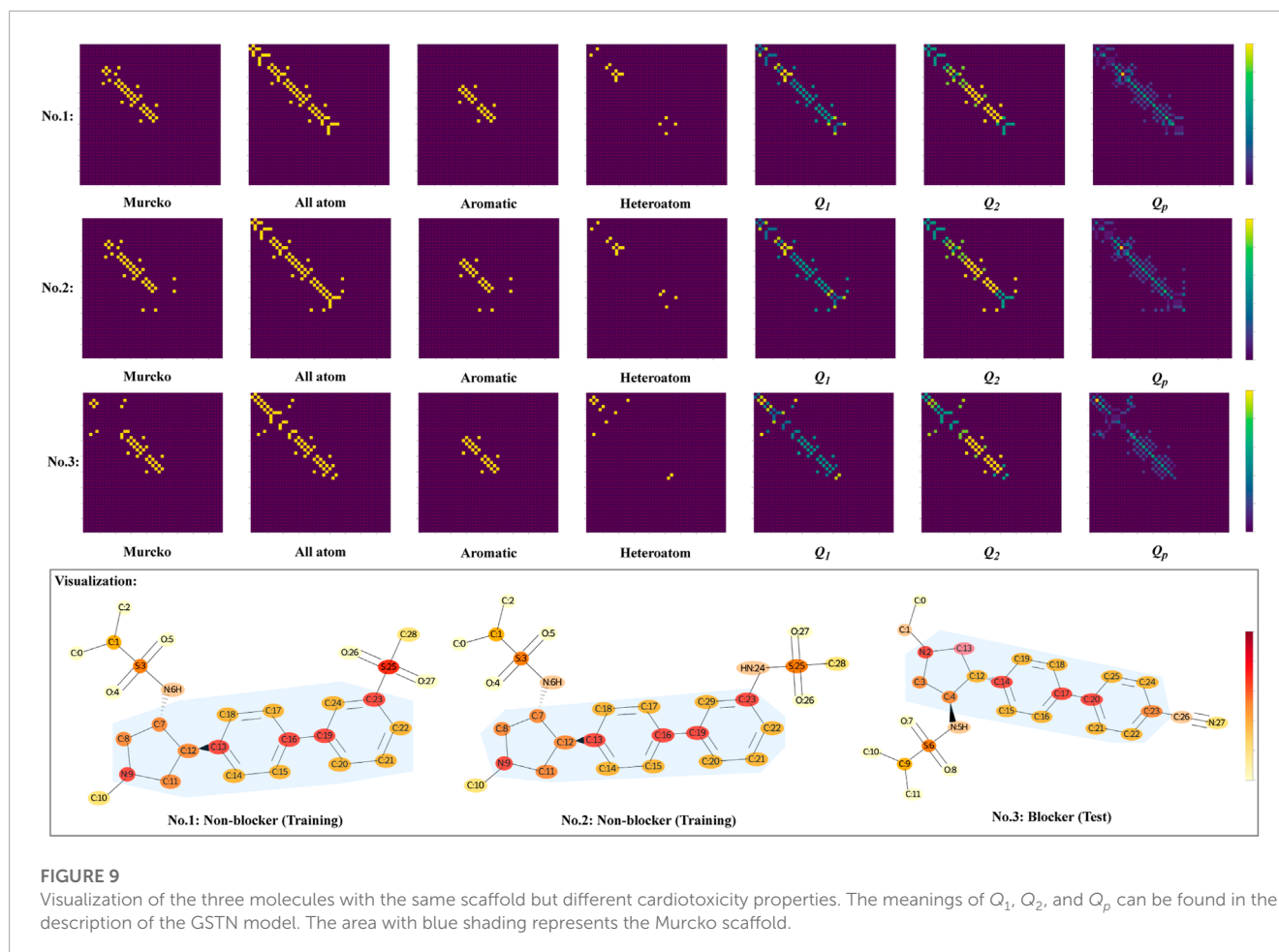
(Continued on the following page)

TABLE 4 (Continued) Results of FDA-approved drugs on different thresholds. Common Murcko scaffold molecules with different properties. Common Murcko scaffold molecule with the same properties.

Group No.	Canonical_smiles	Murcko		Class		GSTN	MGCNN	ECFP + SVM	Test/training
		Murcko	Class	Non-blocker	Pass				
7	F[C@H]1CN(CCN2C(=O)C=Cc3ccc(cc23)C#N)CC[C@H]1NC4c5OCCO:c5cn4	O = c1ccc2ccccc2m1CCN1CCC(NC2c2cc3c(cn2)OCCO3)CC1	Non-blocker	Pass	Fail	Pass		Pass	Test
Group No. Canonical_smiles									
1	COC(=O)c1ccc2ncc(F)c(CCC34CCC(CCC3)(CO4)NCc5ccc6OCC(=O)Nc6n5)c2n1	O=C1COc2ccc(CNC34CCC(CCC3)(CO4)NCc5ccnc6ccnc56)(CC3)OC4)nc2N1	Blocker	Pass					Training
2	FC(F)Oc1ccc2ncc(F)c(CCC34CCC(CCC3)(CO4)NCc5ccc6OCC(=O)Nc6n5)c2n1	O=C1COc2ccc(CNC34CCC(CCC3)(CO4)NCc5ccnc6ccnc56)(CC3)OC4)nc2N1	Blocker	Pass					Training
3	COc1cc2ncc(F)c(CCC34CCC(CCC3)(CO4)NCc5ccc6OCC(=O)Nc6n5)c2nc1OC	O=C1COc2ccc(CNC34CCC(CCC3)(CO4)NCc5ccnc6ccnc56)(CC3)OC4)nc2N1	Blocker	Pass					Training
4	COc1ccc2nc(OC)cc(CCC34CCC(CCC3)(CO4)NCc5ccc6OCC(=O)Nc6n5)c2n1	O=C1COc2ccc(CNC34CCC(CCC3)(CO4)NCc5ccnc6ccnc56)(CC3)OC4)nc2N1	Blocker	Pass					Training
5	COc1ccc2ncc(F)c(CCC34CCC(CCC3)(CO4)NCc5ccc6OCC(=O)Nc6n5)c2n1)C(F)(F)F	O=C1COc2ccc(CNC34CCC(CCC3)(CO4)NCc5ccnc6ccnc56)(CC3)OC4)nc2N1	Blocker	Pass					Training
6	Fc1cnc2ccc(nc2c1)CCC34CCC(CCC3)(CO4)NCc5ccc6OCC(=O)Nc6n5)C#N	O=C1COc2ccc(CNC34CCC(CCC3)(CO4)NCc5ccnc6ccnc56)(CC3)OC4)nc2N1	Blocker	Pass					Training
7	COc1ccc2ncc(F)c(CCC34CCC(CCC3)(CO4)NCc5ccc6OCC(=O)N(C)c6n5)c2n1	O=C1COc2ccc(CNC34CCC(CCC3)(CO4)NCc5ccnc6ccnc56)(CC3)OC4)nc2N1	Blocker	Pass	Pass			Pass	Test
8	Cc1cc(nc2c(CCC34CCC(CCC3)(CO4)NCc5ccc6OCC(=O)Nc6n5)ccnc12)S(=O)(=O)C	O=C1COc2ccc(CNC34CCC(CCC3)(CO4)NCc5ccnc6ccnc56)(CC3)OC4)nc2N1	Blocker	Pass	Pass			Pass	Test
8	CCc1c(C)c2OCC(=O)Nc2nc1CNC34CCC(CCC3)(CO4)NCc5ccc6OCC(=O)Nc6n5)OC4	O=C1COc2ccc(CNC34CCC(CCC3)(CO4)NCc5ccnc6ccnc56)(CC3)OC4)nc2N1	Blocker	Pass	Fail			Pass	Test

TABLE 5 Unique Murcko scaffold.

No.	Canonical_smiles	Murcko	Class	GSTN	MGCNN	ECFP + SWM	Test
1	C[C@@H]1CCCN1CCc2ccc3nc(ccc3c2)c4ccn[nH]4	c1cc(-c2ccc3cc(CCN4CCCC4)ccc3n2)[nH]n1	Non-blocker	Pass	Pass		Test
2	CN(C)CCCCc1ccc(cc1)C2(C)COC2	c1ccc(C2COC2)cc1	Non-blocker	Pass	Pass	Fail	Test
3	CCOc1nc2cccc(C(=O)O)c2n1Cc3ccc(cc3)c4cccc4c5mnn[nH]5	c1ccc(-c2mnn[nH]2)c(-c2ccc(Cn3nc4cccc43)cc2)c1	Non-blocker	Pass	Pass	Pass	Test
4	CLNc1ncc(cc1c2bc3cccc3n2)c4cnn(c4)C5CCNCC5	c1ccc2oc(-c3ncc(-c4cnn(C5CCNCC5)c4)c3)nc2c1	Blocker	Pass	Pass	Fail	Test
5	C(CO)c1ccc(CCCN2CCN(Cc2)cc3ccc4ccc3n2)c4cnn(c4)C5CCCCC5	c1cnc2c(N3CCN(CCCc4ccc(OCCCN5CCCCC5)c4)CC3)cccc2c1	Blocker	Pass	Pass	Fail	Test
6	NC(=O)c1cnc2[nH]ccc2c1NC3CCN(Cc3)c4ccc(nm4)C#N	c1cnn(CN2CCC(Nc3cnc4[nH]ccc4)CC2)c1	Non-blocker	Pass	Fail	Pass	Test
7	CC(C)(C)c1ccc(NC(=O)N2CCN(Cc2)c3ncccc3C)cc1	O=C(Nc1cccc1)N1CCN(c2cccc2)CC1	Blocker	Pass	Fail	Fail	Test
8	Nc1nccn2(nc1c3ccc(cc3)F)C(=O)Nc4cc(ccn4)C(F)(F)F)c12][C@@H]5CCN(C5)C6CCOCC6	O=C(Nc1cccc1)c1ccc(-c2nc(C3CCCN(C4COCOC4)C3)n3cnc23)cc1	Blocker	Pass	Fail	Fail	Test
9	CC(C)(C(=O)N)Cnc1cnc(C(F)F)c1C(=O)Nc2nc(C)c([nH]2)c3ccc(cc3)C(F)F	O=C(Nc1ncc(-c2cccc2)[nH]1)c1cccc1	Blocker	Pass	Fail	Fail	Test
10	O=C1Nc2cccc2N1C3CCN(Cc3)C4CCCC4	O = c1[nH]c2cccc2n1C1CCN(C2CCCCC2)CC1	Non-blocker	Pass	Fail	Pass	Test
11	Cc1c2CCCN3CCCC[C@@H]3CNc4cc(ccc4C(=O)N)n2c5CC(C)(C)CC(=O)c15	O=C1CCCC2c1cc1n2-c2cccc(c2)NCC2CCCCCN2CCCC1	Blocker	Pass	Fail	Fail	Test
12	CN(C)CCCN1cc(C2 = C(C(=O)NC2 = O)c3c[nH]c4cccc34)c5cccc15	O=C1NC(=O)C(c2c[nH]c3cccc23) = C1c1c[nH]c2cccc12	Blocker	Pass	Fail	Pass	Test
13	COc1ccc2[C@H](OC(=O)c2c1OC)[C@@H]3N(C)CCc4cc5OCc5c(OC)c34	O=C1OC(C2NCCc3cc4c(cc32)OC4)c2cccc21	Non-blocker	Pass	Fail	Pass	Test
14	Cc1c2COC(=O)c2ccc1[C@@H](O)CN3CCC4(Cc3)CCN(Cc4)c5ccc(cn5)C#N	O=C1OCc2cc(CCN3CCC4(Cc3)CCN(c3cccc3)CC4)ccc21	Blocker	Pass	Pass	Fail	Test



However, at the current stage, given the low resolution (3.7 Å) and the absence of a ligand, it is difficult to construct an atomic-level model of the protein that reflects the site conformational rearrangement. In addition, the best structure-based model ends with a 0.71 accuracy on 5VA1-IFD-4 conformations (with [1, 30] μM threshold).

In our study, there is a portion of undefined weak blockers in the dual-threshold setting. Further investigation around the weak blockers using another scheme, such as the regression, can be very interesting.

5 Conclusion

In this study, a new graph neural model was proposed by introducing the substructure-aware bias to solve the cardiotoxicity prediction problem. Based on domain knowledge, four types of substructures were used to extract the key feature of cardiotoxic molecules and to strengthen the robustness toward the active cliff problem. Combined with the $\leq 1 \mu\text{M}$, $> 30 \mu\text{M}$ dual-thresholding scheme, which is validated by a comprehensive comparison with the *hERG-DB* and the partially external FDA-approved drugs dataset, the best model attains performance with 90.5% accuracy, 90.4% precision, 90.4% recall, 90.5% F1-score, and 90.4% AUC. Based

on comparisons with the baseline models, the improved pipeline (GSTN model and thresholding scheme) has been validated in terms of the activity cliff problem as well. As a final benefit, the proposed pipeline enables medical researchers to visualize key aspects of cardiotoxicity molecules in order to better understand them.

Data availability statement

Publicly available datasets were analyzed in this study. These data can be found at: <https://pubs.acs.org/doi/10.1021/acs.jcim.1c00744?goto=supporting-info>.

Author contributions

HW, GZ, LI, YI, and MH contributed to the conception and design of the study. HW organized the database. HW and GZ built the model. HW and MH performed the statistical analysis, constructed the tables and figures, and wrote the initial draft. MH, GZ, NO, YI, LI, MA, and SK revised sections of the manuscript. All authors who contributed to the manuscript approved the submitted version.

Funding

This research and development work was supported by the Grant-in-Aid for Early-Career Scientists #20K19923.

Acknowledgments

This research is part of the works of the NAIST-UC DAVIS International Collaborative Laboratory for Health Science & Bioinformatics.

Conflict of interest

The authors declare that the research was conducted in the absence of any commercial or financial relationships

References

- Aerenssens, J., and Paulussen, A. D. (2005). Pharmacogenomics and acquired long qt syndrome. *Future Med.* 6, 259–270. doi:10.1517/14622416.6.3.259
- Albini, A., Pennesi, G., Donatelli, F., Cammarota, R., De Flora, S., and Noonan, D. M. (2010). Cardiotoxicity of anticancer drugs: The need for cardio-oncology and cardio-oncological prevention. *J. Natl. Cancer Inst.* 102, 14–25. doi:10.1093/jnci/djp440
- Ayed, M. (2022). *Representation learning for chemical activity predictions*. New York: City University of New York. Ph.D. thesis.
- Bemis, G. W., and Murcko, M. A. (1996). The properties of known drugs. 1. molecular frameworks. *J. Med. Chem.* 39, 2887–2893. doi:10.1021/jm9602928
- Bouritsas, G., Frasca, F., Zafeiriou, S., and Bronstein, M. M. (2020). *Improving graph neural network expressivity via subgraph isomorphism counting*. doi:10.48550/ARXIV.2006.09252
- Butler, K. T., Davies, D. W., Cartwright, H., Isayev, O., and Walsh, A. (2018). Machine learning for molecular and materials science. *Nature* 559, 547–555. doi:10.1038/s41586-018-0337-2
- Cai, C., Guo, P., Zhou, Y., Zhou, J., Wang, Q., Zhang, F., et al. (2019). Deep learning-based prediction of drug-induced cardiotoxicity. *J. Chem. Inf. Model.* 59, 1073–1084. doi:10.1021/acs.jcim.8b00769
- Carvalho, J. F., Louvel, J., Doornbos, M. L., Klaasse, E., Yu, Z., Brussee, J., et al. (2013). Strategies to reduce herg k+ channel blockade. exploring heteroaromaticity and rigidity in novel pyridine analogues of dofetilide. *J. Med. Chem.* 56, 2828–2840. doi:10.1021/jm301564f
- Cavalluzzi, M. M., Imbrici, P., Gualdani, R., Stefanachi, A., Mangiatordi, G. F., Lentini, G., et al. (2020). Human ether-à-go-go-related potassium channel: Exploring sar to improve drug design. *Drug Discov. today* 25, 344–366. doi:10.1016/j.drudis.2019.11.005
- Chavan, S., Abdelaziz, A., Wiklander, J. G., and Nicholls, I. A. (2016). A k-nearest neighbor classification of herg k+ channel blockers. *J. Computer-Aided Mol. Des.* 30, 229–236. doi:10.1007/s10822-016-9898-z
- Chen, H., Engkvist, O., Wang, Y., Olivecrona, M., and Blaschke, T. (2018). The rise of deep learning in drug discovery. *Drug Discov. Today* 23, 1241–1250. doi:10.1016/j.drudis.2018.01.039
- Comollo, T. W., Zou, X., Zhang, C., Kesters, D., Hof, T., Sampson, K. J., et al. (2022). Exploring mutation specific beta blocker pharmacology of the pathogenic late sodium channel current from patient-specific pluripotent stem cell myocytes derived from long qt syndrome mutation carriers. *Channels* 16, 173–184. doi:10.1080/19336950.2022.2106025
- Creanza, T. M., Delre, P., Ancona, N., Lentini, G., Saviano, M., and Mangiatordi, G. F. (2021). Structure-based prediction of herg-related cardiotoxicity: A benchmark study. *J. Chem. Inf. Model.* 61, 4758–4770. doi:10.1021/acs.jcim.1c00744
- Curran, M. E., Splawski, I., Timothy, K. W., Vincen, G. M., Green, E. D., and Keating, M. T. (1995). A molecular basis for cardiac arrhythmia: Herg mutations cause long qt syndrome. *Cell* 80, 795–803. doi:10.1016/0092-8674(95)90358-5
- Delre, P., Lavado, G. J., Lamanna, G., Saviano, M., Roncaglioni, A., Benfenati, E., et al. (2022). Ligand-based prediction of herg-mediated cardiotoxicity based on the

that could be construed as a potential conflict of interest.

Publisher's note

All claims expressed in this article are solely those of the authors and do not necessarily represent those of their affiliated organizations, or those of the publisher, the editors, and the reviewers. Any product that may be evaluated in this article, or claim that may be made by its manufacturer, is not guaranteed or endorsed by the publisher.

Supplementary material

The Supplementary Material for this article can be found online at: <https://www.frontiersin.org/articles/10.3389/fphys.2023.1156286/full#supplementary-material>

integration of different machine learning techniques. *Front. Pharmacol.* 13, 951083. doi:10.3389/fphar.2022.951083

Doddareddy, M., Klaasse, E., ShaguftaJzerman, A., and Bender, A. (2010). Prospective validation of a comprehensive *in silico* herg model and its applications to commercial compound and drug databases. *ChemMedChem* 5, 716–729. doi:10.1002/cmdc.201000024

Duvenaud, D. K., Maclaurin, D., Iparraguirre, J., Bombarell, R., Hirzel, T., Aspuru-Guzik, A., et al. (2015). Convolutional networks on graphs for learning molecular fingerprints. *Adv. neural Inf. Process. Syst.* 28.

Esposito, C., Landrum, G. A., Schneider, N., Stiefl, N., and Riniker, S. (2021). Ghost: Adjusting the decision threshold to handle imbalanced data in machine learning. *J. Chem. Inf. Model.* 61, 2623–2640. doi:10.1021/acs.jcim.1c00160

Harkati, D., Belaidi, S., Kerassa, A., and Gherraf, N. (2016). Molecular structure, substituent effect and physical-chemistry property relationship of indole derivatives. *Quantum Matter* 5, 36–44. doi:10.1166/qm.2016.1252

Hayat, M. (2017). *Autophagy: Cancer, other pathologies, inflammation, immunity, infection, and aging: Volume 12*, 12. Academic Press.

Jing, Y., Easter, A., Peters, D., Kim, N., and Enyedy, I. J. (2015). *In silico* prediction of herg inhibition. *Future Med. Chem.* 7, 571–586. doi:10.4155/fmc.15.18

Kim, H., and Nam, H. (2020). herg-att: Self-attention-based deep neural network for predicting herg blockers. *Comput. Biol. Chem.* 87, 107286. doi:10.1016/j.compbiolchem.2020.107286

Klon, A. E. (2010). Machine learning algorithms for the prediction of herg and cyp450 binding in drug development. *Expert Opin. Drug Metabolism Toxicol.* 6, 821–833. doi:10.1517/17425255.2010.489550

Koge, D., Ono, N., Huang, M., Altaf-Ul-Amin, M., and Kanaya, S. (2021). Embedding of molecular structure using molecular hypergraph variational autoencoder with metric learning. *Mol. Inf.* 40, 2000203. doi:10.1002/minf.202000203

Konda, L. S. K., Praba, S. K., and Kristam, R. (2019). Herg liability classification models using machine learning techniques. *Comput. Toxicol.* 12, 100089. doi:10.1016/j.comtox.2019.100089

Kornreich, B. G. (2007). The patch clamp technique: Principles and technical considerations. *J. Veterinary Cardiol.* 9, 25–37. doi:10.1016/j.jvc.2007.02.001

Kouligi, S., Jani, V., Nair, V., Saini, J. S., Phukan, S., Sonavane, U., et al. (2021). Molecular dynamics of herg channel: Insights into understanding the binding of small molecules for detuning cardiotoxicity. *J. Biomol. Struct. Dyn.* 40, 5996–6012. doi:10.1080/07391102.2021.1875883

Kratz, J. M., Grienke, U., Scheel, O., Mann, S. A., and Rollinger, J. M. (2017). Natural products modulating the herg channel: Heartaches and hope. *Nat. Product. Rep.* 34, 957–980. doi:10.1039/c7np00014f

Li, X., Zhang, Y., Li, H., and Zhao, Y. (2017). Modeling of the herg k+ channel blockage using online chemical database and modeling environment (ochem). *Mol. Inf.* 36, 1700074. doi:10.1002/minf.201700074

- Ma, S., Sun, Z., Jing, Y., McGann, M., Vajda, S., and Enyedy, I. J. (2022). Use of solvent mapping for characterizing the binding site and for predicting the inhibition of the human ether-à-go-go-related k⁺ channel. *Chem. Res. Toxicol.* 35, 1359–1369. doi:10.1021/acs.chemrestox.2c00036
- Miyazaki, Y., Ono, N., Huang, M., Altaf-Ul-Amin, M., and Kanaya, S. (2020). Comprehensive exploration of target-specific ligands using a graph convolution neural network. *Mol. Inf.* 39, 1900095. doi:10.1002/minf.201900095
- Moorthy, N. H. N., Karthikeyan, C., and Manivannan, E. (2021). Multi-algorithm based machine learning and structural pattern studies for hERG ion channel blockers mediated cardiotoxicity prediction. *Chemom. Intelligent Laboratory Syst.* 208, 104213. doi:10.1016/j.chemolab.2020.104213
- Morgan, H. L. (1965). The generation of a unique machine description for chemical structures—a technique developed at chemical abstracts service. *J. Chem. documentation* 5, 107–113. doi:10.1021/c160017a018
- Morris, C., Lipman, Y., Maron, H., Rieck, B., Krieger, N. M., Grohe, M., et al. (2021). *Weisfeiler and leman go machine learning: The story so far*. doi:10.48550/ARXIV.2112.09992
- Park, J., Sung, G., Lee, S., Kang, S., and Park, C. (2022). Acgcn: Graph convolutional networks for activity cliff prediction between matched molecular pairs. *J. Chem. Inf. Model.* 62, 2341–2351. doi:10.1021/acs.jcim.2c00327
- Park, S. H., Kim, E. H., Chang, H. J., Yoon, S. Z., Yoon, J. W., Cho, S.-J., et al. (2013). “History of bioelectrical study and the electrophysiology of the primo vascular system,” in *Evidence-based Complementary and alternative medicine 2013*.
- Rathman, J. F., Yang, C., and Zhou, H. (2018). Dempster-shafer theory for combining *in silico* evidence and estimating uncertainty in chemical risk assessment. *Comput. Toxicol.* 6, 16–31. doi:10.1016/j.comtox.2018.03.001
- Reiser, P., Neubert, M., Eberhard, A., Torresi, L., Zhou, C., Shao, C., et al. (2022). Graph neural networks for materials science and chemistry. *Commun. Mater.* 3, 93–18. doi:10.1038/s43246-022-00315-6
- Rogers, D., and Hahn, M. (2010). Extended-connectivity fingerprints. *J. Chem. Inf. Model.* 50, 742–754. doi:10.1021/ci100050t
- Ryu, J. Y., Lee, M. Y., Lee, J. H., Lee, B. H., and Oh, K.-S. (2020). Deephit: A deep learning framework for prediction of hERG-induced cardiotoxicity. *Bioinformatics* 36, 3049–3055. doi:10.1093/bioinformatics/btaa075
- Sanguinetti, M. C., and Tristani-Firouzi, M. (2006). HERG potassium channels and cardiac arrhythmia. *Nature* 440, 463–469. doi:10.1038/nature04710
- Scanziani, M., and Häusser, M. (2009). Electrophysiology in the age of light. *Nature* 461, 930–939. doi:10.1038/nature08540
- Tamura, S., Jasial, S., Miyao, T., and Funatsu, K. (2021). Interpretation of ligand-based activity cliff prediction models using the matched molecular pair kernel. *Molecules* 26, 4916. doi:10.3390/molecules26164916
- Van Tilborg, D., Alenicheva, A., and Grisoni, F. (2022). *Exposing the limitations of molecular machine learning with activity cliffs*.
- Vaswani, A., Shazeer, N., Parmar, N., Uszkoreit, J., Jones, L., Gomez, A. N., et al. (2017). Attention is all you need. *Adv. neural Inf. Process. Syst.* 30.
- Villoutreix, B. O., and Taboureau, O. (2015). Computational investigations of hERG channel blockers: New insights and current predictive models. *Adv. drug Deliv. Rev.* 86, 72–82. doi:10.1016/j.addr.2015.03.003
- Viskin, S. (1999). Long qt syndromes and torsade de pointes. *Lancet* 354, 1625–1633. doi:10.1016/S0140-6736(99)02107-8
- Wang, W., and MacKinnon, R. (2017). Cryo-em structure of the open human ether-à-go-go-related k⁺ channel hERG. *Cell* 169, 422–430.e10. doi:10.1016/j.cell.2017.03.048
- Warmke, J. W., and Ganetzky, B. (1994). A family of potassium channel genes related to eag in drosophila and mammals. *PANS* 91, 3438–3442. doi:10.1073/pnas.91.8.3438
- Wu, Z., Ramsundar, B., Feinberg, E. N., Gomes, J., Geniesse, C., Pappu, A. S., et al. (2018). Moleculenet: A benchmark for molecular machine learning. *Chem. Sci.* 9, 513–530. doi:10.1039/c7sc02664a
- Yu, H.-b., Li, M., Wang, W.-p., and Wang, X.-l. (2016a). High throughput screening technologies for ion channels. *Acta Pharmacol. Sin.* 37, 34–43. doi:10.1038/aps.2015.108
- Yu, H.-b., Zou, B.-y., Wang, X.-l., and Li, M. (2016b). Investigation of miscellaneous hERG inhibition in large diverse compound collection using automated patch-clamp assay. *Acta Pharmacol. Sin.* 37, 111–123. doi:10.1038/aps.2015.143
- Yun, S., Jeong, M., Kim, R., Kang, J., and Kim, H. J. (2019). Graph transformer networks. *Adv. neural Inf. Process. Syst.* 32.
- Zhang, C., Zhou, Y., Gu, S., Wu, Z., Wu, W., Liu, C., et al. (2016). *In silico* prediction of hERG potassium channel blockage by chemical category approaches. *Toxicol. Res.* 5, 570–582. doi:10.1039/c5tx00294j
- Zhang, X., Mao, J., Wei, M., Qi, Y., and Zhang, J. Z. (2022). Hergspred: Accurate classification of hERG blockers/nonblockers with machine-learning models. *J. Chem. Inf. Model.* 62, 1830–1839. doi:10.1021/acs.jcim.2c00256
- Zhou, J., Cui, G., Hu, S., Zhang, Z., Yang, C., Liu, Z., et al. (2020). Graph neural networks: A review of methods and applications. *AI Open* 1, 57–81. doi:10.1016/j.aiopen.2021.01.001