

Lawrence Berkeley National Laboratory

LBL Publications

Title

Proton beam quality enhancement by spectral phase control of a PW-class laser system.

Permalink

<https://escholarship.org/uc/item/5sn6w3zq>

Journal

Scientific reports, 11(1)

ISSN

2045-2322

Authors

Ziegler, T
Albach, D
Bernert, C
et al.

Publication Date

2021-04-01

DOI

10.1038/s41598-021-86547-x

Peer reviewed



OPEN

Proton beam quality enhancement by spectral phase control of a PW-class laser system

T. Ziegler^{1,2}✉, D. Albach¹, C. Bernert^{1,2}, S. Bock¹, F.-E. Brack^{1,2}, T. E. Cowan^{1,2}, N. P. Dover³, M. Garten^{1,2}, L. Gaus^{1,2}, R. Gebhardt¹, I. Goethel^{1,2}, U. Helbig¹, A. Irman¹, H. Kiriya³, T. Kluge¹, A. Kon³, S. Kraft¹, F. Kroll¹, M. Loeser¹, J. Metzkes-Ng¹, M. Nishiuchi³, L. Obst-Huebl^{1,4}, T. Püschel¹, M. Rehwald^{1,2}, H.-P. Schlenvoigt¹, U. Schramm^{1,2} & K. Zeil¹

We report on experimental investigations of proton acceleration from solid foils irradiated with PW-class laser-pulses, where highest proton cut-off energies were achieved for temporal pulse parameters that varied significantly from those of an ideally Fourier transform limited (FTL) pulse. Controlled spectral phase modulation of the driver laser by means of an acousto-optic programmable dispersive filter enabled us to manipulate the temporal shape of the last picoseconds around the main pulse and to study the effect on proton acceleration from thin foil targets. The results show that applying positive third order dispersion values to short pulses is favourable for proton acceleration and can lead to maximum energies of 70 MeV in target normal direction at 18 J laser energy for thin plastic foils, significantly enhancing the maximum energy compared to ideally compressed FTL pulses. The paper further proves the robustness and applicability of this enhancement effect for the use of different target materials and thicknesses as well as laser energy and temporal intensity contrast settings. We demonstrate that application relevant proton beam quality was reliably achieved over many months of operation with appropriate control of spectral phase and temporal contrast conditions using a state-of-the-art high-repetition rate PW laser system.

Laser-driven ion acceleration^{1,2} as a very compact accelerator technology with remarkable beam properties has been associated with a multitude of medical^{3,4}, scientific⁵⁻⁸ and technical⁹⁻¹¹ applications for several years now. Realizing those applications turned out to be highly complex requiring a sophisticated level of control on the laser plasma interaction process, which determines the beam quality and energy. Key to any progress on that matter is a detailed understanding of the underlying physics as well as appropriate technical control and metrology of the acceleration process, which have therefore been extensively studied both experimentally and theoretically over the last 20 years.

Target normal sheath acceleration (TNSA) is the most robust and widely understood acceleration regime, and has therefore received particular attention in the context of applications. It describes the generation of electric space-charge fields (\gtrsim TV/m), driven by laser-accelerated prompt front-side electrons, by which particles from a contaminant layer at the target rear side get ionized and accelerated to energies of several tens of MeV per nucleon. Employing dedicated laser-target configurations (e.g. ultra-thin, low density, special shape targets) allowed for control and establishment of optimized TNSA-based as well as other advanced acceleration regimes whereby recent experiments have demonstrated that combinations of those or hybrid schemes show huge potential¹²⁻¹⁴. These efforts are complemented by a variety of laser pulse parameter scans (e.g. energy, duration, shape, temporal contrast of the pulse) to determine the optimal laser proton accelerator performance¹⁵⁻²⁰.

Yet, highest proton energies were mainly achieved with high intensity long-pulse lasers delivering only a few shots per day which prevents application-relevant high average currents^{12,21}. Ultra-short pulse laser systems (few tens of femtoseconds pulse duration) with high repetition rate (up to 10 Hz) hold the promise to bridge this gap²² and given the recent progress in laser technology, numerous facilities worldwide²³⁻²⁸ approach or even surpass the PW-level with on target intensities between 10^{21} and 10^{22} W/cm². Furthermore, these sources provide

¹Helmholtz-Zentrum Dresden - Rossendorf, Institute of Radiation Physics, 01328 Dresden, Germany. ²Technische Universität Dresden, 01069 Dresden, Germany. ³Kansai Photon Science Institute, National Institutes for Quantum and Radiological Science and Technology, Kyoto 619-0215, Japan. ⁴Present address: Lawrence Berkeley National Laboratory, Berkeley, CA 94720, USA. ✉email: t.ziegler@hzdr.de

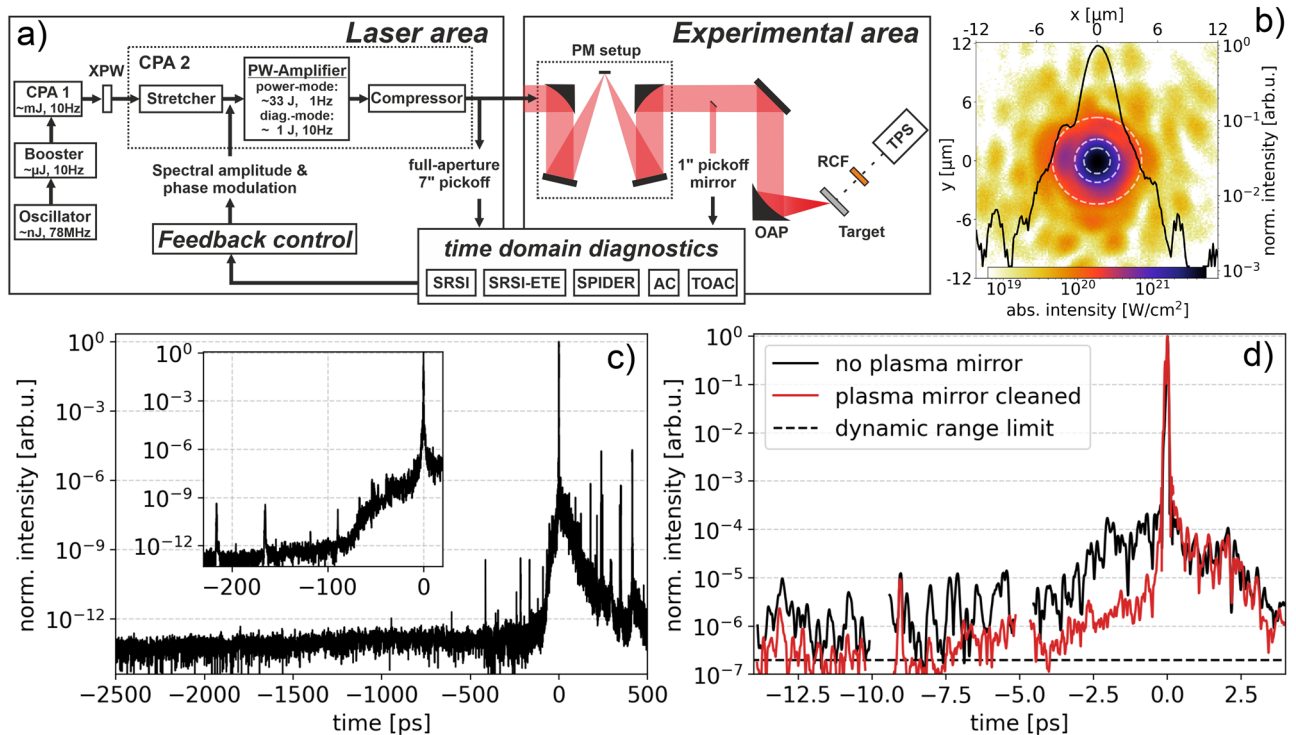


Figure 1. (a) Illustration of the DRACO PW laser, the experimental area, the two pick-off ports and the different diagnostics for time domain measurements of the laser pulse. (b) Magnified DRACO focal spot measurement at the experimental area with logarithmic color scale for absolute intensities. The black line represents a normalized horizontal line out of the focal intensity distribution, the white dashed circles represent the FWHM, 2σ and 4σ area. (c,d) Temporal intensity contrast of the DRACO laser on the: (c) ns-range (inset: 100 ps), measured with scanning TOAC (*SequoiaHD*), (d) ps-range for intrinsic (black) and PM cleaned (red) contrast conditions, measured with single-shot time extended self-referenced spectral interferometry technique³⁰ (SRSI-ETE).

additional options for control, modifications and diagnostics being of particular importance for the characterization of laser pulse parameters in focus at these intensities. Upon main pulse arrival, the real plasma conditions due to pre-pulses or spatio-temporal couplings may differ significantly from those assumed in idealized theoretical models. In view of exploiting the full potential of laser driven ion accelerators, on-shot diagnostics and feedback routines based on advanced computing methods, like already applied for wakefield accelerators²⁹, might also become an option.

We experimentally demonstrate that actively manipulating the temporal pulse shape of the driver laser significantly enhances the proton acceleration performance using a state-of-the-art PW ultra-short pulse system. In a series of experiments under well-controlled contrast conditions with different target materials and thicknesses as well as laser energy and temporal intensity contrast configurations, we found that proton cut-off energies and particle numbers were consistently enhanced by changing the temporal laser profile from a Fourier transform limited (FTL) to an asymmetric pulse shape. With optimized settings we were able to routinely deliver maximum proton energies around 60 MeV. Compared to the nominal settings, thus an average enhancement of the maximum proton energies of $\sim 37\%$ could be achieved. Based on the simplicity of the method and the long-term stability of our results, we believe that this optimization method is universally applicable to other laser systems with particular importance when operating in the PW regime.

Results

The presented experiments were carried out at the ultra-short pulse laser DRACO²⁴ at the Helmholtz-Zentrum Dresden - Rossendorf (HZDR). DRACO is a dual beam double CPA (chirped pulse amplification) Ti:Sa laser system, designed to deliver 30 J within 30 fs on target with 1 Hz repetition rate. A simplified sketch of the laser system alongside the experimental setup can be found in Fig. 1a).

The temporal pulse structure of DRACO was characterized with rigorous care and a broad variety of scanning and single-shot diagnostics. This includes second and third order autocorrelators (AC and TOAC), field auto-correlation methods like self-referenced spectral interferometry (SRSI & SRSI-ETE) and spectral phase interferometry for direct electric-field reconstruction (SPIDER) at different positions (vacuum compressor output & just before final focusing) and pick-off methods (full-aperture $\approx 7''$ & $1''$ mirror) within the laser chain and for different energy settings (diagnostic-mode & power-mode which corresponds to non-pumped (1 J) or fully-pumped main-amplifiers (33 J), respectively). Temporal pulse contrast optimization is achieved by a series of fast pockels cells with optimized timing structure and minimal timing jitter and XPW filtering between the two CPA

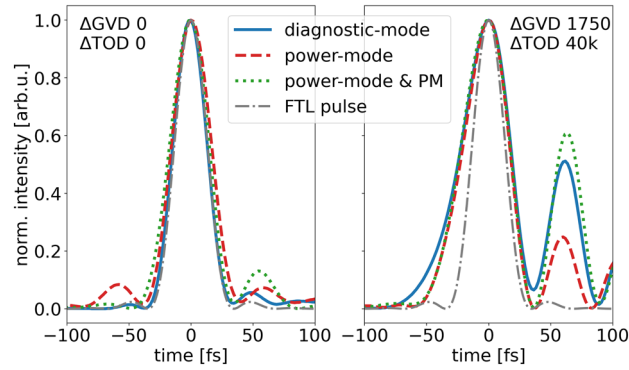


Figure 2. Temporal laser pulse shapes retrieved from SPIDER measurements for different spectral phase configurations (left: after automatic *Dazzler* Feedback-loop, right: manual phase manipulation $\Delta\text{GVD } 1750 \text{ fs}^2$, $\Delta\text{TOD } 40\text{k fs}^3$). While different laser energy configurations (diagnostic mode—solid blue, power mode—dashed red, power mode & PM—dotted green) show consistent pulse shapes, the two spectral phase settings significantly differ between an almost ideally compressed FTL pulse (dash-dotted grey) and an asymmetrical, slightly longer pulse with shallow rising edge and shifted pre- and postpuls distribution.

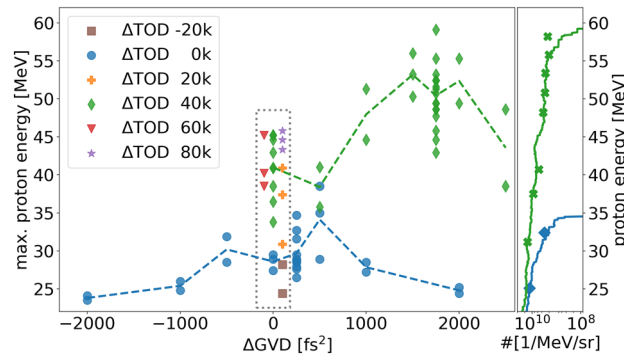


Figure 3. Maximum proton energies from 400 nm Formvar targets for different GVD and TOD *Dazzler* values and PM cleaned contrast. Each marker represents one single shot, dashed lines connect mean values. While the maximum energy for the standard settings ($\Delta\text{GVD}=0 \text{ fs}^2$, $\Delta\text{TOD}=0 \text{ fs}^3$) is below 30 MeV, the optimized conditions (1750 fs^2 , 40k fs^3) yield 60 MeV and thus an effective doubling of the maximum energy in this case. The right side plot shows particle numbers from shots with TPS (solid lines) and shots with RCF (individual markers) measurements for the standard (blue) and optimized (green) settings with higher particle numbers in the optimized case.

stages yielding an intensity contrast ratio better than 10^{-12} up to -100 ps prior to the main pulse as depicted in Fig. 1c). The inset shows the rise of the coherent pedestal at -75 ps which persists at 10^{-8} until -10 ps . The few visible pre-pulse-like signatures between -500 and -100 ps can partially be identified as measurement artefacts typical for TOAC, reflecting the existence of post-pulses generated by internal reflections in remaining planar transmission optics (e.g. amplifier crystals). Dominantly the signatures represent the conversion of such post-pulses into pre-pulses by non-linear processes associated with the accumulated B-integral in the amplifier chain^{31,32}. Remaining below a level of 10^{-9} they can be further suppressed on-demand by inserting a re-collimating single plasma mirror (PM) setup installed close to the target. The PM yields an enhancement of the intrinsic temporal contrast by almost two orders of magnitude resulting in an intensity ratio better than 10^{-5} at -1 ps prior to the main pulse as depicted in Fig. 1d) for the ps time window. Sub-ps pulse optimization is achieved by controlling the spectral amplitude and phase of the coherent portions of the laser beam. Therefore, two acousto-optic programmable dispersive filters (AOPDFs), namely *Mazzler*³³ and *Dazzler*³⁴ from Fastlite/AmplitudeTechnologies, are incorporated in each CPA stage to maintain the desired spectral shape and, respectively, the spectral phase components by pre-compensation of higher order residual phase terms acquired by the laser pulse while propagating through the laser chain.

After the PM, the wave-front corrected laser pulse with a total remaining energy of 18 J is focused by an F/2.3 parabola to a full width at half maximum (FWHM) spotsize of $2.6 \mu\text{m}$ yielding peak intensities of $5.4 \times 10^{21} \text{ W/cm}^2$. The high spatial quality of the focused laser beam can be seen in Fig. 1b), where the dashed circles represent the FWHM, 2σ and 4σ area containing 35%, 58% and 82% of the total laser energy, respectively. The laser pulses irradiated the targets at an incidence angle of 45° with p-polarization.

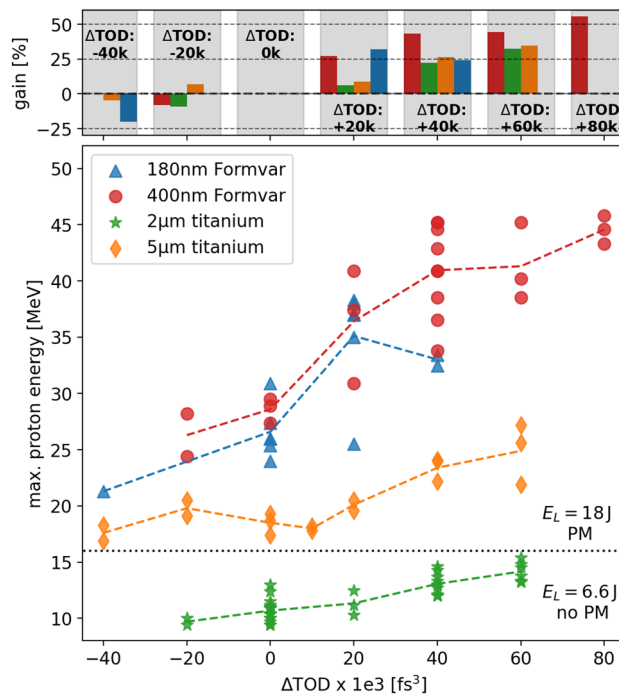


Figure 4. Maximum proton energy with respect to ΔTOD ($\Delta\text{GVD} = 0$) for different target materials and thicknesses (represented by different markers and colors) as well as on target laser energy (E_L) and temporal contrast (PM and no PM) settings. The upper plot shows the relative energy gain with respect to the standard settings for the different target types and ΔTOD values.

The main particle diagnostic to detect and analyze the accelerated ion beam was a multi-channel plate equipped Thomson parabola spectrometer (TPS) aligned to the target normal direction providing an energy dependent resolution of 5% with a minimum detectable proton energy of 7 MeV. For some selected shots stacks of calibrated radiochromic films (RCF) were inserted at a distance of 55 mm behind the target allowing for proton beam profile characterization, absolute particle number calibration and complementary maximum energy detection.

For the experimental measurements we manually varied the spectral phase terms group velocity dispersion (GVD) and third order dispersion (TOD) by presetting the according values in the *Dazzler* device, enabling us to individually adjust the instantaneous frequencies of the electric field and thus the temporal shape of the laser pulse. First, we ensured that the automatic *Dazzler* feedback loop produces a flat phase over the entire laser spectrum providing almost ideal FTL pulses for all the different laser energy and PM configurations, examples of which are shown by the SPIDER measurements on the left in Fig. 2. Simultaneous measurements performed with the different redundant time domain diagnostics and pick-off ports delivered consistent results, thus all relative phase changes introduced in the following can be referenced to a 30 fs FWHM near Gaussian pulse shape (standard case). On that basis, a pure GVD change preserves the symmetric shape but stretches the pulse in time resulting in a reduction in peak intensity. A pure modification of the TOD leads to an asymmetric pulse shape, identified by a shallow rising and sharp falling edge (or vice versa depending on sign) and reduction in peak intensity due to frequency components being shifted away from the main pulse which results in post- or pre-pulse generation and reduction. Measurements with the different time domain diagnostics confirm the described effects of spectral phase changes on the temporal pulse shape (c.f. Fig. 2). We then systematically investigated the influence of those spectral phase changes on proton acceleration for 400 nm Formvar targets. Figure 3 shows the resulting cut-off energies and particle numbers for different *Dazzler* phase term modifications ΔGVD and ΔTOD .

While initially keeping the GVD unchanged ($\Delta\text{GVD} = 0 \text{ fs}^2$), we varied the TOD from -20 k fs^3 to $+80 \text{ k fs}^3$ in 20 k fs^3 steps (represented by different colors inside the dotted rectangle in Fig. 3). Negative TOD values degrade the acceleration performance, whereas positive TOD values generally result in higher proton cut-off energies, which increase from below 30 MeV to more than 40 MeV. However, a clear optimum is not apparent from this data set, especially since we could not further increase the TOD without producing deep and sharp modulations of the laser spectrum, critical for system safety.

To clarify whether the observed proton energy enhancement can be attributed to TOD-induced pulse shape modifications or to the simultaneously altered length of the laser pulse, we performed an additional GVD scan for TOD values 0 fs^3 and 40 k fs^3 . For TOD 0 fs^3 the GVD was varied between -2000 and $+2000 \text{ fs}^2$ without having a comparable large effect on the maximum proton energies. At $\pm 2000 \text{ fs}^2$ cut-off energies drop below 25 MeV as a result of the reduced laser intensity due to the larger pulse duration. Keeping the TOD value fixed at 40 k fs^3 , we scanned the GVD between 0 and 2500 fs^2 which led to a further energy enhancement for higher GVD values, clearly peaking at 1750 fs^2 with 60 MeV, followed by a decrease for even higher GVD values. RCF

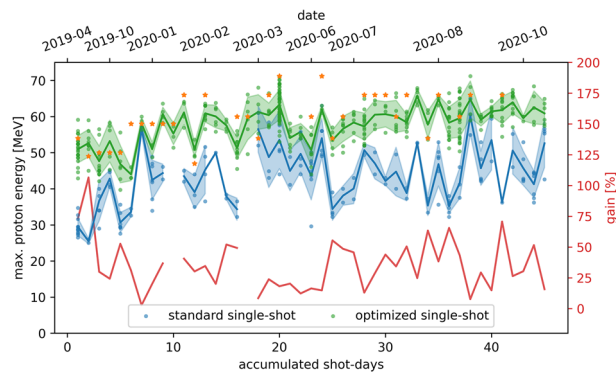


Figure 5. Long-term stability of the pulse shape optimization induced enhancement effect over a period of more than one year of operation for a total of 575 shots on 45 days of laser proton acceleration experiments. The laser target configuration was the same or very similar to the one described in the text (18 J pulse energy, plasma mirror cleaned contrast, oblique laser incidence, 200–400 nm thick Formvar targets). Compared are the performances obtained for standard (blue dots) and optimized spectral phase settings (green dots) represented by measured proton cut-off energies with TPS and complemented by RCF stack data (orange stars) whenever available. Each marker represents one single shot. The shaded area represents the standard deviation, the solid lines connect the mean of individual data sets serving as guide for the eye. The red solid curve indicates the performance gain in mean energy that was achieved by finding the optimized spectral phase settings.

measurements confirm the TPS results and prove a clear enhancement effect for the optimized spectral phase parameters in terms of particle numbers as well (right side plot in Fig. 3). This results in a laser-to-proton energy conversion efficiency of $\sim 4\%$ for protons with kinetic energies of more than 20 MeV. The SPIDER measurements on the right in Fig. 2 reveal that the laser pulse in the optimized acceleration case ($\Delta\text{GVD} = +1750 \text{ fs}^2$, $\Delta\text{TOD} = +40 \text{ k fs}^3$) still has a well compressed but asymmetric shape, represented by a shallow rising edge followed tens of fs later by a non-negligible post-pulse structure. Higher or lower GVD values increase the pulse duration and yield lower cut-off energies as a result of the reduced peak intensity.

As the observed gain in energy and particle number is correlated to the change of the TOD values applied, we further studied the stability of this enhancement effect for various other laser-target configurations. Figure 4 shows the effect of scanning the TOD while keeping the GVD unchanged ($\text{GVD} = 0 \text{ fs}^2$) on the maximum proton energy for 180 nm and 400 nm Formvar as well as $5 \mu\text{m}$ and $2 \mu\text{m}$ titanium targets, where in the latter case the PM was removed and the laser energy was reduced to 6.6 J.

The obtained results reveal that the general trend of the enhancement effect exists for all studied configurations which cover a broad parameter range and hence different initial interaction conditions. Although the relative enhancement of the maximum proton energies varies for these different cases, the data show that a $\sim 20\%$ gain is always achievable. Positive TOD values thereby always lead to higher maximum proton energies while lower TOD values decrease the acceleration performance. An appropriate adjustment of the GVD (and potentially even higher order phase terms) to maintain a short pulse duration is expected to increase the gain even more as demonstrated in Fig. 3.

The described spectral phase term optimization was subsequently established as a daily preparation routine during proton acceleration experiments at the DRACO laser. On the basis of a few shots each day, the best performing GVD-TOD value combination was evaluated and then applied for the rest of the experiment. Optimal TOD values ranged between 20 k fs^3 and 40 k fs^3 and GVD values were adapted accordingly so that the pulse duration became minimal. Maximum proton energy data recorded on 45 different shot-days (575 total shots) over a period of more than 1 year of operation is presented in Fig. 5. For the standard settings of the spectral phase, it can be seen that the maximum proton energy for individual shots is fluctuating between 25 MeV and 65 MeV, resulting in an average energy of $(42.6 \pm 9.1) \text{ MeV}$. When changing to the optimized settings, maximum energies fluctuate between 40 MeV and 71 MeV, with reduced shot-to-shot fluctuation and an increased average energy of $(58.2 \pm 6.2) \text{ MeV}$. The red solid curve in Fig. 5 shows the performance enhancement between the standard and optimized conditions, yielding an average cut-off energy gain of $\sim 37\%$.

Conclusion

In conclusion, this paper shows that temporal pulse modification enables application relevant proton beam quality with a state-of-the-art high-repetition rate PW laser system. Using an AOPDF and manually manipulating the spectral phase, notably the third order dispersion term, significantly enhances proton acceleration up to 70 MeV.

The highest proton cut-off energies were measured for temporal pulse parameters well different from those of ideally compressed FTL pulses. Optimal pulse shape modification can lead to a significant gain of maximum proton energy and particle numbers. The demonstrated stability of this effect during a long period of operation and over a wide range of parameters like target thickness and material as well as laser energy and temporal intensity contrast implies that this method could be easily transferred to other laser systems operating in the PW range. Existing literature simulating asymmetric pulse shapes^{35,36} show gain values from 50 to 65%, but is not

conclusive about the required type of asymmetry. Moreover, they do not cover the experimental parameters of this study as they were performed in a different regime. Double pulse structures^{18,37} may explain the effect only for cases where the second pulse contains either the same amount or the majority of the laser pulse energy, which disagrees with the pulse shape induced by positive TOD values. Therefore, numerical investigations to unravel the complete microscopic picture of the complex laser-plasma acceleration process when using non-perfectly compressed pulses are necessary. As an important result of the presented spectral phase manipulation technique, further experimental and numerical research should focus on all different aspects of the thereby induced laser intensity distribution changes within the complete pico-second time window around the main pulse to further improve control of the observed enhancement effect. One major challenge to be addressed for this in the future is the determination of the real plasma conditions several ps before the main pulse arrival, which means that the full energy laser pulse contrast and the corresponding plasma response need to be precisely known. Note, in perspective of future applications, automated dispersion control to optimize laser proton acceleration is a readily applicable method to be combined with real-time feedback routines based on advanced computing schemes.

The data that support the findings of this study are available from the corresponding author upon reasonable request.

Received: 21 December 2020; Accepted: 16 March 2021

Published online: 01 April 2021

References

- Daido, H., Nishiuchi, M. & Pirozhkov, A. S. Review of laser-driven ion sources and their applications. *Rep. Progr. Phys.* **75**, 056401. <https://doi.org/10.1088/0034-4885/75/5/056401> (2012).
- Macchi, A., Borghesi, M. & Passoni, M. Ion acceleration by superintense laser-plasma interaction. *Rev. Mod. Phys.* **85**, 751–793. <https://doi.org/10.1103/RevModPhys.85.751> (2013).
- Malka, V. *et al.* Practicability of protontherapy using compact laser systems. *Med. Phys.* **31**, 1587–1592. <https://doi.org/10.1118/1.1747751> (2004).
- Masood, U. *et al.* A light-weight compact proton gantry design with a novel dose delivery system for broad-energetic laser-accelerated beams. *Phys. Med. Biol.* **62**, 5531–5555. <https://doi.org/10.1088/1361-6560/aa7124> (2017).
- Patel, P. *et al.* Isochoric heating of solid-density matter with an ultrafast proton beam. *Phys. Rev. Lett.* **91**, 125004. <https://doi.org/10.1103/PhysRevLett.91.125004> (2003).
- Romagnani, L. *et al.* Dynamics of electric fields driving the laser acceleration of multi-MeV protons. *Phys. Rev. Lett.* **95**, 195001. <https://doi.org/10.1103/PhysRevLett.95.195001> (2005).
- Obst-Huebl, L. *et al.* All-optical structuring of laser-driven proton beam profiles. *Nat. Commun.* **9**, 5292. <https://doi.org/10.1038/s41467-018-07756-z> (2018).
- Albert, F. *et al.* 2020 roadmap on plasma accelerators. *New J. Phys.* **23**, 031101 (2020).
- Roth, M. *et al.* Fast ignition by intense laser-accelerated proton beams. *Phys. Rev. Lett.* **86**, 436–439. <https://doi.org/10.1103/PhysRevLett.86.436> (2001).
- Barberio, M., Veltri, S., Scisciò, M. & Antici, P. Laser-accelerated proton beams as diagnostics for cultural heritage. *Sci. Rep.* **7**, 85–87. <https://doi.org/10.1038/srep40415> (2017).
- Barberio, M. *et al.* Laser-accelerated particle beams for stress testing of materials. *Nat. Commun.* **9**, 372. <https://doi.org/10.1038/s41467-017-02675-x> (2018).
- Higginson, A. *et al.* Near-100 MeV protons via a laser-driven transparency-enhanced hybrid acceleration scheme. *Nat. Commun.* **9**, 724. <https://doi.org/10.1038/s41467-018-03063-9> (2018).
- Hilz, P. *et al.* Isolated proton bunch acceleration by a petawatt laser pulse. *Nat. Commun.* **9**, 423. <https://doi.org/10.1038/s41467-017-02663-1> (2018).
- Ma, W. J. *et al.* Laser acceleration of highly energetic carbon ions using a double-layer target composed of slightly underdense plasma and ultrathin foil. *Phys. Rev. Lett.* **122**, 014803. <https://doi.org/10.1103/PhysRevLett.122.014803> (2019).
- Fuchs, J. *et al.* Laser-driven proton scaling laws and new paths towards energy increase. *Nat. Phys.* **2**, 48–54. <https://doi.org/10.1038/nphys199> (2006).
- Kaluza, M. *et al.* Influence of the laser prepulse on proton acceleration in thin-foil experiments. *Phys. Rev. Lett.* **93**, 045003. <https://doi.org/10.1103/PhysRevLett.93.045003> (2004).
- Zeil, K. *et al.* Direct observation of prompt pre-thermal laser ion sheath acceleration. *Nat. Commun.* **3**, 874. <https://doi.org/10.1038/ncomms1883> (2012).
- Brenner, C. M. *et al.* High energy conversion efficiency in laser-proton acceleration by controlling laser-energy deposition onto thin foil targets. *Appl. Phys. Lett.* **104**, 081123. <https://doi.org/10.1063/1.4865812> (2014).
- Obst, L. *et al.* On-shot characterization of single plasma mirror temporal contrast improvement. *Plasma Phys. Controlled Fusion* **60**, 054007. <https://doi.org/10.1088/1361-6587/aab3bb> (2018).
- Tayyab, M., Bagchi, S., Chakera, J. A., Khan, R. A. & Naik, P. A. Effect of temporally modified ultra-short laser pulses on ion acceleration from thin foil targets. *Phys. Plasmas* **25**, 083113. <https://doi.org/10.1063/1.5037260> (2018).
- Wagner, F. *et al.* Maximum proton energy above 85 MeV from the relativistic interaction of laser pulses with micrometer thick CH₂ targets. *Phys. Rev. Lett.* **116**, 429. <https://doi.org/10.1103/PhysRevLett.116.205002> (2016).
- Kim, I. J. *et al.* Radiation pressure acceleration of protons to 93 MeV with circularly polarized petawatt laser pulses. *Phys. Plasmas* **23**, 070701. <https://doi.org/10.1063/1.4958654> (2016).
- Papadopoulos, D. *et al.* The Apollon 10 PW laser: Experimental and theoretical investigation of the temporal characteristics. *High Power Laser Sci. Eng.* **4**, e34. <https://doi.org/10.1017/hpl.2016.34> (2016).
- Schramm, U. *et al.* First results with the novel petawatt laser acceleration facility in Dresden. *J. Phys. Conf. Ser.* **874**, 012028. <https://doi.org/10.1088/1742-6596/874/1/012028> (2017).
- Kiriyama, H. *et al.* High-contrast high-intensity repetitive petawatt laser. *Opt. Lett.* **43**, 2595. <https://doi.org/10.1364/OL.43.002595> (2018).
- Sung, J. H. *et al.* 42 PW, 20 fs Ti:sapphire laser at 0.1 Hz. *Opt. Lett.* **42**, 2058. <https://doi.org/10.1364/OL.42.002058> (2017).
- Gan, Z. *et al.* 200 J high efficiency Ti:sapphire chirped pulse amplifier pumped by temporal dual-pulse. *Opt. Express* **25**, 5169. <https://doi.org/10.1364/OE.25.005169> (2017).
- Nakamura, K. *et al.* Diagnostics, control and performance parameters for the BELLA high repetition rate petawatt class laser. *IEEE J. Quant. Electron.* **53**, 1–21. <https://doi.org/10.1109/JQE.2017.2708601> (2017).
- Shaloo, R. *et al.* Automation and control of laser wakefield accelerators using Bayesian optimization. *Nat. Commun.* **11**, 1–8. <https://doi.org/10.1038/s41467-020-20245-6> (2020).

30. Oksenhendler, T., Bizouard, P., Albert, O., Bock, S. & Schramm, U. High dynamic, high resolution and wide range single shot temporal pulse contrast measurement. *Opt. Express* **25**, 12588. <https://doi.org/10.1364/OE.25.012588> (2017).
31. Didenko, N. V., Konyashchenko, A. V., Lutsenko, A. P. & Tenyakov, S. Y. Contrast degradation in a chirped-pulse amplifier due to generation of prepulses by postpulses. *Opt. Express* **16**, 3178. <https://doi.org/10.1364/oe.16.003178> (2008).
32. Kiriya, H. *et al.* Experimental investigation on the temporal contrast of pre-pulses by post-pulses in a petawatt laser facility. *Opt. Lett.* **45**, 1100. <https://doi.org/10.1364/ol.384759> (2020).
33. Oksenhendler, T., Kaplan, D., Tournois, P., Greetham, G. & Estable, F. Intracavity acousto-optic programmable gain control for ultra-wide-band regenerative amplifiers. *Appl. Phys. B* **83**, 491–494. <https://doi.org/10.1007/s00340-006-2231-0> (2006).
34. Verluise, F., Laude, V., Cheng, Z., Spielmann, C. & Tournois, P. Amplitude and phase control of ultrashort pulses by use of an acousto-optic programmable dispersive filter: pulse compression and shaping. *Opt. Lett.* **25**, 575. <https://doi.org/10.1364/OL.25.000575> (2000).
35. Souri, S., Amrollahi, R. & Sadighi-Bonabi, R. Laser-driven proton acceleration enhancement by the optimized intense short laser pulse shape. *Phys. Plasmas* **24**, 053108. <https://doi.org/10.1063/1.4982611> (2017).
36. Kumar, S., Gopal, K. & Gupta, D. N. Proton acceleration from overdense plasma target interacting with shaped laser pulses in the presence of preplasmas. *Plasma Phys. Controlled Fusion* **61**, 085001. <https://doi.org/10.1088/1361-6587/ab216e> (2019).
37. Ferri, J. *et al.* Proton acceleration by a pair of successive ultraintense femtosecond laser pulses. *Phys. Plasmas* **25**, 043115. <https://doi.org/10.1063/1.5026391> (2018).

Acknowledgements

We gratefully acknowledge the DRACO laser team for excellent experiment support. The work was partially supported by H2020 Laserlab Europe V (PRISES, Contract No. 871124), as well as the QST President's Strategic Grant (QST International Research Initiative (AAA98) and Creative Research (ABACS)) and by the JST-MIRAI Program (Grant No. JPMJMI17A1, Japan). M.N. was supported by JST PRESTO Grant No. JP-MJPR16P9 and by the Mitsubishi Foundation.

Author contributions

T.Z., C.B., F.-E.B., S.K., F.K., J.M., L.O., M.R., H.-P.S. and K.Z. have set up and conducted the experiment. T.Z., S.B., R.G., U.H., A.L., T.P., U.S. and K.Z. contributed to laser operation and diagnostics development. T.Z. analyzed the data and prepared the figures. T.Z. and K.Z. wrote the manuscript. T.C., U.S. and K.Z. supervised the project. All authors reviewed the manuscript and contributed to discussions.

Competing interests

The authors declare no competing interests.

Additional information

Correspondence and requests for materials should be addressed to T.Z.

Reprints and permissions information is available at www.nature.com/reprints.

Publisher's note Springer Nature remains neutral with regard to jurisdictional claims in published maps and institutional affiliations.



Open Access This article is licensed under a Creative Commons Attribution 4.0 International License, which permits use, sharing, adaptation, distribution and reproduction in any medium or format, as long as you give appropriate credit to the original author(s) and the source, provide a link to the Creative Commons licence, and indicate if changes were made. The images or other third party material in this article are included in the article's Creative Commons licence, unless indicated otherwise in a credit line to the material. If material is not included in the article's Creative Commons licence and your intended use is not permitted by statutory regulation or exceeds the permitted use, you will need to obtain permission directly from the copyright holder. To view a copy of this licence, visit <http://creativecommons.org/licenses/by/4.0/>.

© The Author(s) 2021