

UC Riverside

UC Riverside Previously Published Works

Title

Treatment-induced arteriolar revascularization and miR-126 enhancement in bone marrow niche protect leukemic stem cells in AML

Permalink

<https://escholarship.org/uc/item/5qq7x2w0>

Journal

Journal of Hematology & Oncology, 14(1)

ISSN

1756-8722

Authors

Zhang, Bin

Nguyen, Le Xuan Truong

Zhao, Dandan

et al.

Publication Date

2021-12-01

DOI

10.1186/s13045-021-01133-y


Peer reviewed

RESEARCH

Open Access



Treatment-induced arteriolar revascularization and miR-126 enhancement in bone marrow niche protect leukemic stem cells in AML

Bin Zhang^{1*†}, Le Xuan Truong Nguyen^{1†}, Dandan Zhao^{1†}, David E. Frankhouser², Huafeng Wang^{1,3}, Dinh Hoa Hoang¹, Junjing Qiao^{1,4}, Christina Abundis¹, Matthew Brehove⁵, Yu-Lin Su⁶, Yuxin Feng⁷, Anthony Stein¹, Lucy Ghoda¹, Adrienne Dorrance⁸, Danilo Perrotti⁹, Zhen Chen¹⁰, Anjia Han⁴, Flavia Pichiorri¹, Jie Jin³, Tijana Jovanovic-Talisan⁵, Michael A. Caligiuri¹, Calvin J. Kuo¹¹, Akihiko Yoshimura¹², Ling Li¹, Russell C. Rockne¹³, Marcin Kortylewski⁶, Yi Zheng⁷, Nadia Carlesso¹, Ya-Huei Kuo¹ and Guido Marcucci^{1*} 

Abstract

Background: During acute myeloid leukemia (AML) growth, the bone marrow (BM) niche acquires significant vascular changes that can be offset by therapeutic blast cytoreduction. The molecular mechanisms of this vascular plasticity remain to be fully elucidated. Herein, we report on the changes that occur in the vascular compartment of the FLT3-ITD+ AML BM niche pre and post treatment and their impact on leukemic stem cells (LSCs).

Methods: BM vasculature was evaluated in FLT3-ITD+ AML models (*Mll*^{PTD/WT}/*Flt3*^{ITD/ITD} mouse and patient-derived xenograft) by 3D confocal imaging of long bones, calvarium vascular permeability assays, and flow cytometry analysis. Cytokine levels were measured by Luminex assay and miR-126 levels evaluated by Q-RT-PCR and miRNA staining. Wild-type (wt) and *Mll*^{PTD/WT}/*Flt3*^{ITD/ITD} mice with endothelial cell (EC) miR-126 knockout or overexpression served as controls. The impact of treatment-induced BM vascular changes on LSC activity was evaluated by secondary transplantation of BM cells after administration of tyrosine kinase inhibitors (TKIs) to *Mll*^{PTD/WT}/*Flt3*^{ITD/ITD} mice with/without either EC miR-126 KO or co-treatment with tumor necrosis factor alpha (TNF α) or anti-miR-126 miRisten.

Results: In the normal BM niche, CD31⁺Sca-1^{high} ECs lining arterioles have miR-126 levels higher than CD31⁺Sca-1^{low} ECs lining sinusoids. We noted that during FLT3-ITD+ AML growth, the BM niche lost arterioles and gained sinusoids. These changes were mediated by TNF α , a cytokine produced by AML blasts, which induced EC miR-126 downregulation and caused depletion of CD31⁺Sca-1^{high} ECs and gain in CD31⁺Sca-1^{low} ECs. Loss of miR-126^{high} ECs led to a decreased EC miR-126 supply to LSCs, which then entered the cell cycle and promoted leukemia growth. Accordingly, antileukemic treatment with TKI decreased the BM blast-produced TNF α and increased miR-126^{high} ECs and the EC

*Correspondence: bzhang@coh.org; gmarcucci@coh.org

[†]Bin Zhang, Le Xuan Truong Nguyen, and Dandan Zhao have contributed equally

¹ Department of Hematological Malignancies Translational Science, Gehr Family Center for Leukemia Research, City of Hope Medical Center and Beckman Research Institute, 1500 E Duarte Road, Duarte, CA 91010, USA

Full list of author information is available at the end of the article



© The Author(s) 2021. **Open Access** This article is licensed under a Creative Commons Attribution 4.0 International License, which permits use, sharing, adaptation, distribution and reproduction in any medium or format, as long as you give appropriate credit to the original author(s) and the source, provide a link to the Creative Commons licence, and indicate if changes were made. The images or other third party material in this article are included in the article's Creative Commons licence, unless indicated otherwise in a credit line to the material. If material is not included in the article's Creative Commons licence and your intended use is not permitted by statutory regulation or exceeds the permitted use, you will need to obtain permission directly from the copyright holder. To view a copy of this licence, visit <http://creativecommons.org/licenses/by/4.0/>. The Creative Commons Public Domain Dedication waiver (<http://creativecommons.org/publicdomain/zero/1.0/>) applies to the data made available in this article, unless otherwise stated in a credit line to the data.

miR-126 supply to LSCs. High miR-126 levels safeguarded LSCs, as shown by more severe disease in secondary transplanted mice. Conversely, EC miR-126 deprivation via genetic or pharmacological EC miR-126 knock-down prevented treatment-induced BM miR-126^{high} EC expansion and in turn LSC protection.

Conclusions: Treatment-induced CD31⁺Sca-1^{high} EC re-vascularization of the leukemic BM niche may represent a LSC extrinsic mechanism of treatment resistance that can be overcome with therapeutic EC miR-126 deprivation.

Keywords: Acute myeloid leukemia, BM vascular niche, TNF α , miR-126, Leukemic stem cell, Treatment resistance

Background

Acute myeloid leukemia (AML) is a hematopoietic malignancy characterized by somatic mutations occurring in the hematopoietic stem cells (HSCs) and progenitor cells that block hematopoietic differentiation and promote accumulation of leukemic “blasts” in the bone marrow (BM) and/or other extramedullary organs [1]. To date, despite a deep molecular understanding of the pathogenesis, the development of molecular targeting therapeutics and the broadened use of allogeneic HSC transplantation, the overall outcome of AML patients remains poor. Disease refractoriness to initial therapy or post-remission disease relapse [2] are likely due to persistence of treatment-resistant leukemic stem cells (LSCs) [3]. These are primitive leukemic cells capable of unlimited self-renewal and disease initiation [4, 5] and reside in a leukemic BM niche that also comprises several types of non-hematopoietic cells and that preferentially supports homeostasis and competitive growth of LSCs over those of HSCs [6, 7].

Mechanisms of treatment resistance in cancer are multifaceted and often result from the acquisition of genetic mutations that enable malignant cells to escape the therapeutic pressure. Recently, other non-genetic mechanisms of treatment resistance have been also described [8]. While these reported mechanisms have been mainly reported as intrinsic to malignant cells, it is possible that they also include mechanisms that are extrinsic to malignant cells, such as those involving the microenvironment and that protect malignant cells during treatment exposure [7].

Utilizing the FMS-like tyrosine kinase 3 (*FLT3*) gene internal tandem duplication (ITD) (*FLT3*-ITD) knock-in mouse and *FLT3*-ITD⁺ AML patient-derived xenograft (PDX) models that recapitulate features of human *FLT3*-ITD⁺ AML, we report here on previously unrecognized non-genetic, extrinsic mechanisms of treatment resistance in LSCs that involve the vascular compartment of the leukemic BM niche and that are mediated by a TNF α -miR-126 axis in the BM endothelial cells (ECs). *FLT3*-ITD occurs in approximately 25% of AML patients and the mutated gene encodes a mutant receptor with aberrant, ligand-independent tyrosine kinase (TK) activity that confers growth and

survival advantages to leukemic blasts [9]. *FLT3*-ITD⁺ AML patients are treated with TK inhibitors (TKIs) in combination with chemotherapy. Although the addition of TKIs to chemotherapy confers a clinical advantage compared to chemotherapy alone, it is not curative in the majority of cases, suggesting treatment resistance arising over time [10].

Methods

An extended description of the methods is in the Additional file 1.

Human samples

Normal peripheral blood (PB) and BM samples were obtained from healthy donors at the City of Hope National Medical Center (COHNMC). AML samples were obtained from patients from the COHNMC (Additional file 1: Table S1). Mononuclear cells (MNCs) were isolated using Ficoll separation. When necessary, CD34⁺ cells were then isolated using a positive magnetic bead selection protocol (Miltenyi Biotech, Germany). Sample acquisition was approved by the Institutional Review Boards at the COHNMC, in accordance with an assurance filed with and approved by the Department of Health and Human Services and met all requirements of the Declaration of Helsinki. Healthy donors and AML patients were consented on the IRB # 06229 and IRB# 18067 protocols, respectively.

Animal studies

The *Mll*^{PTD/WT}/*Flt3*^{ITD/ITD} mouse, an AML model in C57Bl/6J (B6) background (CD45.2), was generated and genotyped as previously described [11]. The *Mll*^{PTD/WT}/*Flt3*^{ITD/ITD} mice (CD45.2, B6) were also bred with CD45.1 B6 mice to produce CD45.1/CD45.2 *Mll*^{PTD/WT}/*Flt3*^{ITD/ITD} mice as donors for transplant experiments. To obtain conditional miR-126 knock-out (KO) or *Spred1* KO in ECs, we bred miR-126^{lox/lox} (CD45.2 B6) [12] and *Spred1*^{lox/lox} (CD45.2 B6) [13] mice with *Tie2-cre* (CD45.2 B6, from The Jackson Laboratory, 008863) mice and obtained *miR-126*^{lox/lox}*Tie2-cre*⁺ (EC miR-126 KO, also called *miR-126*^{EC Δ / Δ}) and *Spred1*^{lox/lox}*Tie2-cre*⁺ (EC *Spred1* KO, also called *Spred1*^{EC Δ / Δ} , representing a functional EC miR-126 overexpressing model) mice.

Tie2-CreER/TdTomato/Tg(Ly6a-GFP) double fluorescent EC/Sca-1 reporter mice were generated by crossing *Tie2-CreER/TdTomato* mice (CD45.2 B6), in which BM ECs bearing the *Tie2*-promoter driven *TdTomato* color upon tamoxifen administration (EC-*tdTomato*⁺, EC reporter mice) [14, 15], with *Tg(Ly6a-EGFP)* (Sca-1-GFP⁺, Sca-1 reporter mice, from The Jackson Laboratory, 012643), which allowed us to visualize Sca-1^{high} EC (*tdTomato*⁺GFP^{high}) and Sca-1^{low} EC (*tdTomato*⁺GFP^{low}) lined vessels based on the combined expression of these two endogenous reporters. To obtain conditional EC miR-126 KO reporter mice, we also bred *Tie2-CreER/TdTomato/Tg(Ly6a-GFP)* double fluorescent reporter mice with *miR-126^{flox/flox}* mice and obtained inducible EC miR-126 KO reporter mice [i.e., *miR-126^{flox/flox}/Tie2-CreER/TdTomato/Tg(Ly6a-GFP)*, miR-126 KO in ECs upon tamoxifen administration].

To evaluate the impact of EC miR-126 on leukemia-induced vascular changes and in turn on LSC burden, BM MNCs from AML (i.e., *Mll^{PTD/WT}/Flt3^{ITD}*, CD45.1/CD45.2 B6) or from normal wild-type (wt, CD45.1 B6) mice were transplanted into Cre⁺ or Cre-*miR-126^{flox/flox}/Tie2-cre*, *Spred1^{flox/flox}/Tie2-cre*, and tamoxifen-treated *miR-126^{flox/flox}/Tie2-CreER/TdTomato/Tg(Ly6a-GFP)* reporter mice (all CD45.2 B6). To study the vascular changes induced by human FLT3-ITD+ AML blast growth, NOD.Cg-Prkdc^{scid} Il2rg^{tm1Wjl} Tg(CMV-IL3, CSF2, KITLG)1Eav/MloySzj mice (NSG-SGM3 or NSGS, from The Jackson Laboratory, 013062) were transplanted with normal cord blood (CB) CD34⁺ cells or with human FLT3-ITD+ AML blasts (patient-derived xenograft, PDX).

Immunofluorescent staining and 3D confocal imaging of long bones

Long bones (femurs and/or tibias) from the mice were processed, sectioned and imaged as described previously [16] with ad-hoc modifications (see Additional file 1 for details).

Intravital imaging

Intravital confocal microscopy was used to image the calvarium BM vasculature to study the vascular permeability, as previously described [17] (see Additional file 1 for details).

Statistical analysis

Comparison between groups was performed by two-tailed, paired or unpaired Student's *t*-test, adjusting for multiple comparisons as appropriate. The log-rank test was used to assess significant differences between survival curves. All statistical analyses were performed using Prism version 8.0 software (GraphPad Software). Sample

sizes chosen are indicated in the individual figure legends and were not based on formal power calculations to detect prespecified effect sizes but were based on previous experience with similar models. All of the in vitro experiments were performed 3–6 times using biologically independent samples; the in vivo experiments were performed using 6–16 mice in each group. *p* values < 0.05 were considered significant. Results shown represent mean ± SEM. **p* ≤ 0.05, ***p* < 0.01, ****p* < 0.001, *****p* < 0.0001.

Results

Bone marrow vasculature of normal and leukemic mice

To determine how the vascular compartment of the BM niche adapts to leukemia growth and subsequently to antileukemic treatments, we performed immunofluorescence staining and 3D confocal imaging of vessels in the long bones of normal versus (vs) leukemic mice. To this end, we first analyzed normal mice and identified CD31⁺α-SMA⁺Sca-1^{high}Emcn⁻ vessels as arteries (Additional file 1: Fig. S1a–c, blue arrow), CD31⁺α-SMA⁻Sca-1^{high}Emcn⁻ vessels as arterioles (Additional file 1: Fig. S1a–e, yellow arrow), and CD31⁺α-SMA⁻Sca-1^{low}Emcn⁺ vessels as sinusoids (Additional file 1: Fig. S1a–e, white arrow) [18–21]. In a double fluorescent reporter mouse [i.e., tamoxifen-treated *Tie2-CreER/TdTomato/Tg(Ly6a-GFP)*], Sca-1^{high} EC (i.e., *tdTomato*⁺GFP^{high}) and Sca-1^{low} EC (i.e., *tdTomato*⁺GFP^{low}) lined vessels were also morphologically consistent respectively with arteries and arterioles (both are *tdTomato*⁺GFP^{high} but with different size; Additional file 1: Fig. S1f, blue arrow indicates artery and yellow arrows indicate arteriole) and sinusoids (Additional file 1: Fig. S1f, white arrow). Since Sca-1^{high} expression appeared to be restricted to arteries and arterioles, we then utilized a simplified CD31⁺Sca-1^{high} and CD31⁺Sca-1^{low} staining along with morphology examination to mark respectively arterioles and sinusoids in the BM niche [19, 22].

To study changes of the vascular compartment of the BM niche during leukemia growth, we then utilized the *Mll^{PTD/WT}/Flt3^{ITD/ITD}* mouse, a model that recapitulates phenotypic, cytogenetic, molecular and pathological features of human FLT3-ITD+ AML, a relatively frequent molecular subset of the disease [11]. Of note, we will refer hereafter to “wt” or “*Mll^{PTD/WT}/Flt3^{ITD/ITD}*” to indicate the mouse genotype and to “normal” or “leukemic” to indicate the disease status.

Firstly, we noticed a significant decrease in CD31⁺Sca-1^{high} EC lined vessels (i.e., arterioles) in the leukemic *Mll^{PTD/WT}/Flt3^{ITD/ITD}* mice compared with normal wt mice (Fig. 1a; Additional file 1: Fig. S2a). These results were corroborated by a flow cytometry

analysis showing an overall increase in total BM ECs (CD45⁻Ter119⁻CD31⁺) in the leukemic mice (Additional file 1: Fig. S2b, c) but with a lower frequency of CD31⁺Sca-1^{high} ECs and a higher frequency of CD31⁺Sca-1^{low} ECs compared with normal wt mice (Fig. 1b; Additional file 1: Fig. S2d). Similar results were also obtained when normal wt mice were engrafted with BM MNCs from congenic leukemic *Mll*^{P^{TD}/WT}/*Flt3*^{ITD/ITD} donors and compared with controls engrafted with BM MNCs from congenic normal wt donors (Fig. 1c, d; Additional file 1: Fig. S2e).

To validate these findings, we then transplanted BM MNCs from leukemic *Mll*^{P^{TD}/WT}/*Flt3*^{ITD/ITD} mice or from normal wt mice into the tamoxifen-induced Tie2-CreER/TdTomato/Tg(Ly6a-GFP) double reporter mice. At 4 weeks after transplantation, we observed reduced Sca-1^{high} EC-lined vessels (i.e., tdTomato⁺ GFP^{high}) in the recipients of AML BM MNCs compared with recipients of normal BM MNCs (Fig. 1e; Additional file 1: Fig. S2f). Consistent with these results, flow cytometry showed reduced Sca-1^{high} ECs (i.e., tdTomato⁺ GFP^{high}) and increased Sca-1^{low} ECs (i.e., tdTomato⁺ GFP^{low}) in the double reporter mice engrafted with AML BM MNCs compared with those engrafted with normal BM MNCs (Fig. 1f; Additional file 1: Fig. S2g).

Next, to assess the relevance of these changes to the human disease, we transplanted human primary FLT3-ITD+ AML blasts into NSG-SGM3 (NSGS) mice and generated a patient-derived xenograft (PDX) model. Similar to the murine AML models, the FLT3-ITD+ PDX showed fewer BM CD31⁺Sca1^{high} ECs and arterioles as compared with NSGS mice engrafted with normal CB CD34⁺ cells (Fig. 1g, h; Additional file 1: Fig. S3).

In the BM niche, CD31⁺Sca-1^{high} ECs reportedly line impermeable vessels such as arteries and arterioles, and

CD31⁺Sca-1^{low} ECs border permeable vessels such as sinusoids [21]. To this end, we imaged the calvarium of normal Sca-1 reporter [i.e., Tg(Ly6a-GFP)] mice with intravital confocal microscopy. Prior to imaging, mice were administered TRITC-dextran (150 kDa, red) intravenously to identify the vasculature [23, 24]. As expected, dextran leakage was visible as diffuse staining preferentially around Sca-1-GFP^{low} vessels, rather than Sca-1-GFP^{high} vessels (Additional file 1: Fig. S4). Consistent with a decrease in CD31⁺Sca-1^{high} vessels (i.e., arterioles) (Fig. 1a, g), we observed increased vessel permeability in the *Mll*^{P^{TD}/WT}/*Flt3*^{ITD/ITD} AML mouse (TRITC-150 kDa dextran, red) and FLT3-ITD+ PDX (FITC-150 kDa dextran, green) (Additional file 1: Fig. S5a, b). Similar results were obtained when we transplanted BM MNCs from leukemic *Mll*^{P^{TD}/WT}/*Flt3*^{ITD/ITD} mice or from normal wt mice into wt (FITC-150 kDa dextran, green; Additional file 1: Fig. S5c), EC reporter (i.e., tamoxifen-treated Tie2-CreER/TdTomato; FITC-150 kDa dextran, green; Additional file 1: Fig. S5d), or EC/Sca-1 double reporter [i.e., tamoxifen-treated Tie2-CreER/TdTomato/Tg(Ly6a-EGFP); Alex647-150 kDa dextran, blue; Additional file 1: Fig. S5e] recipient mice.

Thus, using different AML models and imaging techniques, flow cytometric analyses and permeability studies of the BM niche, we showed that FLT3-ITD+ AML growth led to a decrease of CD31⁺Sca-1^{high} vessels (i.e., arterioles) in the BM niche.

TNF α mediates loss of CD31⁺Sca-1^{high} vessels in the leukemic BM niche

To gain insights into the mechanisms leading to CD31⁺Sca-1^{high} EC and arteriole depletion in the BM niche during leukemia growth, we hypothesized that these effects could be associated with certain secretory

(See figure on next page.)

Fig. 1 Vascular remodeling of the leukemic BM niche. **a** CD31 (FITC) and Sca-1 (PE) immunofluorescence (IF) staining (left) and quantification (right) of CD31⁺Sca-1^{high} EC-lined vessels (i.e., arterioles) in the femurs from normal wt and AML mouse ($n = 3$ mice per group). **b** Representative plots (left) and aggregate results (right) of BM EC Sca-1^{high} and Sca-1^{low} subfractions from normal wt and AML mouse by flow cytometry analysis ($n = 4$ mice per group). **c** CD31 (FITC) and Sca-1 (PE) IF staining (left) and quantification (right) of CD31⁺Sca-1^{high} EC-lined vessels (i.e., arterioles) in the tibias from wt recipient mice receiving BM mononuclear cells (MNCs) from normal mice (Normal or NL to wt, 1×10^6 /mouse, $n = 4$ mice) or from diseased *Mll*^{P^{TD}/WT}/*Flt3*^{ITD/ITD} AML mice (AML to wt, 1×10^6 /mouse, $n = 4$ mice). **d** Representative plots (left) and aggregate results (right) of BM EC Sca-1^{high} and Sca-1^{low} subfractions from the same mice as in (c). **e** Confocal imaging of EC-tdTomato and Sca-1-GFP (left) and quantification (right) of Sca-1-GFP^{high} EC-lined vessels (i.e., arterioles) in the tibias from tamoxifen-treated Tie2-CreER/TdTomato/Tg(Ly6a-GFP) recipient mice receiving BM MNCs from normal wt mice (Normal or NL to reporter, 1×10^6 /mouse, $n = 4$ mice) or from leukemic *Mll*^{P^{TD}/WT}/*Flt3*^{ITD/ITD} mice (AML to reporter, 1×10^6 /mouse, $n = 4$ mice). BM engraftment rates were more than 70% when the mice were analyzed. **f** Representative plots (left) and aggregate results (right) of BM Sca-1-GFP^{high} and Sca-1-GFP^{low} subfractions in BM ECs (CD45⁻Ter119⁻tdTomato⁺) from the same mice as in (e). **g** CD31 (FITC) and Sca-1 (PE) IF staining (left) and quantification (right) of CD31⁺Sca-1^{high} EC-lined vessels (i.e., arterioles) in the tibias from NSGS mice receiving CB CD34⁺ cells (1×10^5 /mouse, $n = 3$ mice) or receiving human FLT3-ITD+ AML blasts (2×10^6 /mouse, $n = 3$ mice). BM engraftment rates were more than 70% when the mice were analyzed. **h** Representative plots (left) and aggregate results (right) of BM EC Sca-1^{high} and Sca-1^{low} subfractions from the same mice as in (g). For **a**, **c**, and **g**: yellow arrows indicate CD31⁺Sca-1^{high} EC-lined vessels; white arrows indicate CD31⁺Sca-1^{low} EC-lined vessels; for **e**: yellow arrows indicate Sca-1^{high} EC-lined vessels (i.e., tdTomato⁺GFP^{high}); white arrows indicate Sca-1^{low} EC-lined vessels (i.e., tdTomato⁺GFP^{low}); scale bars represent a size of 100 μ m. Results represent mean \pm SEM. Significance values: * $p < 0.05$; ** $p < 0.01$; *** $p < 0.001$; ns not significant

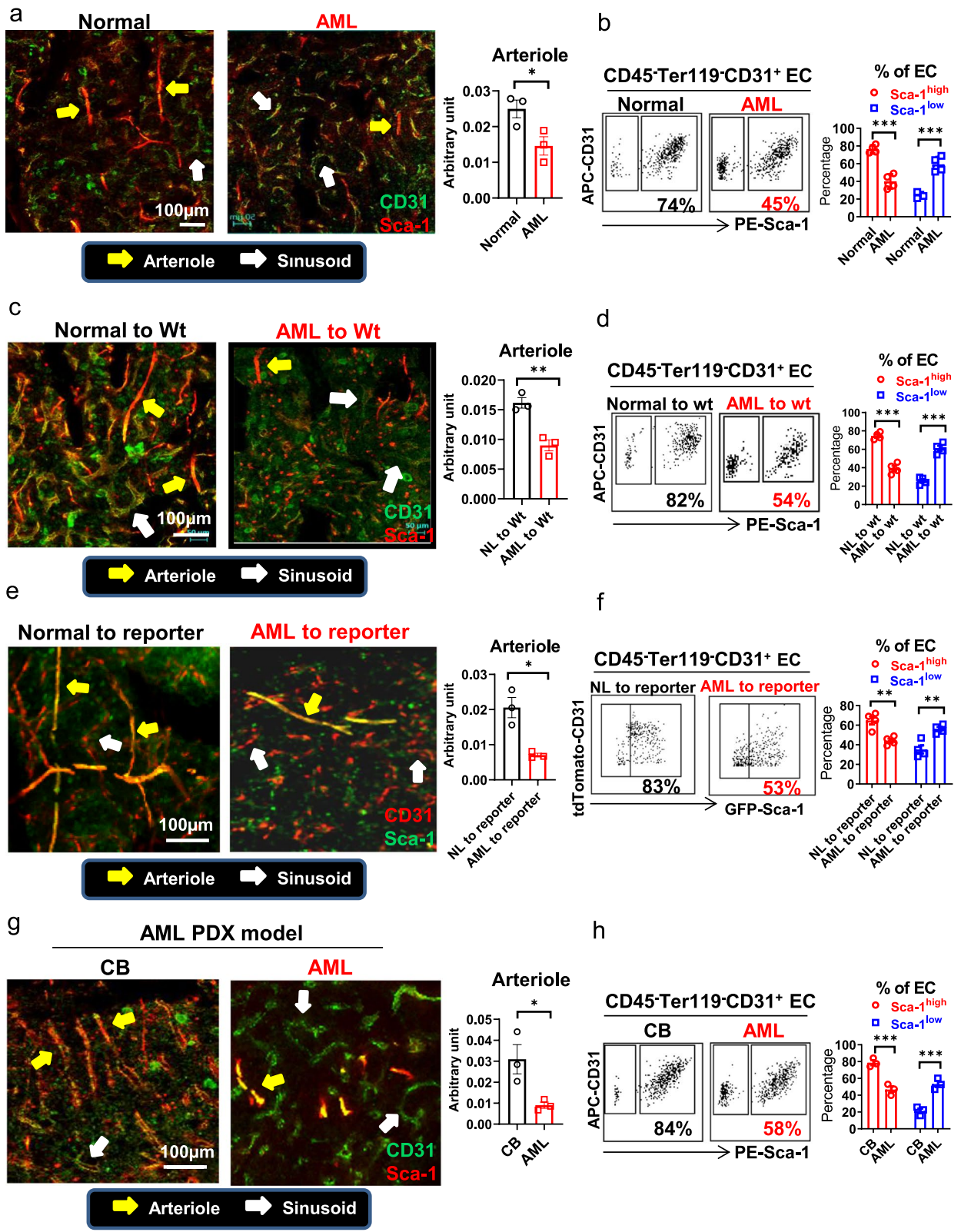


Fig. 1 (See legend on previous page.)

features of the proliferating leukemic blasts. We therefore measured levels of cytokines and chemokines in the blood and BM of age- and gender-matched leukemic *Mll^{PTD/WT}/Flt3^{ITD/ITD}* and normal wt mice. TNF α was the only cytokine significantly elevated in the BM of leukemic mice (Fig. 2a, left; Additional file 1: Fig. S6a–m). Higher TNF α mRNA levels were observed in myeloid cells and CD45⁺Lin⁻ progenitors [i.e., Lin⁻Sca-1⁻c-Kit⁻ (L⁻S⁻K⁻) and Lin⁻Sca-1⁺c-Kit⁺ (LSK)] from the leukemic *Mll^{PTD/WT}/Flt3^{ITD/ITD}* mice compared to the counterparts from normal wt mice (Fig. 2a, right), suggesting an overproduction of this cytokine by the clonal myeloid subpopulations in the leukemic mice. In vitro treatment of BM ECs from normal wt mice with murine recombinant (mr) TNF α (mrTNF α : 1 ng/ml) for 96 h (h) recapitulated the observations in the leukemic mice, with an expansion of ECs (Fig. 2b), a decrease of CD31⁺Sca-1^{high} EC subfraction and an increase of CD31⁺Sca-1^{low} EC subfraction (Fig. 2c; Additional file 1: Fig. S7a). Both TNF α receptor type 1 and 2 (TNF α R1 and TNF α R2) were found to be co-expressed on the surface of CD31⁺Sca-1^{high} ECs (Additional file 1: Fig. S7b) and TNF α R1 and TNF α R2 blocking antibodies (Abs) reversed the mrTNF α effect (Additional file 1: Fig. S7c).

Consistent with these results, normal wt mice given mrTNF α [1 μ g/day, intraperitoneal (ip) injection, 3 weeks] [25, 26] showed a significant increase of BM ECs (Fig. 2d), and loss of CD31⁺Sca-1^{high} ECs and arterioles compared with vehicle-treated controls (Fig. 2e, f). Accordingly, normal wt mice engrafted with BM from leukemic *Mll^{PTD/WT}/Flt3^{ITD/ITD}* donors had higher levels of BM TNF α (Additional file 1: Fig. S7d) and loss of CD31⁺Sca-1^{high} ECs and arterioles (Fig. 1c, d; Additional file 1: Fig. S2e), compared with mice engrafted with BM from normal wt donors. Similar results were obtained in NSGS mice engrafted with human FLT3-ITD⁺ AML blasts compared with NSGS mice engrafted with normal CB CD34⁺ cells (Fig. 1g, h; Additional file 1: Fig. S3, S7e,

f). In vivo treatment of *Mll^{PTD/WT}/Flt3^{ITD/ITD}* AML mice with TNF α -neutralizing Ab (anti-TNF α ; MP6-XT22, Biolegend; 1 mg/day, ip, 4 times/week for 3 weeks) [27] rescued the loss of CD31⁺Sca-1^{high} ECs and arterioles (Fig. 2g, h) otherwise observed in the leukemic BM niche.

Taken altogether, these results support a TNF α -induced depletion of CD31⁺Sca-1^{high} vessels in the leukemic BM niche during FLT3-ITD⁺ AML growth.

TNF α depletes CD31⁺Sca-1^{high} ECs via miR-126 downregulation

The vascular changes induced by TNF α in BM niche were strikingly similar to what we observed in the mice with miR-126 KO in ECs (*miR-126^{lox/lox}Tie2-cre⁺*, hereafter called *miR-126^{EC Δ/Δ}*) obtained by crossing *miR-126^{lox/lox}* with Tie2-cre mice. This led us to hypothesize that TNF α induces vascular changes during leukemia growth partly via miR-126 downregulation. To this end, it has been reported that in mature ECs, miR-126 contributes to the maintenance of vascular integrity and inhibition of endothelial permeability, which are main features of arterial and arteriolar vessels [12, 28, 29]. In the normal mouse BM niche, we found that ECs expressed at least a log-fold higher level of miR-126 than normal long-term (LT) HSCs (LSK Fit3⁻CD150⁺CD48⁻) and other non-hematopoietic stromal cells, including osteoblasts (OBs; CD45⁻Ter119⁻CD31⁻CD166⁺Sca-1⁻) and mesenchymal stromal progenitors (MSPs; CD45⁻Ter119⁻CD31⁻CD166⁻Sca-1⁺) [30] (Additional file 1: Fig. S8a, b). Within the ECs, Sca-1^{high} ECs expressed significantly higher levels of miR-126 (Additional file 1: Fig. S8c, d) and lower levels of miR-126 verified targets (i.e., *Vcam1* and *Spred1*) [12, 28, 29] (Additional file 1: Fig. S8e) than Sca-1^{low} ECs. In addition, transcriptomes of Sca-1^{high} and Sca-1^{low} ECs from normal wt mice showed different gene expression profiles (Additional file 1: Fig. S8f), with pathways regulating angiogenesis, cell migration and vasculature development being

(See figure on next page.)

Fig. 2 TNF α mediates loss of CD31⁺Sca-1^{high} vessels in the BM niche of FLT3-ITD⁺ AML. **a** Levels of TNF α (pg/ml, left) in the BM and blood analyzed by Luminex assay ($n = 10$ mice per group) and levels of TNF α mRNA (right) in the BM CD45⁺ cell subpopulations analyzed by Q-RT-PCR ($n = 4-7$ mice for each population) from wt and *Mll^{PTD/WT}/Flt3^{ITD/ITD}* AML mice. **b** and **c** Number of ECs from normal wt mice after in vitro exposure to murine recombinant (mr) TNF α (1 ng/ml) or vehicle for 96 h (**b**) and frequency of Sca-1^{high} EC subfraction after in vitro exposure to mrTNF α (0, 0.2, 1 and 10 ng/ml) for 96 h (**c**), analyzed by flow cytometry. One of the three independent experiments with similar results is shown. **d-f** Normal wt mice treated with vehicle or mrTNF α (1 μ g/day, ip, 3 weeks) were evaluated by flow cytometry ($n = 4$ mice per group) for frequencies of BM ECs (**d**) and Sca-1^{high} and Sca-1^{low} EC subfractions (**e**, left, representative plots; right, aggregate results) and by tibial CD31 (FITC) and Sca-1 (PE) IF staining (**f**, left) and quantification (**f**, right; $n = 3$ mice per group) of CD31⁺Sca-1^{high} EC-lined vessels. For **f**: yellow arrows indicate CD31⁺Sca-1^{high} EC-lined vessels; white arrows indicate CD31⁺Sca-1^{low} EC-lined vessels. Scale bars represent a size of 100 μ m. **g** and **h** Diseased *Mll^{PTD/WT}/Flt3^{ITD/ITD}* AML mice treated with IgG or anti-TNF α Abs (1 mg/day, ip, 4 times/week, 3 weeks; $n = 4$ mice per group) were evaluated by flow cytometry for frequencies of BM Sca-1^{high} and Sca-1^{low} EC subfractions (**g**, left, representative plots; right, aggregate results) and by tibial CD31 (FITC) and Sca-1 (PE) IF staining (**h** left) and quantification (**h** right) of CD31⁺Sca-1^{high} EC-lined vessels. For **h**: yellow arrows indicate CD31⁺Sca-1^{high} EC-lined vessels; white arrows indicate CD31⁺Sca-1^{low} EC-lined vessels. Scale bars represent a size of 100 μ m. Results represent mean \pm SEM. Significance values: * $p < 0.05$; ** $p < 0.01$; *** $p < 0.001$; ns not significant

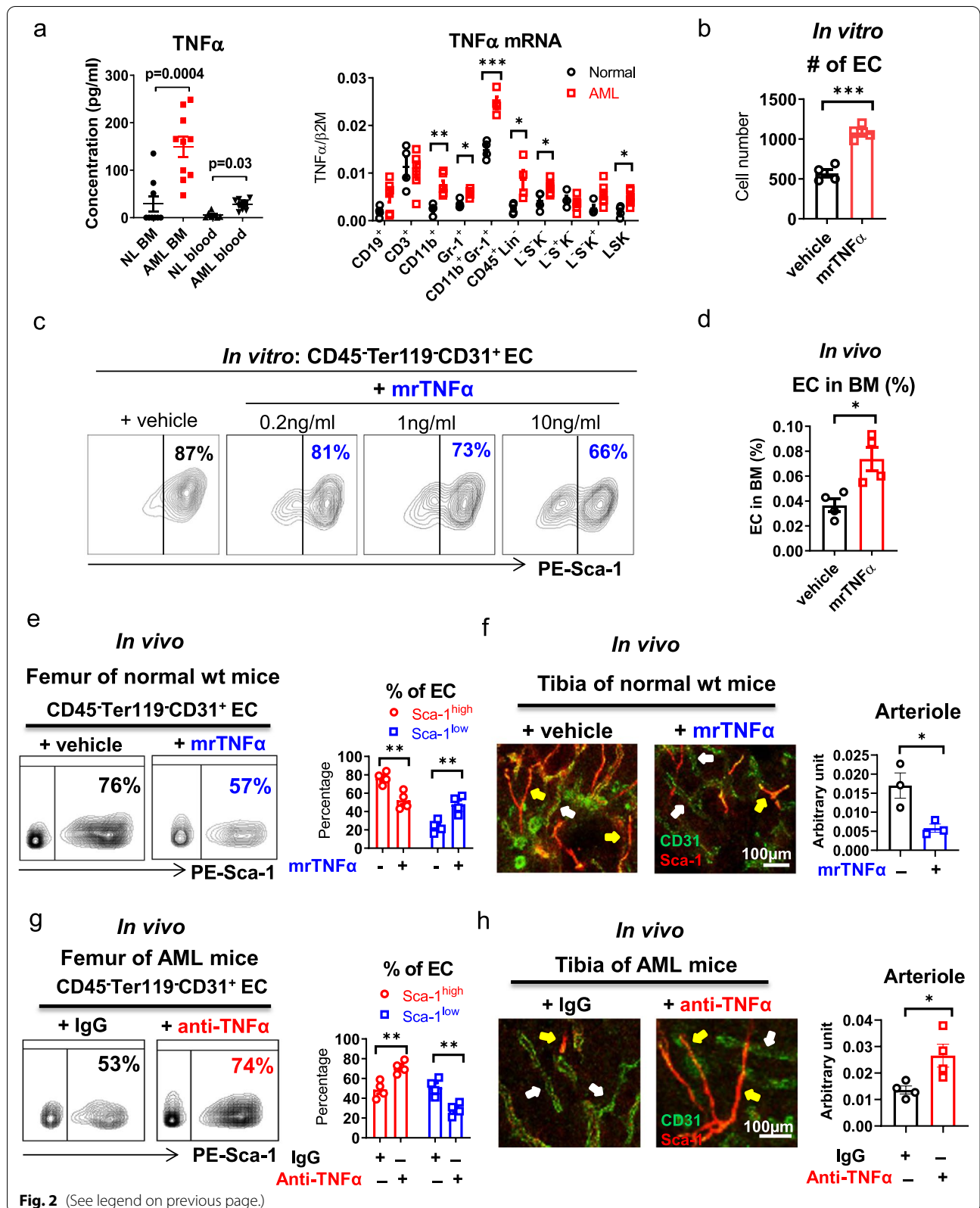


Fig. 2 (See legend on previous page.)

activated in Sca-1^{high} ECs (Additional file 1: Table S2). Q-RT-PCR assays (Additional file 1: Table S3) validated these findings (Additional file 1: Fig. S8g, right panel).

Interestingly, we noticed that miR-126 knock-down (KD) by miRZip anti-miR-126 lentiviral transduction (Fig. 3a, Additional file 1: Fig. S9a) or treatment with a CpG-miR-126 inhibitor [31] (an anti-miR-126 oligonucleotide hereafter called miRisten; Additional file 1: Fig. S9b, c) depleted the Sca-1^{high} fraction in CD31⁺Sca-1^{high} ECs from normal wt mice. Conversely, miR-126 over-expression (OE) in CD31⁺Sca-1^{low} ECs obtained by transduction with miR-126 precursor lentivirus (Fig. 3b) or treatment with CpG-miR-126 mimics (Additional file 1: Fig. S9d, e) enriched the Sca-1^{high} fraction. In vivo, mice with EC miR-126 KO (i.e., *miR-126^{ECΔ/Δ}*; Fig. 3c, middle box) [12, 31] had fewer CD31⁺Sca-1^{high} ECs and arterioles than *miR-126^{lox/lox}Tie2-cre-* controls (Fig. 3d–g, middle panel). Fluorescent reporter mice with tamoxifen-induced miR-126 KO in ECs [i.e., tamoxifen-treated *miR-126^{lox/lox}/Tie2-CreER/TdTomato/Tg(Ly6a-GFP)*] also showed fewer Sca-1^{high} ECs (i.e., tdTomato⁺GFP^{high}) and arterioles than wt reporter mice [i.e., tamoxifen-treated *miR-126^{wt/wt}/Tie2-CreER/TdTomato/Tg(Ly6a-GFP)*] (Additional file 1: Fig. S9f, g). Furthermore, normal wt mice treated in vivo with miRisten (20 mg/kg/day, iv) for 3 weeks showed fewer CD31⁺Sca-1^{high} ECs and vessels (i.e., arterioles) than control mice treated with CpG-scramble (SCR) (Fig. 3h, i). In addition, similar to the leukemic mice, *miR-126^{ECΔ/Δ}* mice had an increase of the BM vessel permeability compared to wt controls (Additional file 1: Fig. S9h).

We previously reported that *Spred1*, a member of the Sprouty family of proteins and an inhibitor of RAS small GTPases, is both a miR-126 target and a regulator of miR-126 biogenesis [31]. EC *Spred1* KO mice (i.e., *Spred1^{ff}Tie2-cre+*, hereafter called *Spred1^{ECΔ/Δ}*) [13, 32, 33] therefore express constitutively higher levels of EC miR-126 than *Spred1^{ff}Tie2-cre-* and *miR-126^{ECΔ/Δ}* mice

(Fig. 3c, right box) and represent a functional model for EC miR-126 OE. Accordingly, *Spred1^{ECΔ/Δ}* mice had more BM CD31⁺Sca-1^{high} ECs and vessels (i.e., arterioles) than wt controls (Fig. 3d–g, right panel).

Taken altogether, these results support a role of miR-126 in determining enrichment of the Sca-1^{high} EC fraction and in turn arteriolar density in the BM niche and a role of TNFα-dependent miR-126 downregulation in the loss of arterioles during leukemia growth.

To this end, we also observed significantly lower BM EC miR-126 levels in the leukemic *Mu^{PTD/WT}/Flt3^{ITD/ITD}* mice (Fig. 4a) in addition to fewer BM CD31⁺Sca-1^{high} ECs and vessels (i.e., arterioles; Fig. 1a, b; Additional file 1: Fig. S2a) compared with normal wt controls. Similar changes were observed in normal wt mice engrafted with AML BM MNCs compared with those engrafted with normal BM MNCs (Figs. 1c, d and 4b; Additional file 1: Fig. S2e). Furthermore, murine BM ECs obtained from normal wt mice treated in vitro with mrTNFα (1 ng/ml, 24 h) showed reduced levels of pri/pre- and mature miR-126 (Fig. 4c) and increased levels of miR-126 targets (i.e., *Vcam1* and *Spred1*) (Fig. 4d). Co-treatment with miR-126 mimics rescued the loss of the CD31⁺Sca-1^{high} fraction induced by mrTNFα (Additional file 1: Fig. S10a, b, right panel). TNFαR1 and TNFαR2 blocking Abs also rescued the mrTNFα-induced miR-126 downregulation (Additional file 1: Fig. S10c) and the reduction of the CD31⁺Sca-1^{high} EC fraction (Additional file 1: Fig. S7c).

Consistent with the in vitro results, normal wt mice that were given mrTNFα (1 μg/day, ip injection, 3 weeks) [25, 26] had a significant in vivo reduction of BM EC pri/pre- and mature miR-126 levels (Fig. 4e). As expected, these mice also showed a decrease in CD31⁺Sca-1^{high} ECs and vessels (i.e., arterioles) compared with vehicle-treated controls (Fig. 4f, middle panel; Additional file 1: Fig. S10d, e, middle panel). In vivo co-treatment with miR-126 mimics (20 mg/kg/day, iv, 3 weeks) rescued these changes (Fig. 4f, bottom panel; Additional file 1:

(See figure on next page.)

Fig. 3 EC miR-126 downregulation associates with CD31⁺Sca-1^{high} EC depletion in the BM niche. **a** Representative plots (left) and aggregate results (right) of Sca-1^{low} frequency in cultured Sca-1^{high} ECs upon miR-126 knock-down (KD) by GFP-expressing miRZip anti-miR-126 lentivirus transduction, as analyzed by flow cytometry ($n = 3$). **b** Representative plots (left) and aggregate results (right) of Sca-1^{high} frequency in cultured Sca-1^{low} ECs upon miR-126 over-expression (OE) by GFP-expressing miR-126 precursor lentivirus transduction, as analyzed by flow cytometry ($n = 3$). **c** miR-126 levels in ECs from the BM of wt, *miR-126^{ECΔ/Δ}* (EC miR-126 KO) and *Spred1^{ECΔ/Δ}* (EC miR-126 OE) mice by Q-RT-PCR ($n = 4$ mice per group). **d** and **e** CD31 (FITC) and Sca-1 (PE) IF staining (**d**) and quantification (**e**) of CD31⁺Sca-1^{high} EC-lined vessels (i.e., arterioles) in the tibias from wt, *miR-126^{ECΔ/Δ}* and *Spred1^{ECΔ/Δ}* mice. One of the three independent experiments with similar results is shown. Yellow arrows indicate CD31⁺Sca-1^{high} EC-lined vessels; white arrows indicate CD31⁺Sca-1^{low} EC-lined vessels. **f** and **g** Representative plots (**f**) and aggregate results (**g**) of Sca-1^{high} and Sca-1^{low} subfractions in BM ECs from wt, *miR-126^{ECΔ/Δ}* and *Spred1^{ECΔ/Δ}* mice by flow cytometry analysis ($n = 3$ mice per group). **h** CD31 (FITC) and Sca-1 (PE) IF staining (top) and quantification (bottom) of CD31⁺Sca-1^{high} EC-lined vessels (i.e., arterioles) in the tibias from normal wt mice treated with CpG-scramble (SCR) or CpG-miR-126 inhibitor (miRisten, 20 mg/kg/day, iv, for 3 weeks; $n = 3$ mice per group). Yellow arrows indicate CD31⁺Sca-1^{high} EC lined-vessels; white arrows indicate CD31⁺Sca-1^{low} EC-lined vessels. **i** Representative plots (left) and aggregate results (right) of Sca-1^{high} and Sca-1^{low} subfractions in BM ECs from normal wt mice treated with SCR or miRisten for 3 weeks ($n = 3$ mice per group). Results represent mean \pm SEM. Significance values: * $p < 0.05$; ** $p < 0.01$; *** $p < 0.001$; **** $p < 0.0001$

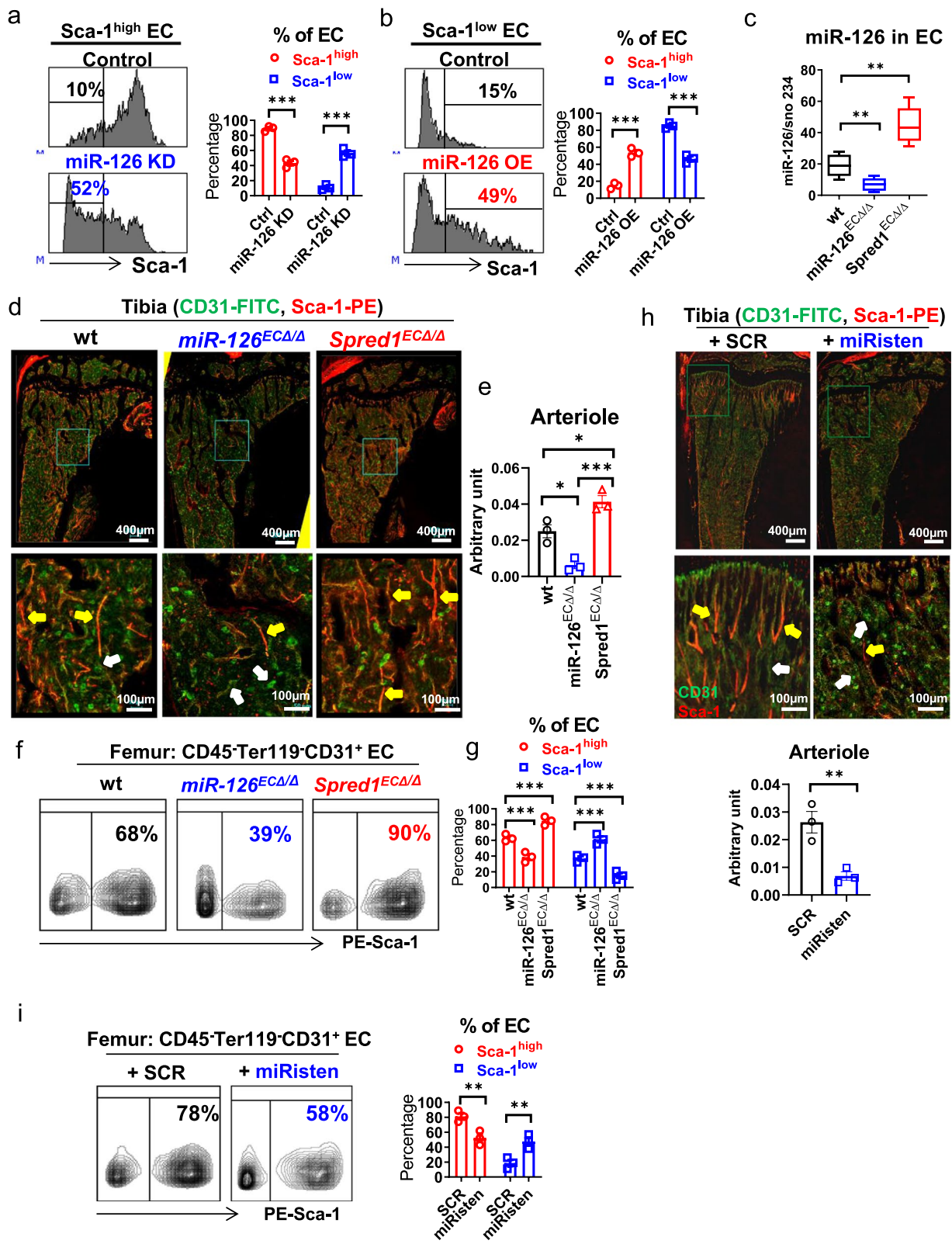


Fig. 3 (See legend on previous page.)

Fig. S10d, e, right panel). Accordingly, normal wt mice engrafted with BM MNCs from *Mll*^{PTD/WT}/*Flt3*^{ITD/ITD} AML donors had higher levels of BM TNF α (Additional file 1: Fig. S7d) and reduced levels of BM EC miR-126 (Additional file 1: Fig. S10f), in addition to a decrease in CD31⁺Sca-1^{high} ECs and arterioles (Fig. 1c, d; Additional file 1: Fig. S2e), compared with mice engrafted with BM MNCs from normal wt donors. These changes were rescued in vivo by blocking TNF α with anti-TNF α Ab (1 mg/day, ip, 4 times/week for 3 weeks) (Additional file 1: Fig. S10g–i). Similar results were observed in NSGS mice engrafted with human FLT3-ITD⁺ AML blasts compared with those engrafted with normal CB CD34⁺ cells (Fig. 1g, h; Additional file 1: Fig. S3, S7e and S10j).

Of note, *Spred1*^{EC Δ/Δ} mice (EC miR-126 OE, Fig. 3c) treated in vivo with mrTNF α (1 μ g/day, ip, 3 weeks) showed no significant difference in vascularization compared with vehicle-treated *Spred1*^{EC Δ/Δ} controls (Additional file 1: Fig. S10k–l). Transplantation of AML BM MNCs resulted in a lesser degree of leukemia-induced BM vascular changes in *Spred1*^{EC Δ/Δ} recipients compared with wt recipients (Fig. 4g, right panel; Additional file 1: Fig. S10m, right panel), suggesting that constitutively higher expression of miR-126, as occurred in ECs from *Spred1*^{EC Δ/Δ} mice, may rescue in vivo TNF α -induced miR-126 depletion and loss of CD31⁺Sca-1^{high} ECs.

While the molecular mechanisms through which TNF α induces endothelial miR-126 downregulation are likely to be multifaceted, we focused on GATA2 since this protein is a verified miR-126 transcription factor [34–36] and is reportedly downregulated by TNF α [34, 37]. We first noticed that *Gata2* levels were reduced in BM ECs from AML mice compared with normal mice (Additional file 1: Fig. S11a) and that GATA2 KD by siRNA in human umbilical vein ECs (HUVECs) decreased miR-126 levels (Additional file 1: Fig. S11b, c). We then demonstrated that in vitro, TNF α treatment (1 ng/ml) reduced *Gata2*

levels in both murine BM ECs and HUVECs (Additional file 1: Fig. S11d–f) as compared with vehicle-treated controls. Using chromatin immunoprecipitation assay, we showed a reduced GATA2 enrichment on the EGFL7/miR-126 promoter [34] in HUVECs exposed to TNF α (Additional file 1: Fig. S11g, h).

Taken altogether, these results support the notion that loss of CD31⁺Sca-1^{high} ECs and associated vessels (i.e., arterioles) observed during AML growth is at least partly mediated by EC miR-126 downregulation via TNF α -dependent decrease of GATA2 transcriptional activity.

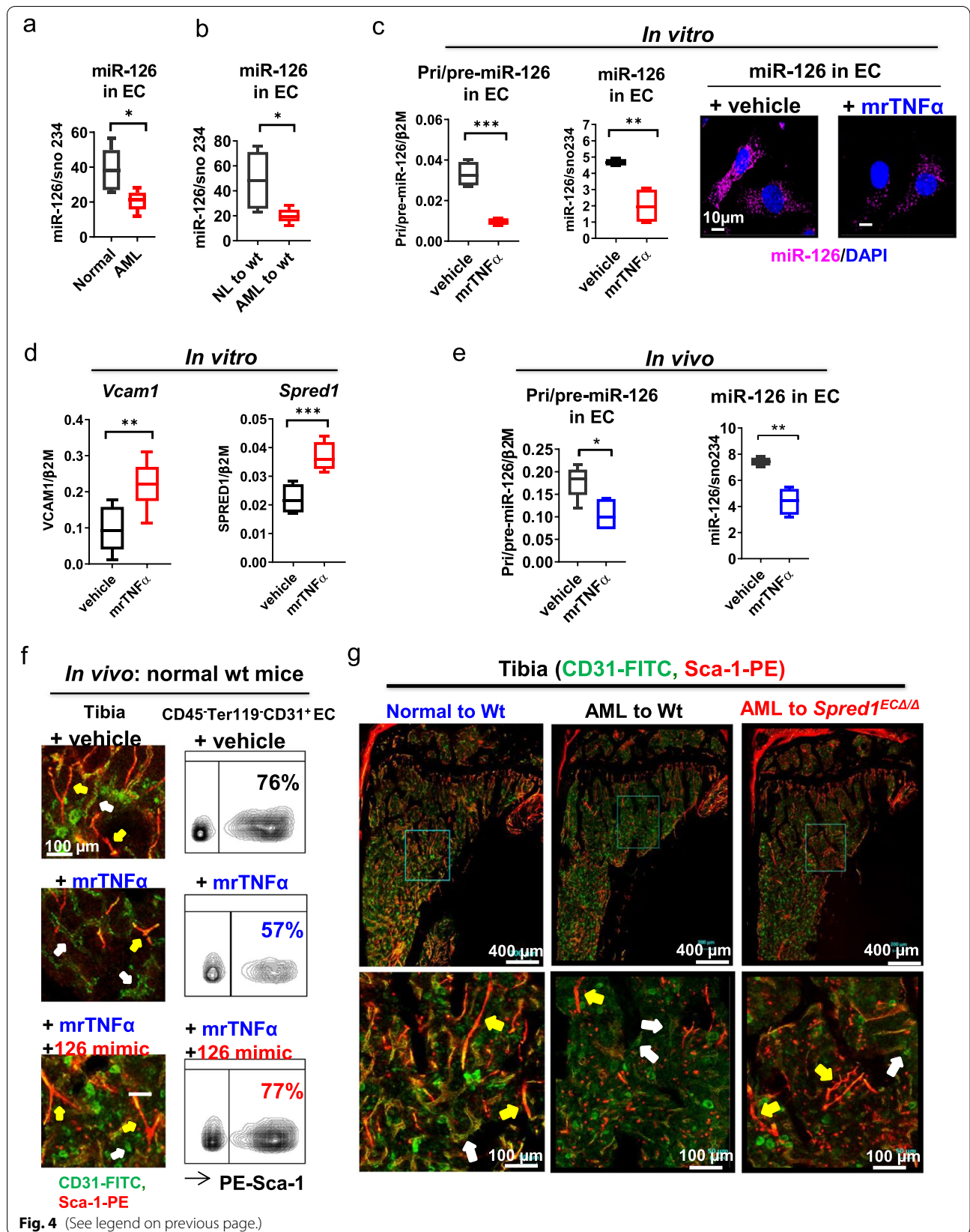
Antileukemic treatment restores CD31⁺Sca-1^{high} vessels that safeguard LSCs

Having demonstrated that TNF α secreted by the AML blasts contributes to loss of CD31⁺Sca-1^{high} ECs, we then reasoned that cytoreductive therapy that eliminates TNF α -secreting blasts could reverse the depletion of CD31⁺Sca-1^{high} EC-lined vessels (i.e., arterioles) as observed in the leukemic BM niche. To this end, we transplanted BM MNCs from *Mll*^{PTD/WT}/*Flt3*^{ITD/ITD} AML mice (CD45.2) into congenic B6 mice (CD45.1) and generated a cohort of AML mice that developed disease at a similar time. We elected to treat these mice with TKIs rather than chemotherapy to restrict the observed BM niche changes to a direct blast cytoreduction rather than to non-specific chemotherapy cytotoxicity to other non-hematopoietic cells.

Upon confirmation of AML development at 4 weeks after transplantation, we treated these mice with the TKI AC220 [38] to target FLT3-ITD and cytoreduce AML blasts (20 mg/kg/day, oral gavage, Fig. 5a). After 3 weeks treatment, we observed leukemic cytoreduction (Fig. 5b) and decreased BM TNF α levels (Fig. 5c) in AC220-treated AML mice compared with vehicle-treated controls. In AC220-treated mice, we noticed a gain in BM CD31⁺Sca-1^{high} ECs and vessels (i.e., arterioles) (Fig. 5d,

(See figure on next page.)

Fig. 4 TNF α induced vascular remodeling of the leukemic BM niche via EC miR-126 downregulation. **a** miR-126 levels in BM ECs from normal wt and *Mll*^{PTD/WT}/*Flt3*^{ITD/ITD} AML mice by Q-RT-PCR ($n = 5$ mice per group). **b** miR-126 levels in BM ECs from wt recipient mice engrafted with BM cells from normal wt or *Mll*^{PTD/WT}/*Flt3*^{ITD/ITD} AML mice by Q-RT-PCR ($n = 5$ mice per group). **c** Levels of pri/pre- and mature miR-126 by Q-RT-PCR ($n = 5$ mice per group; left) and mature miR-126 expression by miRNA staining (right; one of three independent experiments with similar results is shown) in BM ECs from normal wt mice exposed in vitro to mrTNF α (1 ng/ml) or vehicle for 24 h. Scale bars represent a size of 10 μ m. **d** Levels of *Vcam1* and *Spred1* in BM ECs from normal wt mice exposed in vitro to mrTNF α (1 ng/ml) or vehicle for 24 h by Q-RT-PCR ($n = 5$ mice per group). **e** Levels of pri/pre- (left) and mature miR-126 (right), as analyzed by Q-RT-PCR, in BM ECs from normal wt mice treated in vivo with mrTNF α (1 μ g/day, ip, 3 weeks). **f** CD31 (FITC) and Sca-1 (PE) IF staining of tibias (left) and flow cytometry analysis of BM EC Sca-1^{high} and Sca-1^{low} subfractions (right) from normal wt mice treated in vivo with vehicle, mrTNF α (1 μ g/day, ip), or mrTNF α + miR-126 mimics (20 mg/kg/day, iv, 3 weeks; $n = 3$ mice per group). Yellow arrows indicate CD31⁺Sca-1^{high} EC lined-vessels; white arrows indicate CD31⁺Sca-1^{low} EC-lined vessels. Scale bars represent a size of 100 μ m. One of three independent experiments with similar results is shown. **g** CD31 (FITC) and Sca-1 (PE) IF staining of tibias from normal wt recipient mice engrafted with BM MNCs from congenic normal mice (normal to wt) or leukemic mice (AML to wt) and of tibias from normal *Spred1*^{EC Δ/Δ} recipient mice engrafted with BM MNCs from congenic leukemic mice (AML to *Spred1*^{EC Δ/Δ}). Yellow arrows indicate CD31⁺Sca-1^{high} EC lined-vessels; white arrows indicate CD31⁺Sca-1^{low} EC-lined vessels. One of three independent experiments with similar results is shown. Results represent mean \pm SEM. Significance values: * $p < 0.05$; ** $p < 0.01$; **** $p < 0.0001$



e), an increase of Gata2 levels in ECs (Fig. 5f) but not in LSKs (Additional file 1: Fig. S12a), an increase of miR-126 levels in both ECs and LSCs (i.e., AML LSK; Fig. 5g, Additional file 1: Fig. S12b), and a higher frequency of quiescent LSK cells (LSK^{G0}, Fig. 5h; Additional file 1: Fig. S12c) compared with vehicle-treated controls.

In *Mll*^{PTD/WT}/*Flt3*^{ITD/ITD} AML mice, BM LSKs are the subpopulation mostly enriched in leukemia-initiating cells (LICs; hereafter called LSCs) as shown by limiting-dilution transplantation of immunophenotypically defined BM cell subpopulations (Additional file 1: Fig. S12d). To this end, we showed that while AC220 effectively cyto-reduced AML blasts and increased survival of the primary treated mice (Fig. 5i), it also unexpectedly increased LSC burden and/or activity. In fact, in secondary (2nd) transplant experiments, recipients of BM MNCs from AC220-treated donors had a higher disease burden (Additional file 1: Fig. S12e) and shorter survival (Fig. 5j) than recipients of BM MNCs from vehicle-treated donors, indicating not only persistence but also an expansion of LSCs.

In contrast, AC220-treated mice that also received mrTNF α (1 μ g/day, ip, 3 weeks) to prevent the treatment-related TNF α decrease (Fig. 6a) maintained lower levels of BM EC miR-126 (Additional file 1: Fig. S12f) and had fewer CD31⁺Sca-1^{high} ECs and arterioles (Fig. 6b, c) and less LSCs (i.e., CD45.1/CD45.2 AML LSKs; Fig. 6d; Additional file 1: Fig. S12b) than mice that received AC220 alone. In 2nd transplant experiments, the recipients of BM MNCs from AC220+mrTNF α -treated donors had a significantly longer survival compared with the recipients of BM MNCs from AC220-treated donors (Fig. 6e, right; median survival: 84 vs. 24 days, $p < 0.0001$), supporting the hypothesis that prevention of treatment-related CD31⁺Sca-1^{high}

EC enrichment and arteriolar re-vascularization prevents LSC expansion. We confirmed the relevance of these results to human disease using the FLT3-ITD+PDX model (Additional file 1: Fig. S12g–k).

Next, as TNF α acts on the vasculature of the BM niche via miR-126, we reasoned that a direct EC miR-126 deprivation of the BM niche could prevent treatment-induced CD31⁺Sca-1^{high} EC enrichment, arteriolar re-vascularization and LSC protection. To this end, we transplanted BM MNCs from *Mll*^{PTD/WT}/*Flt3*^{ITD/ITD} AML mice into *miR-126*^{ECwt/wt} and *miR-126*^{EC Δ/Δ} recipient mice and treated them with AC220 (20 mg/kg/day, oral gavage; Fig. 6f). After 3 weeks treatment, we observed reduced CD31⁺Sca-1^{high} ECs and arterioles (Additional file 1: Fig. S13a–d), a significant reduction of leukemia burden and LSCs, reduced miR-126 levels in AML LSCs (Fig. 6g) likely due to reduced EC supply, and increased survival (Fig. 6h; left) in the AC220-treated *miR-126*^{EC Δ/Δ} primary mice compared with the AC220-treated *miR-126*^{ECwt/wt} controls. BM MNCs from AC220-treated *miR-126*^{EC Δ/Δ} or *miR-126*^{ECwt/wt} AML donors were then transplanted into 2nd wt recipient mice. Recipients of BM MNCs from the AC220-treated *miR-126*^{EC Δ/Δ} donors had a significantly longer survival than recipients of BM MNCs from the AC220-treated *miR-126*^{ECwt/wt} donors (Fig. 6h, right; median survival: 53 days vs. not reached at day 80 post transplantation, $p < 0.0001$).

Similar results were obtained by pharmacologic miR-126 downregulation with miRisten. A cohort of *Mll*^{PTD/WT}/*Flt3*^{ITD/ITD} leukemic mice were generated as described above and then treated with miRisten (20 mg/kg, iv, daily), SCR, miRisten+ AC220 (10 mg/kg, oral gavage, daily), or SCR+ AC220 for 3 weeks, followed by assessment of donor AML cell engraftment in PB, BM and spleen (Additional file 1:

(See figure on next page.)

Fig. 5 Treatment-induced CD31⁺Sca-1^{high} re-vascularization mediates LSC resistance. **a** Schematic design of the experiments. BM MNCs from diseased *Mll*^{PTD/WT}/*Flt3*^{ITD/ITD} mouse (CD45.1/CD45.2) were transplanted into normal wt recipient mice (CD45.1, 6 Gy) to generate a cohort of leukemic mice with a similar disease onset time. At day 14 post transplantation, the mice were treated with AC220 (20 mg/kg/day, oral gavage) or vehicle for 3 weeks. After completion of treatment, a cohort of treated mice ($n = 10$ mice per group) were monitored for survival and another cohort of mice ($n = 9$ mice per group) were euthanized and assessed for BM vascular changes and LSC burden by 2nd transplantation. **b** Frequency and number of AML cells in BM and spleen from AC220-treated versus vehicle-treated AML mice. **c** TNF α mRNA expression in BM MNCs by Q-RT-PCR (left) and TNF α protein concentrations in BM plasma by Luminex assay (right) in AC220-treated versus vehicle-treated AML mice. **d** and **e** Long bones (femurs and tibias) from AML mice treated with vehicle or AC220 for 3 weeks were evaluated for: BM EC Sca-1^{high} and Sca-1^{low} subfractions (**d** left, representative plots; right, aggregate results) by flow cytometry analysis ($n = 4$ mice per group), and CD31⁺Sca-1^{high} EC-lined vessels (i.e., arterioles) by CD31 (FITC) and Sca-1 (PE) IF staining (**e** left) and quantification (**e** right) ($n = 3$ mice per group). For **e**: Yellow arrows indicate CD31⁺Sca-1^{high} EC-lined vessels; white arrows indicate CD31⁺Sca-1^{low} EC-lined vessels; scale bars represent a size of 50 μ m. **f** Gata2 levels in BM ECs from AML mice treated with AC220 or vehicle for 3 weeks, analyzed by Q-RT-PCR ($n = 4$ mice per group). **g** miR-126 levels in BM ECs (left) and LSKs (right) from AML mice treated with vehicle or AC220 for 3 weeks, analyzed by Q-RT-PCR. **h** Representative plots of cell cycling of BM LSKs (left) and frequency of quiescent BM LSKs (i.e., LSKs in G0 phase, LSK^{G0}, right) from AML mice treated with vehicle or AC220 for 3 weeks, analyzed by Ki-67 and DAPI staining and flow cytometry analysis. **i** and **j** Survival of AML mice treated with vehicle or AC220 for 3 weeks (primary, **i**) and survival of 2nd recipient mice (2nd survival, **j**) receiving BM cells from AC220-treated or vehicle-treated AML donors. Two of three independent experiments with similar results were shown. Results represent mean \pm SEM. Significance values: * $p < 0.05$; ** $p < 0.01$; *** $p < 0.001$; **** $p < 0.0001$

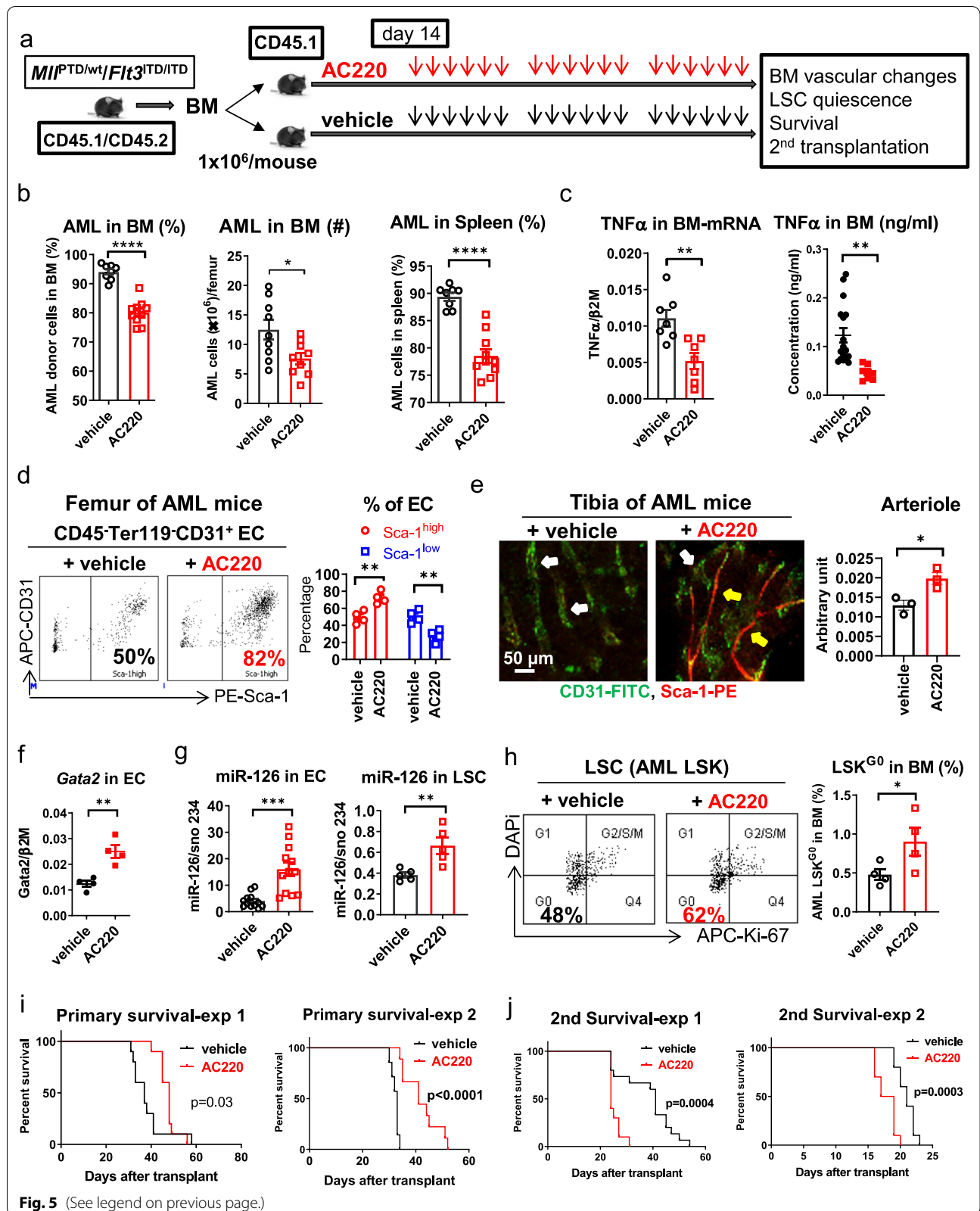


Fig. S14a). We confirmed miR-126 KD in ECs from miRisten-treated mice compared with SCR-treated mice (Additional file 1: Fig. S14b). Mice receiving the combination of miRisten+ AC220 had a significant reduction in the percentage of AML cells in PB, BM and spleen (Additional file 1: Fig. S14c, d), a significant decrease in the frequency of BM AML LSKs (Additional file 1: Fig. S14e) and increased survival (Additional file 1: Fig. S14f) compared to mice treated with SCR+ AC220. Similar to the mrTNF α + AC220 combination, the miRisten+ AC220 combination also significantly prolonged survival in 2nd transplant experiments (Additional file 1: Fig. S14g; median survival: 37 days vs. not reached at day 65 post transplantation, $p < 0.0001$), suggesting reduced post-treatment LSC burden.

These results were corroborated in NSGS mice transplanted with FLT3-ITD+ AML blasts and then treated with miRisten+ AC220 or SCR+ AC220 for 3 weeks (Additional file 1: Fig. S15a). Treatment with miRisten+ AC220 significantly reduced human CD45⁺CD33⁺ cell engraftment (Additional file 1: Fig. S15b) and prolonged survival (Additional file 1: Fig. S15c, left) in the primary treated mice. Recipient mice receiving BM cells from miRisten+ AC220-treated donors lived significantly longer than the mice receiving BM cells from SCR+ AC220-treated donors (Additional file 1: Fig. S15c, right; median survival: 167 vs. 126 days, $p < 0.0001$), suggesting that the combination of miRisten+ AC220 had decreased the LSC burden.

Discussion

AML cells reportedly produce inflammatory cytokines that profoundly remodel the BM vascular niche and create a microenvironment supportive of competitive leukemia growth over normal hematopoiesis [31, 39, 40]. However, how the leukemic BM niche adapts to the changing conditions caused by treatment and ultimately impacts on clinical outcome remains to be fully elucidated. Herein, we utilized FLT3-ITD+ AML murine and PDX models to study the vascular changes of the leukemic BM niche that occur upon molecular targeting of the AML blasts. During AML growth, in the leukemic BM niche, we observed a loss in CD31⁺Sca-1^{high} ECs, which line mainly non-permeable arterioles, and a gain in CD31⁺Sca-1^{low} ECs, which line mainly fenestrated, permeable sinusoids. These vascular changes were caused partly by high levels of TNF α produced by the AML blasts, causing downregulation of miR-126 in CD31⁺Sca-1^{high} ECs, which became depleted while an enrichment in CD31⁺Sca-1^{low} ECs was observed.

TNF α has been intensively studied for its role in normal and malignant hematopoiesis [41]. Yamashita and Passegue recently reported on the complex role of TNF α in normal and clonal hematopoiesis, showing that while inducing myeloid progenitor apoptosis, TNF α promotes HSC survival [42]. AML blasts express high levels of TNF α [43], and likely hijack TNF α -driven mechanisms of normal hematopoiesis to support leukemia growth [42]. Herein, we show a novel pro-leukemogenic role of TNF α that is extrinsic to AML cells and involves downregulation of miR-126 in the vascular compartment of the BM niche. While TNF α has been implicated in the remodeling of blood vessels and shown to promote angiogenesis during inflammation [44, 45], to our knowledge the

(See figure on next page.)

Fig. 6 Preventing treatment-induced CD31⁺Sca-1^{high} re-vascularization enhances LSC sensitivity to TKI. **a** Schematic design of the experiments. BM MNCs from diseased *Mll^{ITD/wt}/Flt3^{ITD/ITD}* AML mice (CD45.1/CD45.2) were transplanted into normal wt recipient mice (CD45.1, 6 Gy) to generate a cohort of mice with a similar disease onset time. At day 14 post transplantation, the leukemic mice were treated with AC220 (20 mg/kg/day, oral gavage)+ mrTNF α (1 μ g/day, ip) or AC220+ vehicle for 3 weeks. After completion of treatment, a cohort of treated mice ($n = 12$ mice per group) were monitored for survival and another cohort of mice ($n = 7$ mice per group) were euthanized and assessed for BM vascular changes and LSC burden by 2nd transplantation. **b** and **c** Long bones (femurs and tibias) from the above leukemic mice treated with AC220+ mrTNF α or AC220+ vehicle for 3 weeks ($n = 3$ mice per group) were evaluated for: BM EC Sca-1^{high} and Sca-1^{low} subfractions (**b** left, representative plots; right, aggregate results) by flow cytometry analysis, and CD31⁺Sca-1^{high} EC-lined vessels (i.e., arterioles) by CD31 (FITC) and Sca-1 (PE) IF staining (**c** left) and quantification (**c**, right). For **c**: Yellow arrows indicate CD31⁺Sca-1^{high} EC-lined vessels; white arrows indicate CD31⁺Sca-1^{low} EC-lined vessels; scale bars represent a size of 50 μ m. **d** Representative plots (left) and aggregate results of frequency and number of LSCs (i.e., CD45.1/CD45.2 LSKs, middle), and ratio of LSCs/HSCs (i.e., CD45.1/CD45.2 AML LSKs: CD45.1 normal LSKs, right) in the BM from AC220+ mrTNF α -treated and AC220+ vehicle-treated leukemic mice. **e** Survival of treated primary AML mice (left) and 2nd recipient mice (right) receiving BM cells from AC220+ mrTNF α -treated or AC220+ vehicle-treated AML donors. **f** Schematic design of the experiments. BM MNCs from diseased *Mll^{ITD/wt}/Flt3^{ITD/ITD}* mice (CD45.1/CD45.2) were transplanted into wt and EC miR-126 KO (*miR-126^{EC Δ/Δ}*) recipient mice (CD45.2, 6 Gy) and evaluated for response to AC220 (20 mg/kg/day, oral gavage) given for 3 weeks. **g** Circulating leukemia burden (left) and frequency of BM LSCs (CD45.1/CD45.2 LSKs, middle) by flow cytometry analysis and miR-126 levels in LSCs by Q-RT-PCR (right) from leukemic miR-126 wt and *miR-126^{EC Δ/Δ}* mice treated with AC220 for 3 weeks. **h** Survival of AC220-treated leukemic miR-126 wt and *miR-126^{EC Δ/Δ}* primary mice (left) and 2nd recipients (right, $n = 10$ mice per group) of BM cells from the AC220-treated leukemic miR-126 wt and *miR-126^{EC Δ/Δ}* mice. Results represent mean \pm SEM. Significance values: * $p < 0.05$; ** $p < 0.01$; *** $p < 0.001$; **** $p < 0.0001$

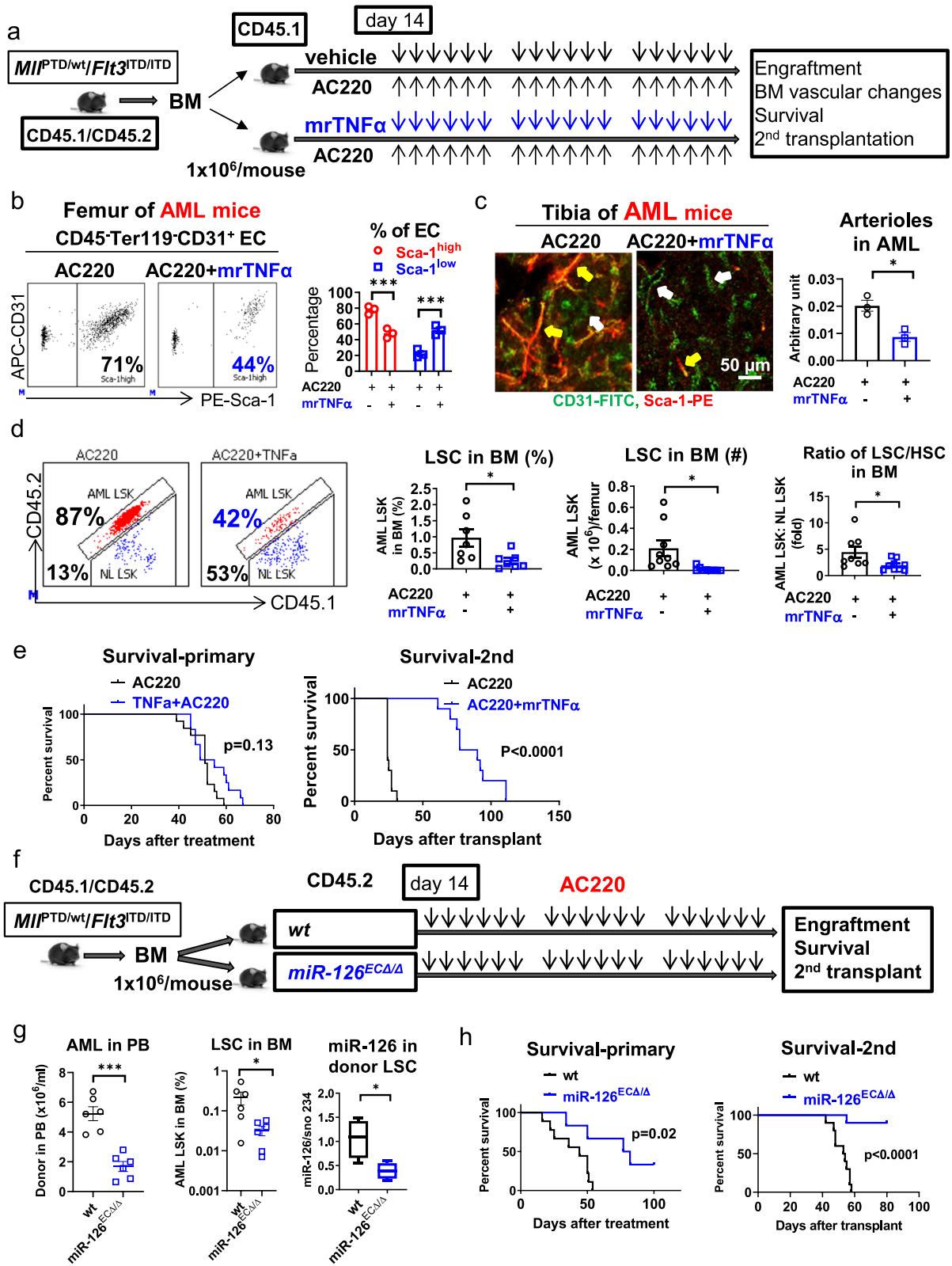


Fig. 6 (See legend on previous page.)

TNF α -induced switch from Sca-1^{high} ECs to Sca-1^{low} ECs, and in turn from an arteriole- to a sinusoid-enriched BM niche as observed during leukemia growth has not been previously reported. As these changes were a phenocopy of genetic (EC miR-126 KO) and pharmacologic (i.e., miRisten) EC miR-126 deprivation, we postulated and proved that loss of CD31⁺Sca-1^{high} ECs and arterioles were due to TNF α -induced miR-126 downregulation.

MiR-126 is one of the most highly expressed microRNAs in ECs, where it acts as a master regulator of angiogenesis [12, 28, 29]. In developmental vasculogenesis, miR-126 supports differentiation of embryonic stem cells into endothelial precursor cells and mature ECs [46]. In mature ECs, miR-126 contributes to the maintenance of quiescence and vascular integrity and inhibition of endothelial permeability and apoptosis [12, 28, 29]. Furthermore, miR-126 enhances the activity of angiopoietin-1 (Ang-1), a glycoprotein that regulates vessel stabilization, maturation and permeability [47, 48]. Of note, the molecular mechanisms through which TNF α induces endothelial miR-126 downregulation are likely to be multifaceted and remain to be fully elucidated. Herein, we showed that they likely involve GATA2 [34, 35], a miR-126 transcription factor, which is reportedly silenced by TNF α [37]. But how do the TNF α -induced vascular changes in the leukemic BM niche ultimately promote leukemia growth? We previously showed that CD31⁺Sca-1^{high} ECs expressed the highest levels of miR-126 in the BM niche and supply miR-126 to maintain LSC quiescence [31]. Thus, by inducing loss of CD31⁺Sca-1^{high} ECs, TNF α decreases the endothelial supply of miR-126 to LSCs and enables them to enter the cell cycle and partially differentiate into proliferating “bulk” AML blasts [31, 49].

Of note, these observations may have direct translational and clinical relevance. In fact, under these conditions, therapeutic cytoreduction of AML blasts can cause a drop in the BM levels of TNF α and in turn lead to a post-treatment enrichment of BM CD31⁺Sca-1^{high} ECs and arterioles with a consequent increase in the endothelial miR-126 supply to LSCs, which, once enriched in miR-126, are more resistant to therapy [31, 49]. We proved this model in FLT3-ITD+ AML murine and PDX mice treated with TKIs. We showed that after TKI treatment, an increase in CD31⁺Sca-1^{high} ECs and arterioles occurred and LSCs persisted as demonstrated using secondary transplant experiments. Of note, LSC persistence could be prevented by blocking the gain in CD31⁺Sca-1^{high} ECs and the arteriolar “re-vascularization” of the BM niche with administration of recombinant TNF α or with deprivation of endothelial miR-126 via genetic EC miR-126 KO or pharmacological treatment with the anti-miR-126 miRisten.

In comparing our results with recent reports on the BM vascular changes occurring during AML growth and treatment, we found interesting similarities between these studies and our work [17, 39]. While Passaro et al. showed that engraftment of AML blasts in mouse BM increased CD31⁺Sca-1⁺ ECs [17], in line with our results, Duarte et al. reported that AML growth caused loss of CD31⁺Sca-1⁺ ECs in the BM niche [39]. Similar to our observation, both studies demonstrated an increase in BM vascular permeability during leukemia growth, which associates with CD31⁺Sca-1^{low} vessels. While these studies showed that the post-treatment changes rescued AML-induced BM permeability and enhanced sensitivity of the proliferating blasts to chemotherapy, they did not test the effects of these changes on LSC activity as done in our study. To our knowledge, we are the first to show that, in the BM niche, therapeutic cytoreduction of proliferating blasts decreases TNF α levels and leads to enrichment in CD31⁺Sca-1^{high} arterioles that safeguard LSCs. Of note, using PDX model transplanted with human FLT3-ITD+ AML cells, Maifrede et al. showed that AC220 (10 mg/kg/day, 7 days) prolonged survival of primary treated mice, but did not change survival of 2nd recipient mice [50]. Herein, using FLT3-ITD+ AML murine model, we showed that, treatment with AC220 (20 mg/kg/day, 21 days) prolonged survival of primary treated mice and resulted in a more severe disease in 2nd recipient mice (i.e., shorter survival). These results are not in conflict as in both studies, TKI treatment failed to reduce LSC burden. The difference in survival of secondary transplanted mice observed in these two studies could be related to technical differences including the used models and the schedule (7 vs. 21 days) and dosage (10 vs. 20 mg/kg/day) of the drug administration.

Thus, taken altogether, these results provide the evidence for non-genetic, LSC extrinsic mechanisms of treatment resistance that depend on the vascular plasticity of the leukemic BM niche and likely exemplify a treatment-related Janus phenomenon in AML [51]. Janus was an ancient Roman god with two faces looking in opposite directions. The two opposing “faces” of the TKI treatments in FLT3-ITD+ AML models as described here are the initially beneficial cytoreduction of proliferating blasts followed by post-treatment CD31⁺Sca-1^{high} EC gain and arteriolar re-vascularization of the BM niche that safeguard LSCs thereby creating the condition for disease relapse. Of note, it is likely that the “Janus” phenomenon that we report here for TKIs may also apply to other antileukemic therapies that target proliferating blasts but do not kill LSCs. To this end, prevention of post-treatment CD31⁺Sca-1^{high} EC expansion, arteriolar re-vascularization and LSC protection is achievable with pharmacological deprivation of BM endothelial miR-126

(i.e., miRisten), which may represent a novel strategy to overcome non-genetically driven, extrinsic mechanisms of LSC resistance in AML.

Conclusions

The TNF α -miR-126 axis plays a key role in the BM vascular changes induced by antileukemic treatments and mediates non-genetic, extrinsic mechanisms of LSC treatment-resistance that can be overcome with preemptive therapeutic deprivation of EC miR-126.

Abbreviations

AML: Acute myeloid leukemia; BM: Bone marrow; HSC: Hematopoietic stem cell; LSC: Leukemic stem cell; EC: Endothelial cell; TNF α : Tumor necrosis factor alpha; PB: Peripheral blood; MNC: Mononuclear cell; COHNMC: City of Hope National Medical Center; FLT3: FMS-like tyrosine kinase 3; ITD: Internal tandem duplication; TK: Tyrosine kinase; TKI: Tyrosine kinase inhibitor; wt: Wild type; CB: Cord blood; PDX: Patient-derived xenograft; L⁻S⁻K⁻: Lin⁻Sca-1⁻c-Kit⁻; LSK: Lin⁻Sca-1⁺c-Kit⁺; LT-HSC: Long-term hematopoietic stem cell; mr: Murine recombinant; Ab: Antibody; OB: Osteoblast; MSP: Mesenchymal stromal progenitor; KO: Knockout; KD: Knock-down; HUVEC: Human umbilical vein endothelial cells; 2nd: Secondary; Ang-1: Angiopoietin-1.

Supplementary Information

The online version contains supplementary material available at <https://doi.org/10.1186/s13045-021-01133-y>.

Additional file 1. Treatment-induced Arteriolar Revascularization and miR-126 Enhancement in Bone Marrow Niche Protect Leukemic Stem Cells in AML.

Acknowledgements

We are grateful to Marjorie Robbins and David Alexander for editing the manuscript. We acknowledge the support of the Animal Resources Center, Analytical Cytometry, Pathology (Hematopoietic Tissue Biorepository), Bioinformatics, Light Microscopy, Integrative Genomics and DNA/RNA Cores at City of Hope Comprehensive Cancer Center supported by the National Cancer Institute of the National Institutes of Health under award number P30CA33572. We are grateful to COH Comprehensive Cancer Center, the patients and their physicians for providing primary patient material for this study.

Authors' contributions

BZ designed and conducted experiments, analyzed data, wrote the manuscript and provided administrative support; LXN and DZ designed and conducted experiments and analyzed data; DF analyzed RNA-sequencing data; HW, DH, JQ, CA, MB, and Y-LS conducted experiments; AS and LG provided patient samples; AD, DP, ZC, AH, FP, JJ, TJT, MC, LL, RCR, NC and Y-HK reviewed data and the manuscript; YF and YZ provided Tie2-CreER/TdTomato mouse and reviewed the manuscript; CJK provided miR-126^{fllox/fllox} mouse and reviewed the manuscript; AY provided Spred1^{fllox/fllox} mouse and reviewed the manuscript; MK designed the CpG-miR-126 inhibitor and CpG-miR-126 mimics, reviewed data and the manuscript; GM designed experiments, analyzed data, wrote manuscript and provided administrative support. All authors read and approved the final manuscript.

Funding

This work was supported in part by National Cancer Institute grants: CA248475 (GM/BZ), CA205247 (YHK/GM), CA201184 (GM), CA25004467 (RCR/YHK/GM), CA213131 (MK), T32CA221709-02 (DF), the Gehr Family Foundation (GM), the George Hoag Family Foundation (GM), National Natural Science Foundation of China (No. 81800146, HW).

Availability of data and materials

RNA sequencing data produced in our laboratory and analysed in this study are available at the Gene Expression Omnibus (GEO) repository of the National Center for Biotechnology Information (GSE180104). Supplementary information including Additional file 1: Figs. S1–S15 and Tables S1–S3 are provided with the online version of this paper. All other datasets generated during this study are available from the corresponding author on reasonable request.

Declarations

Ethics approval and consent to participate

Patient sample acquisition was approved by the Institutional Review Boards (IRB) at the COHNMC, in accordance with an assurance filed with and approved by the Department of Health and Human Services and met all requirements of the Declaration of Helsinki. CML patients were consented on the IRB #18067 protocol.

Consent for publication

Not applicable.

Competing interests

The authors declare that they have no competing interests.

Author details

¹Department of Hematological Malignancies Translational Science, Gehr Family Center for Leukemia Research, City of Hope Medical Center and Beckman Research Institute, 1500 E Duarte Road, Duarte, CA 91010, USA. ²Department of Population Science, City of Hope, Duarte, CA, USA. ³Department of Hematology, The First Affiliated Hospital, College of Medicine, Zhejiang University, Hangzhou, Zhejiang, People's Republic of China. ⁴Department of Pathology, The First Affiliated Hospital, Sun Yat-Sen University, Guangzhou, Guangdong, People's Republic of China. ⁵Department of Molecular Medicine, City of Hope, Duarte, CA, USA. ⁶Department of Immuno-Oncology, City of Hope, Duarte, CA, USA. ⁷Division of Experimental Hematology and Cancer Biology, Children's Hospital Medical Center, Cincinnati, OH, USA. ⁸The Ohio State University, Columbus, OH, USA. ⁹University of Maryland, Baltimore, MD, USA. ¹⁰Department of Diabetes Complications and Metabolism, City of Hope, Duarte, CA, USA. ¹¹Department of Medicine, Division of Hematology, Stanford University, Stanford, CA, USA. ¹²Department of Microbiology and Immunology, Keio University School of Medicine, Tokyo, Japan. ¹³Division of Mathematical Oncology, Department of Computational and Quantitative Medicine, Beckman Research Institute, City of Hope Medical Center, Duarte, CA, USA.

Received: 29 April 2021 Accepted: 31 July 2021

Published online: 09 August 2021

References

1. Khwaja A, Bjorkholm M, Gale RE, Levine RL, Jordan CT, Ehninger G, et al. Acute myeloid leukaemia. *Nat Rev Dis Primers*. 2016;2:16010.
2. SEER Cancer Statistics Review (CSR) 1975–2017, updated April, 2020 [Internet]. National Cancer Institute, DCCPS, Surveillance Research Program, Surveillance Systems Branch. 2020. Available from: <https://seer.cancer.gov/>.
3. Bonnet D, Dick JE. Human acute myeloid leukemia is organized as a hierarchy that originates from a primitive hematopoietic cell. *Nat Med*. 1997;3(7):730–7.
4. Dick JE. Acute myeloid leukemia stem cells. *Ann NY Acad Sci*. 2005;1044:1–5.
5. Shafat MS, Gnanaswaran B, Bowles KM, Rushworth SA. The bone marrow microenvironment—home of the leukemic blasts. *Blood Rev*. 2017;31(5):277–86.
6. Mendez-Ferrer S, Bonnet D, Steensma DP, Hasserjian RP, Ghibrial IM, Gribben JG, et al. Bone marrow niches in haematological malignancies. *Nat Rev Cancer*. 2020;20(5):285–98.
7. Zhang B, Ho YW, Huang Q, Maeda T, Lin A, Lee SU, et al. Altered microenvironmental regulation of leukemic and normal stem cells in chronic myelogenous leukemia. *Cancer Cell*. 2012;21(4):577–92.

8. Marine JC, Dawson SJ, Dawson MA. Non-genetic mechanisms of therapeutic resistance in cancer. *Nat Rev Cancer*. 2020;20(12):743–56.
9. Dohner H, Estey E, Grimwade D, Amadori S, Appelbaum FR, Buchner T, et al. Diagnosis and management of AML in adults: 2017 ELN recommendations from an international expert panel. *Blood*. 2017;129(4):424–47.
10. Stone RM, Mandrekar SJ, Sanford BL, Laumann K, Geyer S, Bloomfield CD, et al. Midostaurin plus chemotherapy for acute myeloid leukemia with a FLT3 mutation. *N Engl J Med*. 2017;377(5):454–64.
11. Zorko NA, Bernot KM, Whitman SP, Siebenaler RF, Ahmed EH, Marcucci GG, et al. Mll partial tandem duplication and Flt3 internal tandem duplication in a double knock-in mouse recapitulates features of counterpart human acute myeloid leukemias. *Blood*. 2012;120(5):1130–6.
12. Kuhnert F, Mancuso MR, Hampton J, Stankunas K, Asano T, Chen CZ, et al. Attribution of vascular phenotypes of the murine Eglf7 locus to the microRNA miR-126. *Development*. 2008;135(24):3989–93.
13. Inoue H, Kato R, Fukuyama S, Nonami A, Taniguchi K, Matsumoto K, et al. Spred-1 negatively regulates allergen-induced airway eosinophilia and hyperresponsiveness. *J Exp Med*. 2005;201(1):73–82.
14. Hochstetler CL, Feng Y, Sacma M, Davis AK, Rao M, Kuan CY, et al. KRas(G12D) expression in the bone marrow vascular niche affects hematopoiesis with inflammatory signals. *Exp Hematol*. 2019;79:3–15.
15. Feng Y, Liu M, Guo F, Liu W, Sampson L, You L-R, et al. Novel method to study mouse bone marrow endothelial cells in vivo and in vitro. *Blood*. 2012;120(21):617.
16. Kusumbe AP, Ramasamy SK, Starsichova A, Adams RH. Sample preparation for high-resolution 3D confocal imaging of mouse skeletal tissue. *Nat Protoc*. 2015;10(12):1904–14.
17. Passaro D, Di Tullio A, Abarrategi A, Rouault-Pierre K, Foster K, Ariza-McNaughton L, et al. Increased vascular permeability in the bone marrow microenvironment contributes to disease progression and drug response in acute myeloid leukemia. *Cancer Cell*. 2017;32(3):324–41.
18. Hooper AT, Butler JM, Nolan DJ, Kranz A, Iida K, Kobayashi M, et al. Engraftment and reconstitution of hematopoiesis is dependent on VEGFR2-mediated regeneration of sinusoidal endothelial cells. *Cell Stem Cell*. 2009;4(3):263–74.
19. Kunisaki Y, Bruns I, Scheiermann C, Ahmed J, Pinho S, Zhang D, et al. Arteriolar niches maintain haematopoietic stem cell quiescence. *Nature*. 2013;502(7473):637–43.
20. Kusumbe AP, Ramasamy SK, Adams RH. Coupling of angiogenesis and osteogenesis by a specific vessel subtype in bone. *Nature*. 2014;507(7492):323–8.
21. Ramasamy SK. Structure and functions of blood vessels and vascular niches in bone. *Stem Cells Int*. 2017;2017:5046953.
22. Itkin T, Gur-Cohen S, Spencer JA, Schajnovitz A, Ramasamy SK, Kusumbe AP, et al. Distinct bone marrow blood vessels differentially regulate hematopoiesis. *Nature*. 2016;532(7599):323–8.
23. Egawa G, Nakamizo S, Natsuaki Y, Doi H, Miyachi Y, Kabashima K. Intravital analysis of vascular permeability in mice using two-photon microscopy. *Sci Rep*. 2013;3:1932.
24. Fukumura D, Jain RK. Imaging angiogenesis and the microenvironment. *APMIS*. 2008;116(7–8):695–715.
25. Biesmans S, Bouwknicht JA, Ver Donck L, Langlois X, Acton PD, De Haes P, et al. Peripheral administration of tumor necrosis factor- α induces neuroinflammation and sickness but not depressive-like behavior in mice. *Biomed Res Int*. 2015;2015:716920.
26. Lee LF, Lih CJ, Huang CJ, Cao T, Cohen SN, McDevitt HO. Genomic expression profiling of TNF- α -treated BDC2.5 diabetogenic CD4+ T cells. *Proc Natl Acad Sci USA*. 2008;105(29):10107–12.
27. Via CS, Shustov A, Rus V, Lang T, Nguyen P, Finkelman FD. In vivo neutralization of TNF- α promotes humoral autoimmunity by preventing the induction of CTL. *J Immunol*. 2001;167(12):6821–6.
28. Wang S, Aurora AB, Johnson BA, Qi X, McAnally J, Hill JA, et al. The endothelial-specific microRNA miR-126 governs vascular integrity and angiogenesis. *Dev Cell*. 2008;15(2):261–71.
29. Fish JE, Santoro MM, Morton SU, Yu S, Yeh RF, Wythe JD, et al. miR-126 regulates angiogenic signaling and vascular integrity. *Dev Cell*. 2008;15(2):272–84.
30. Hu X, Garcia M, Weng L, Jung X, Murakami JL, Kumar B, et al. Identification of a common mesenchymal stromal progenitor for the adult haematopoietic niche. *Nat Commun*. 2016;7:13095.
31. Zhang B, Nguyen LXT, Li L, Zhao D, Kumar B, Wu H, et al. Bone marrow niche trafficking of miR-126 controls the self-renewal of leukemia stem cells in chronic myelogenous leukemia. *Nat Med*. 2018;24(4):450–62.
32. Ishizaki T, Tamiya T, Taniguchi K, Morita R, Kato R, Okamoto F, et al. miR126 positively regulates mast cell proliferation and cytokine production through suppressing Spred1. *Genes Cells*. 2011;16(7):803–14.
33. Tadokoro Y, Hoshii T, Yamazaki S, Eto K, Ema H, Kobayashi M, et al. Spred1 safeguards hematopoietic homeostasis against diet-induced systemic stress. *Cell Stem Cell*. 2018;22(5):713–25.
34. Hartmann D, Fiedler J, Sonnenschein K, Just A, Pfanne A, Zimmer K, et al. MicroRNA-based therapy of GATA2-deficient vascular disease. *Circulation*. 2016;134(24):1973–90.
35. Le Bras A, Samson C, Trentini M, Caetano B, Lelievre E, Mattot V, et al. VE-statin/egfl7 expression in endothelial cells is regulated by a distal enhancer and a proximal promoter under the direct control of Erg and GATA-2. *PLoS ONE*. 2010;5(8):e12156.
36. Mahamud MR, Geng X, Ho YC, Cha B, Kim Y, Ma J, et al. GATA2 controls lymphatic endothelial cell junctional integrity and lymphovenous valve morphogenesis through miR-126. *Development*. 2019;146(21):1039.
37. Chan YC, Roy S, Khanna S, Sen CK. Downregulation of endothelial microRNA-200b supports cutaneous wound angiogenesis by desilencing GATA binding protein 2 and vascular endothelial growth factor receptor 2. *Arterioscler Thromb Vasc Biol*. 2012;32(6):1372–82.
38. Zarrinkar PP, Gunawardane RN, Cramer MD, Gardner MF, Brigham D, Belli B, et al. AC220 is a uniquely potent and selective inhibitor of FLT3 for the treatment of acute myeloid leukemia (AML). *Blood*. 2009;114(14):2984–92.
39. Duarte D, Hawkins ED, Akinduro O, Ang H, De Filippo K, Kong IY, et al. Inhibition of endosteal vascular niche remodeling rescues hematopoietic stem cell loss in AML. *Cell Stem Cell*. 2018;22(1):64–77.
40. Batsivari A, Haltalli MLR, Passaro D, Pospori C, Lo Celso C, Bonnet D. Dynamic responses of the haematopoietic stem cell niche to diverse stresses. *Nat Cell Biol*. 2020;22(1):7–17.
41. Silke J, Hartland EL. Masters, marionettes and modulators: intersection of pathogen virulence factors and mammalian death receptor signaling. *Curr Opin Immunol*. 2013;25(4):436–40.
42. Yamashita M, Passegue E. TNF- α coordinates hematopoietic stem cell survival and myeloid regeneration. *Cell Stem Cell*. 2019;25(3):357–72.
43. Kovtonyuk LV, Fritsch K, Feng X, Manz MG, Takizawa H. Inflamm-aging of hematopoiesis, hematopoietic stem cells, and the bone marrow microenvironment. *Front Immunol*. 2016;7:502.
44. Baluk P, Yao LC, Feng J, Romano T, Jung SS, Schreiter JL, et al. TNF- α drives remodeling of blood vessels and lymphatics in sustained airway inflammation in mice. *J Clin Invest*. 2009;119(10):2954–64.
45. Chen JX, Chen Y, DeBusk L, Lin W, Lin PC. Dual functional roles of Tie-2/angiopoietin in TNF- α -mediated angiogenesis. *Am J Physiol Heart Circ Physiol*. 2004;287(1):H187–95.
46. Chistiakov DA, Orekhov AN, Bobryshev YV. The role of miR-126 in embryonic angiogenesis, adult vascular homeostasis, and vascular repair and its alterations in atherosclerotic disease. *J Mol Cell Cardiol*. 2016;97:47–55.
47. Sessa R, Seano G, di Blasio L, Gagliardi PA, Isella C, Medico E, et al. The miR-126 regulates angiopoietin-1 signaling and vessel maturation by targeting p85 β . *Biochim Biophys Acta*. 2012;1823(10):1925–35.
48. Pizurki L, Zhou Z, Glynos K, Roussos C, Papapetropoulos A. Angiopoietin-1 inhibits endothelial permeability, neutrophil adherence and IL-8 production. *Br J Pharmacol*. 2003;139(2):329–36.
49. Lechman ER, Gentner B, Ng SW, Schoof EM, van Galen P, Kennedy JA, et al. miR-126 regulates distinct self-renewal outcomes in normal and malignant hematopoietic stem cells. *Cancer Cell*. 2016;29(2):214–28.

50. Maifrede S, Nieborowska-Skorska M, Sullivan-Reed K, Dasgupta Y, Podszywalow-Bartnicka P, Le BV, et al. Tyrosine kinase inhibitor-induced defects in DNA repair sensitize FLT3(ITD)-positive leukemia cells to PARP1 inhibitors. *Blood*. 2018;132(1):67–77.
51. Epstein SE, Stabile E, Kinnaird T, Lee CW, Clavijo L, Burnett MS. Janus phenomenon: the interrelated tradeoffs inherent in therapies designed to enhance collateral formation and those designed to inhibit atherogenesis. *Circulation*. 2004;109(23):2826–31.

Publisher's Note

Springer Nature remains neutral with regard to jurisdictional claims in published maps and institutional affiliations.

Ready to submit your research? Choose BMC and benefit from:

- fast, convenient online submission
- thorough peer review by experienced researchers in your field
- rapid publication on acceptance
- support for research data, including large and complex data types
- gold Open Access which fosters wider collaboration and increased citations
- maximum visibility for your research: over 100M website views per year

At BMC, research is always in progress.

Learn more biomedcentral.com/submissions

